



Addition Series Floor Plans

*Great Room • Master Bed / Bath Suite
Kitchen / Dining • Mother-In-Law Suite*

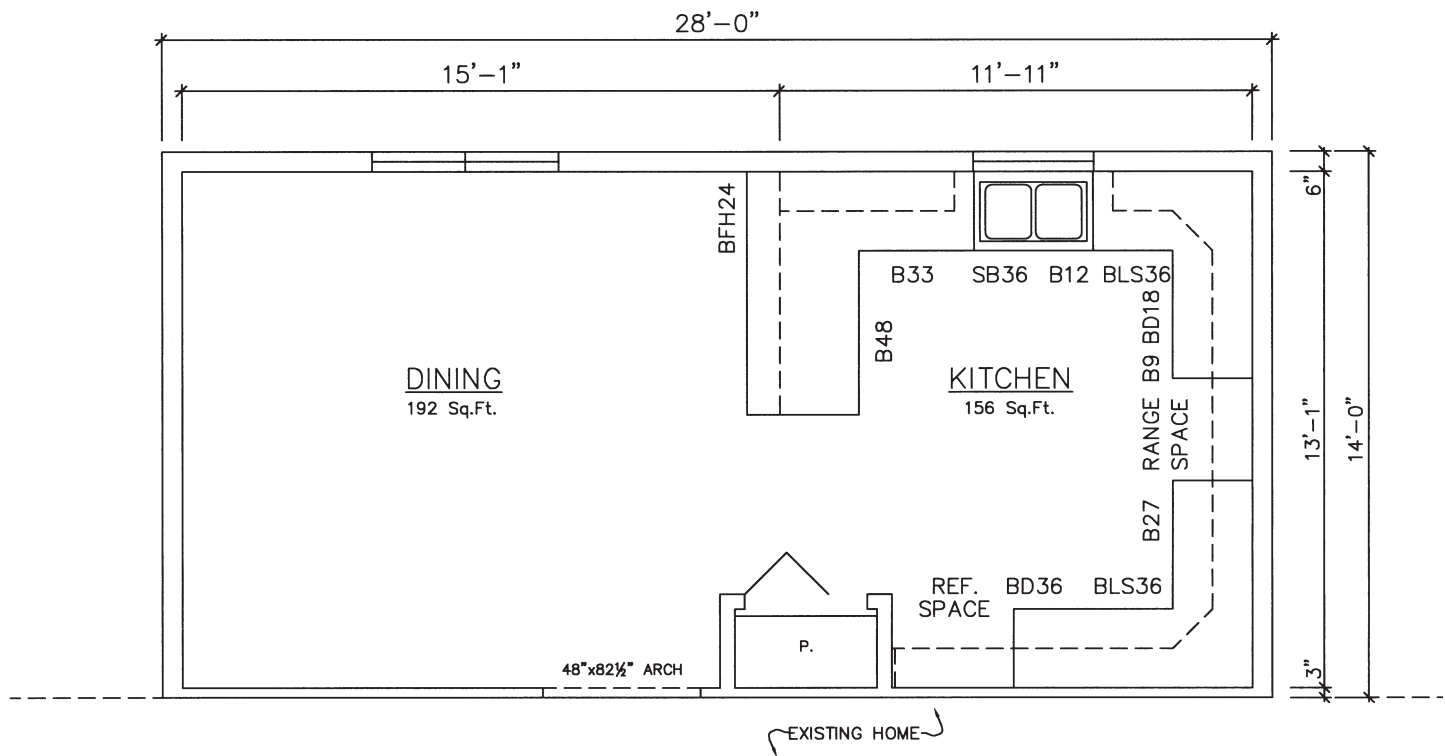


General Housing Corporation
Custom Crafted Construction

Master Bed Deluxe Bath Suite 22002 . . . 14' x 28'

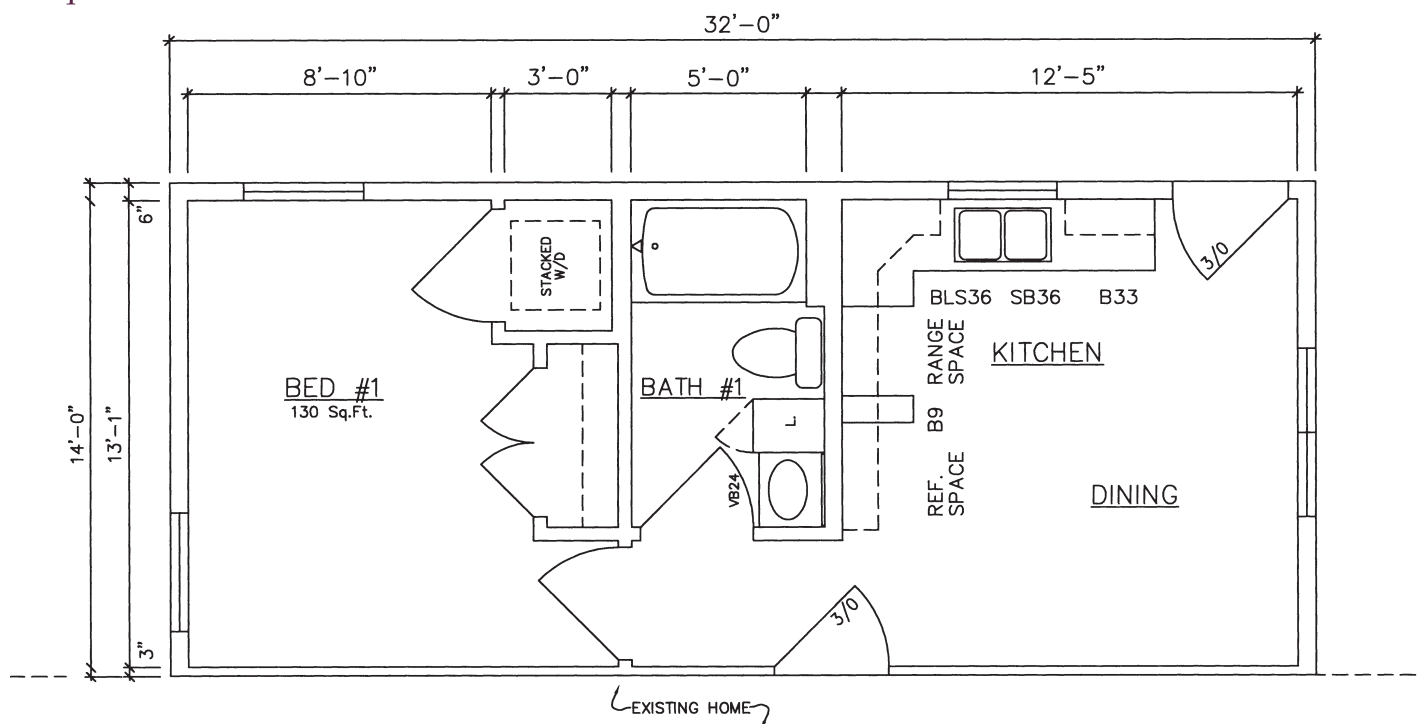
Addition Series

392 Sq. Ft. Total



Kitchen / Dining 22004 . . . 14' x 28'

448 Sq. Ft. Total



Mother-In-Law Suite 22006 . . . 14' x 32'

Advantage Series Standard Features

Floors

- Double 2x10 band joist on perimeter of floor
- 2 x 10 floor joists 16" O.C.
- 3/4" T&G OSB floor decking glued and nailed
- R-19 (6") fiberglass insulation on perimeter of 2x10 band joist
- 2x10 floor joists 24" O.C. 2nd floor on Williamsburg models
- Carpet and pad in bedrooms, living room, and dining room

Exterior Walls

- 2x6 exterior wall studs 16" O.C.
- R-19 (6") fiberglass insulation in sidewalls, with 7/16" OSB sheathing on all exterior walls
- Air infiltration barrier
- Mastic Eclipse Double 4" vinyl siding
- Pella Encompass white vinyl single hung windows with low-E glass and screens
- Window grilles on Williamsburg and 2-story models
- Therma-Tru insulated steel exterior doors with weatherstrip and threshold
- Vinyl shutters on front of house (except Alpine)
- Porch lights

Interior Walls

- 8' ceiling height
- 2x4 interior walls 16" O.C.
- 2x3 mating walls (2x6 where house comes together)
- 1/2" drywall glued and nailed to walls
- Walls finished with Glidden white latex paint

Exterior Roof

Roof Pitch:

- 4/12 on ranch and 2-story models
- 12/12 on Williamsburg models
- 9/12 & 6/12 on Breckenridge models
- 12/12 & 6/12 on Plymouth models
- 4/12 on 24 wide Ranch models
- 6/12 on Clarkston and Lexington models
- Pre-engineered truss 24" O.C.
- R-49 (16") fiberglass insulation
- 1/2" OSB roof sheathing
- 1 layer 15# felt under shingles
- CertainTeed 30 year asphalt granule fiberglass base shingles
- 20" overhang on 4/12 pitch roofs
- 12" overhang on 12/12 pitch roofs
- Vented soffit system and ridge vent

Ceiling

- 5/8" drywall affixed to trusses and finished with white latex paint
- Wood beams and vaulted ceiling in kitchen, dining room and living room on Alpine models

Interior Trim

- Finished passage and closet doors
- Clear pine finished wood moldings
- Dexter lock sets

Cabinets

- Merillat Basic Series Birch kitchen cabinets with Selfedge tops
- Merillat Basic Series Birch bath vanity cabinets with white 3/4" cultured marble tops
- Finished closets with vented shelves

Electrical

- Siemens 200 AMP, 40 space entrance panel (2 in duplex)
- All copper romex (sizes to code)
- Ceiling lights in all rooms but living room and family room
- 2-phone jacks
- Electric door chime
- 1 switched receptacle in living room
- Wall receptacles and smoke detectors to code
- Exterior outlet front and back
- Ceiling vent fan in all baths
- Painted range hood with light

Plumbing

- All polyethylene (PEX) water lines with shutoff valves and air chambers stubbed
- P.V.C. drainlines, traps and fittings
- Aker fiberglass bathtub with Peerless shower riser
- Stainless steel kitchen sink, 6" deep
- Peerless faucets on vanities, tub, and kitchen sink
- Washing machine outlet box in utility room
- American Standard Ceramic bath stools and tanks

Standard Color Choices

- Bathroom fixtures, siding, shutters, roof shingles, carpet, cabinets, trim, doors, and countertops
- Colors can be picked from color samples at builder

Available Features

Floors

- Congoleum Vinyl floor coverings in kitchen, baths and utility room

Exterior Walls

- 8" horizontal lap cedar siding
- Sliding glass doors
- Optional exterior doors
- Extra insulation in wall (R-21) or (R-24)
- Double Hung windows
- 3/4" Ridged Styrofoam (R-3.8)

Interior Walls

- Lofts on Williamsburg models
- Vault ceiling on ranch models

Exterior Roof

- Gable dormers on 12/12 pitch roofs w/2x6 walls
- 5/12, 6/12 & 7/12 roof pitches on ranch and 2-story models
- 40-70 lb. snow loads
- Porches for Ranch Style Homes

Ceilings

- Vaulted ceiling in living room
- 9' Ceilings
- Finished Pine

Electrical

- Circuit for electric range
- Circuit for electric dryer
- Phone jacks, TV jacks
- Ceiling fan wiring
- Communication box and conduit

Appliances

- Refrigerator 21 cu. ft. two-door
- Deluxe 30" electric range (incl. circuit)
- Deluxe 30" gas range (nat. or L.P.)
- Dishwasher 24" (built-in)
- Garbage disposal
- Automatic washer
- Electric dryer
- Vented range hood
- Microwave range hood

Plumbing/Heating

- Copper water supply lines
- Baseboard electric heat
- Whirlpool bathtubs
- Prepared for HVAC
- Glass bathtub and shower doors
- Utility/laundry tub
- Fireplace with fan and glass doors

Other Options

- Customized Floor Plans
- Merillat Spring Valley Oak, Maple, and Hickory Cabinets
- Stair handrail and balusters
- Opposite hand elevations
- Extra windows available
- Garage packages (includes shingles, siding, corner post, fascia and soffit material)
- Optional interior doors and trim
- 30' wide floor plans
- 32' wide floor plans

General Housing Corporation

4650 E. Wilder Road, Bay City, MI 48706 • Phone (800) 351-3664 (989) 684-8078 • Fax (989) 684-2914 • Web Site www.genhouse.com

All prices, specifications and materials are subject to change without notice. Some of the features shown on elevation drawings in the literature may be options.

© 2017 General Housing Corp. AD-1 - 05/17