



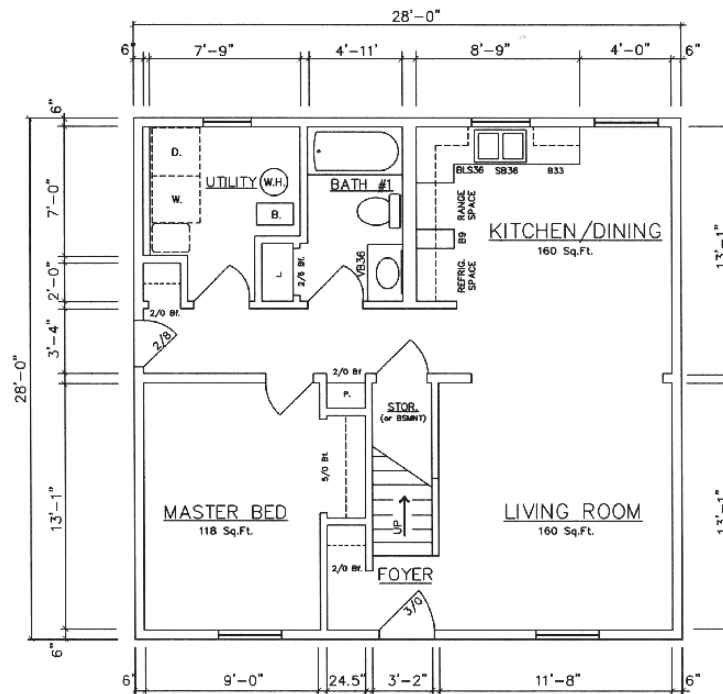
Chalet
1,297-2,224 sq. ft.
Williamsburg



General Housing Corporation
Custom Crafted Construction

Chalet 28' & 32' Models

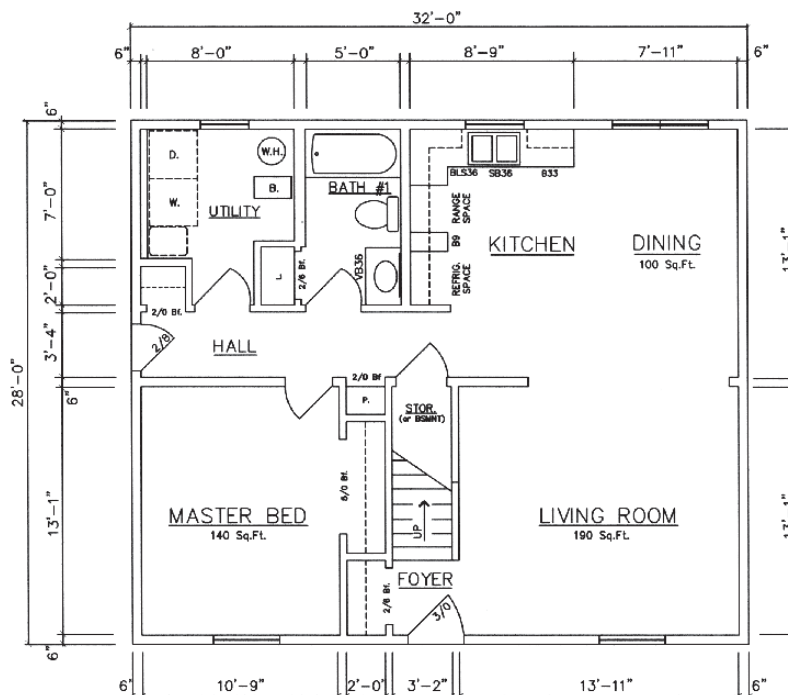
1,297 sq. ft. Total for 28' Williamsburg Chalet



1st Floor – Williamsburg 11032 (Basement)
11030 (Crawlspace)

see 2nd floor plan on back page

1,482 sq. ft. Total for 32' Williamsburg Chalet

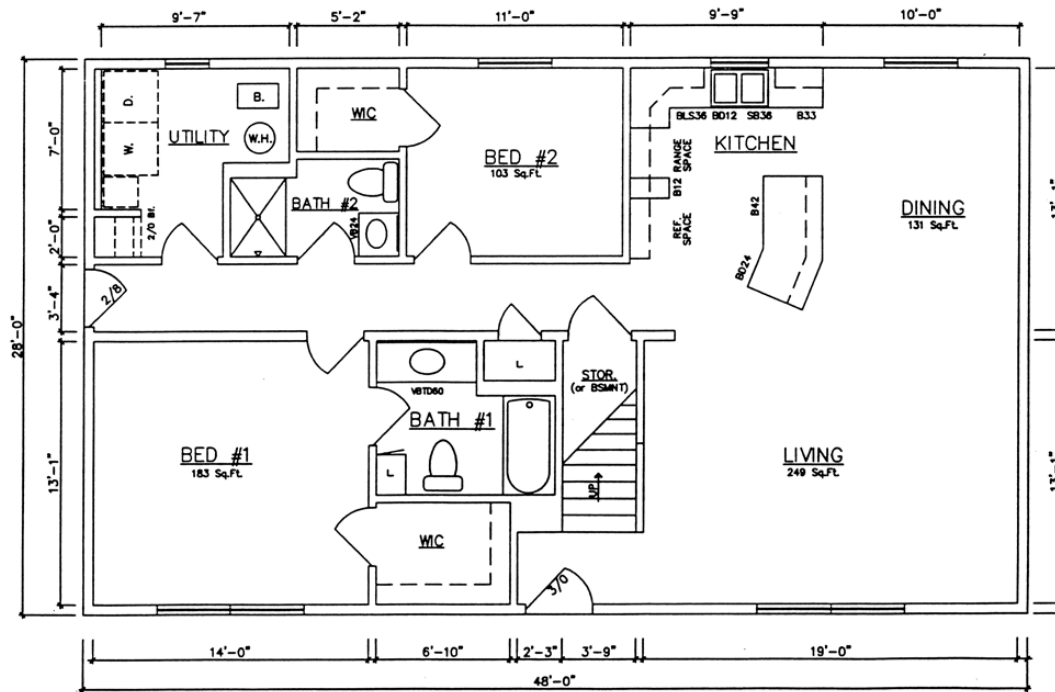


1st Floor – Williamsburg 11020 (Basement)
11018 (Crawlspace)

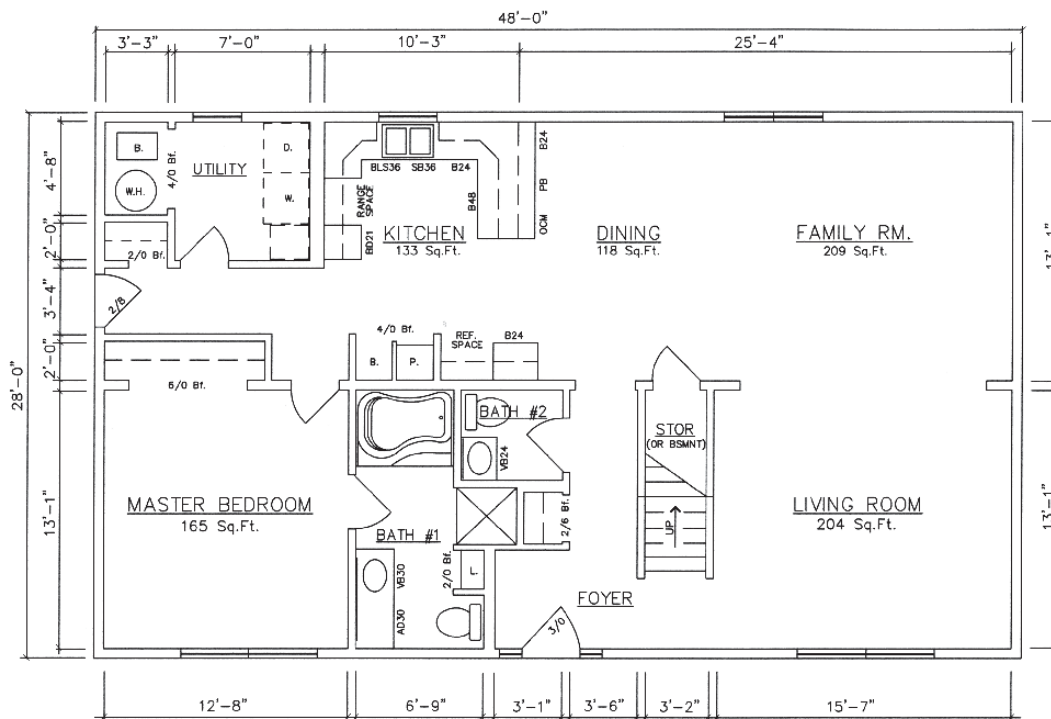
see 2nd floor plan on back page

Chalet 48' Model

2,224 sq. ft. Total for 48' Williamsburg Chalet



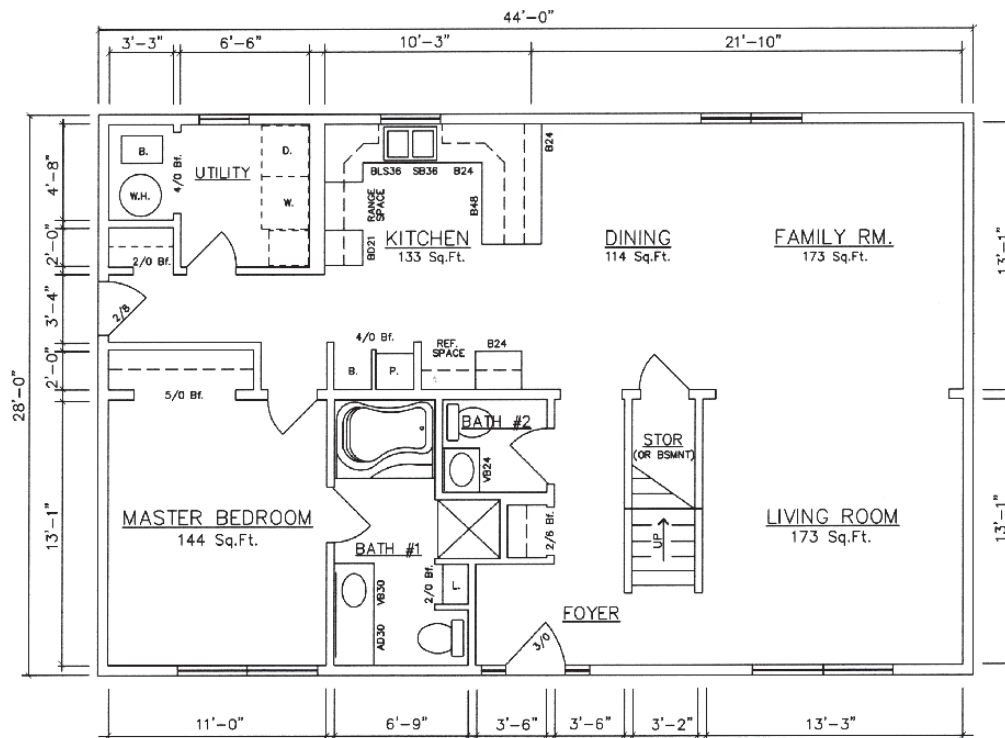
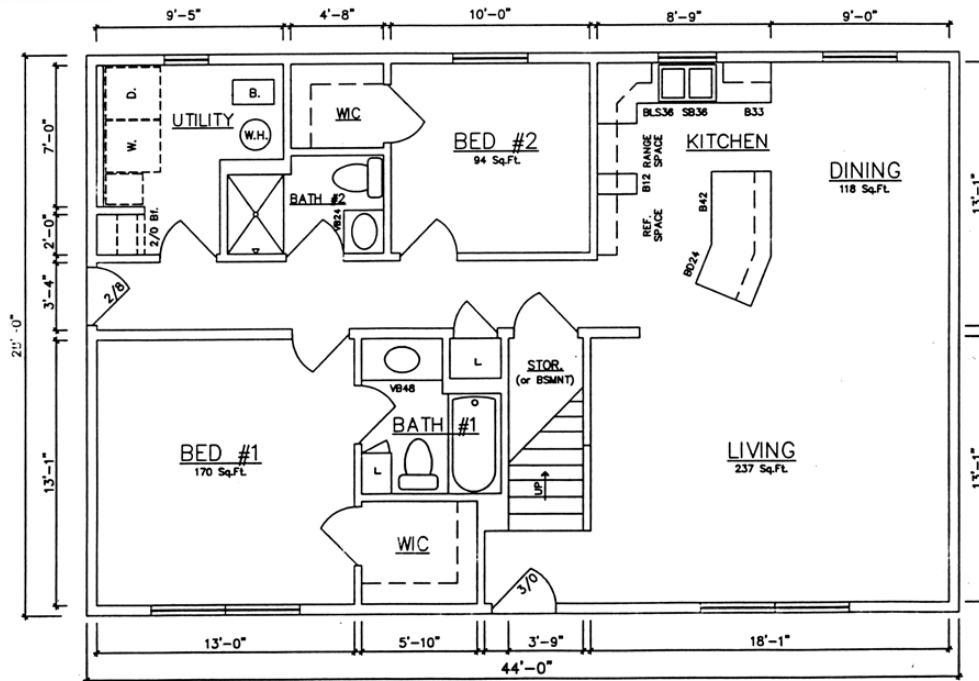
1st Floor – Williamsburg 16010 (Crawlspace) - Series C
16012 (Basement) - Series C



1st Floor – Williamsburg 11072 (Basement) - Series C
11070 (Crawlspace) - Series C

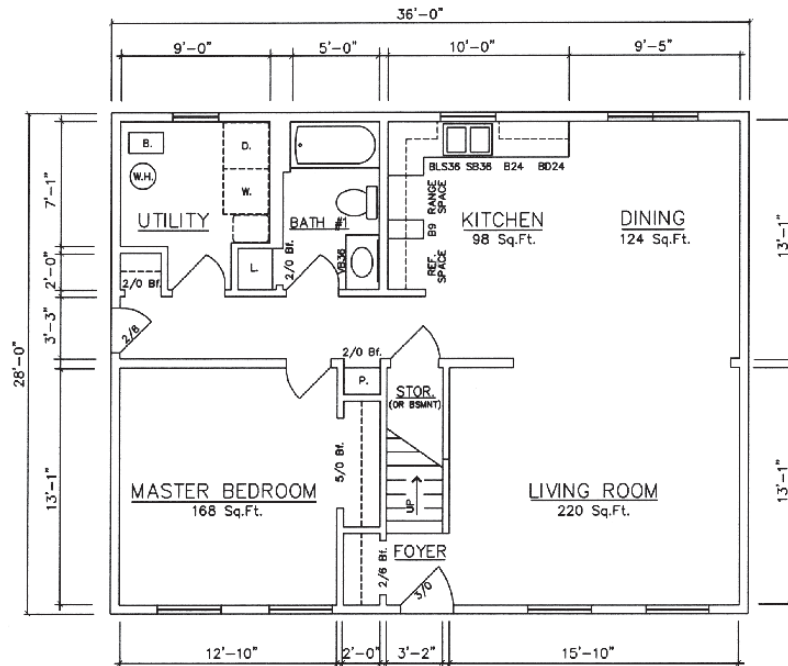
Chalet 44' Model

2,038 sq. ft. Total for 44' Williamsburg Chalet



Chalet 36' & 40' Models

1,668 sq. ft. Total for 36' Williamsburg Chalet

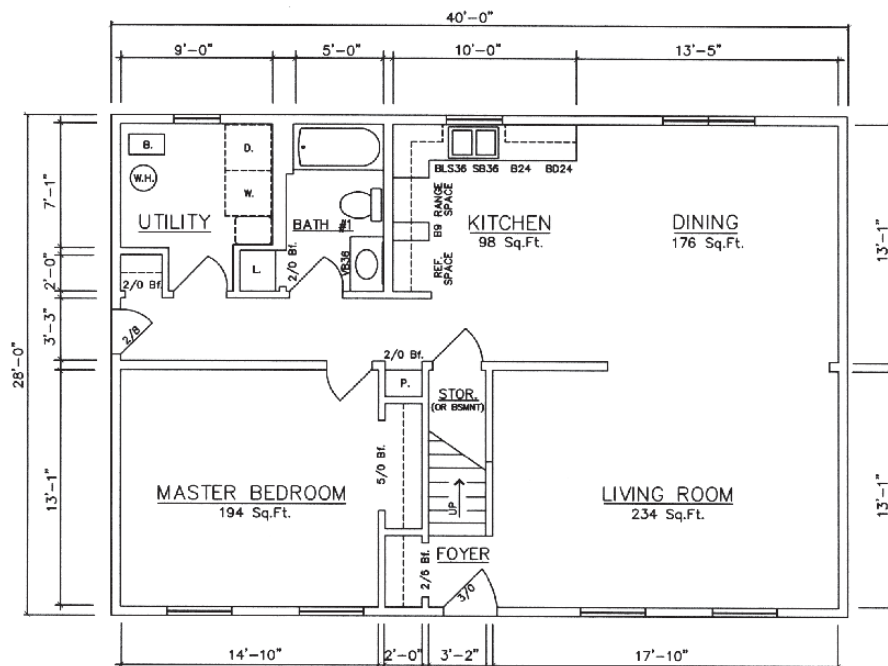


1st Floor – Williamsburg 11016 (Basement)

11014 (Crawlspace)

see 2nd floor plan on back page

1,853 sq. ft. Total for 40' Williamsburg Chalet



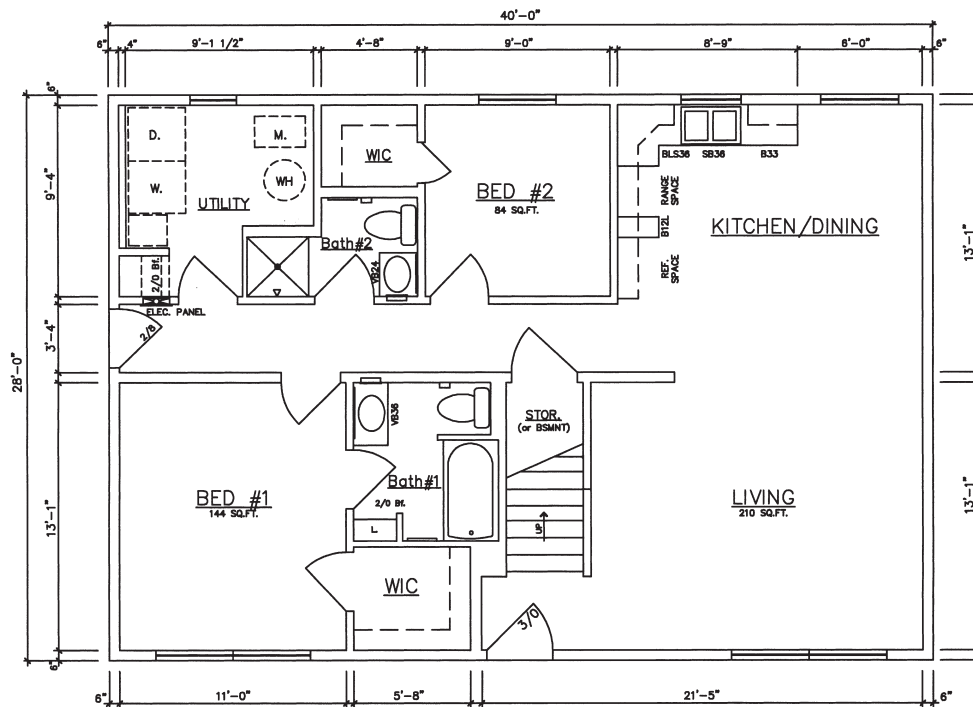
1st Floor – Williamsburg 11042 (Basement) - Series A

11040 (Crawlspace) - Series A

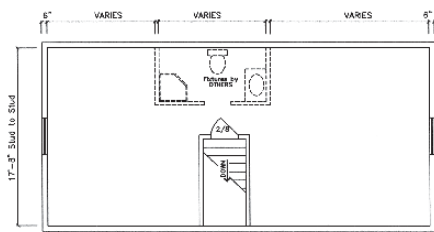
see 2nd floor plan on back page

Chalet 40' Model

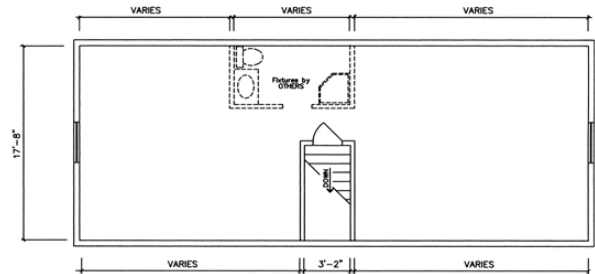
1,853 sq. ft. Total for 40' Williamsburg Chalet



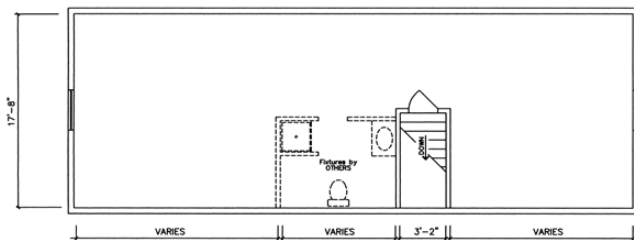
1st Floor – Williamsburg 11022 (Crawlspace) - Series B
11024 (Basement) - Series B



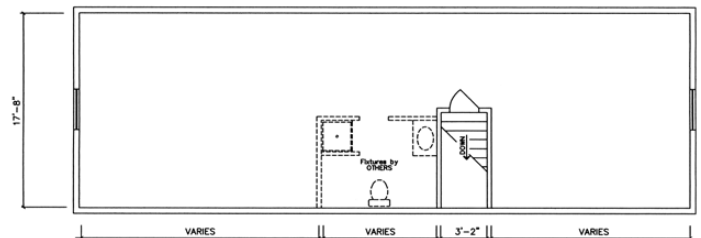
2nd Floor (for 28' and 32' Williamsburg Chalet)



2nd Floor (for 36' and 40' Williamsburg Chalet)



2nd Floor (for 44' Williamsburg Chalet)



2nd Floor (for 48' Williamsburg Chalet)

General Housing Corporation

4650 E. Wilder Road, Bay City, MI 48706 • Phone (800) 351-3664 (989) 684-8078 • Fax (989) 684-2914 • Web Site www.genhouse.com

All prices, specifications and materials are subject to change without notice. Some of the features shown on elevation drawings in the literature may be options.

The 2nd floor of a 2-Module Williamsburg Model is unfinished from the factory

© 2014 General Housing Corp. C3-1/14