



Cottages

Cottages

1,464-2,224 sq. ft.

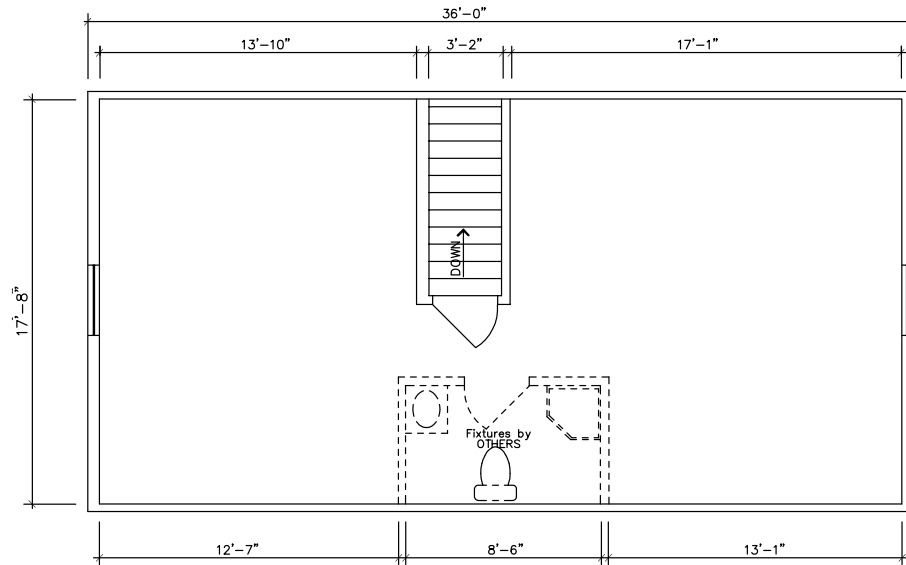
Riverview • Harbor Springs • Cedar Springs



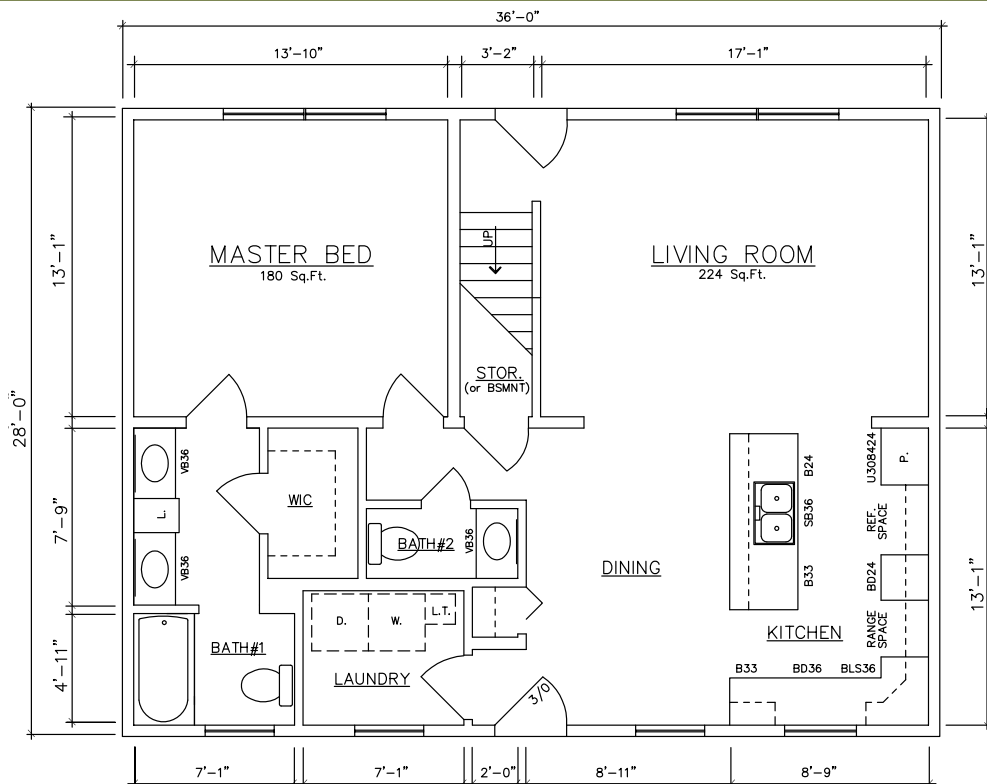
General Housing Corporation
Custom Crafted Construction

Riverview 36' Model

1,668 sq. ft. Total



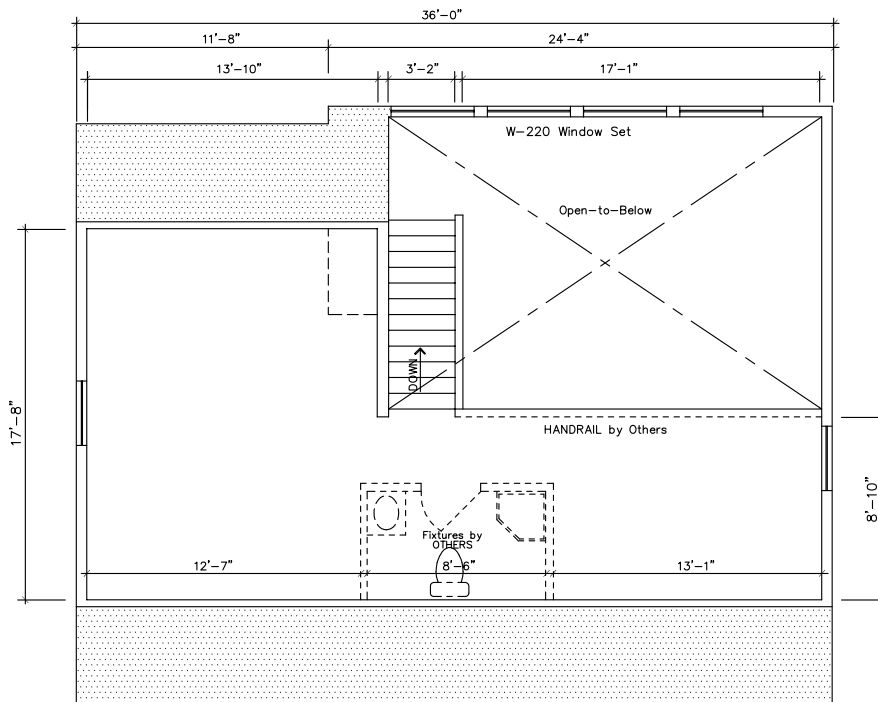
2nd Floor (660 sq. ft.)



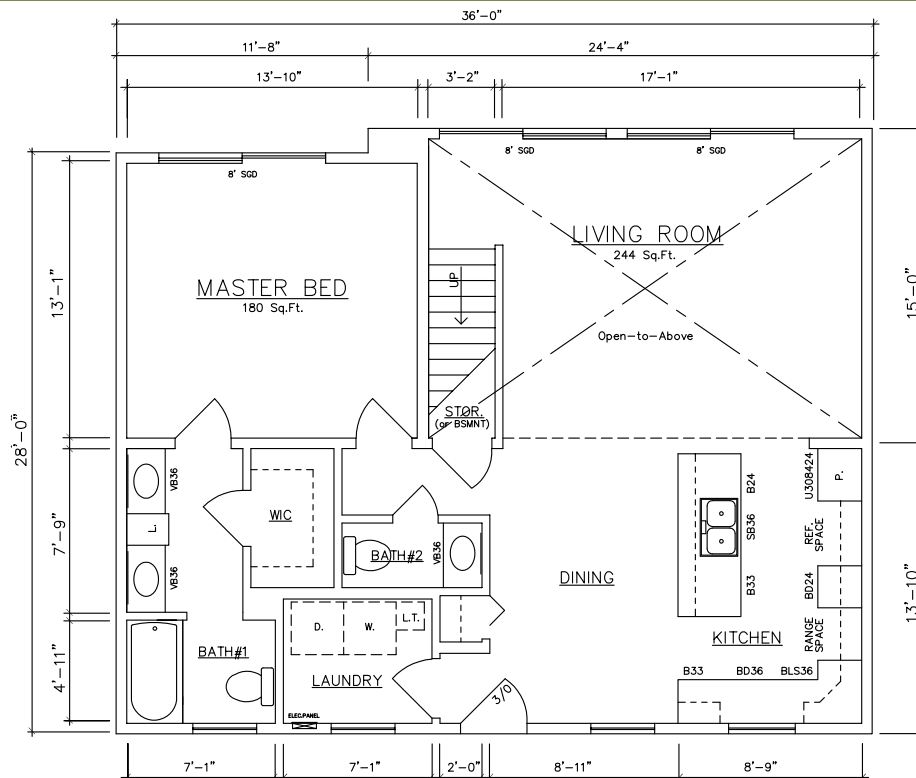
1st Floor (1,008 sq. ft.) – 36' Riverview 11026 (Crawlspace)
11028 (Basement)

Riverview 36' Model

1,494 sq. ft. Total



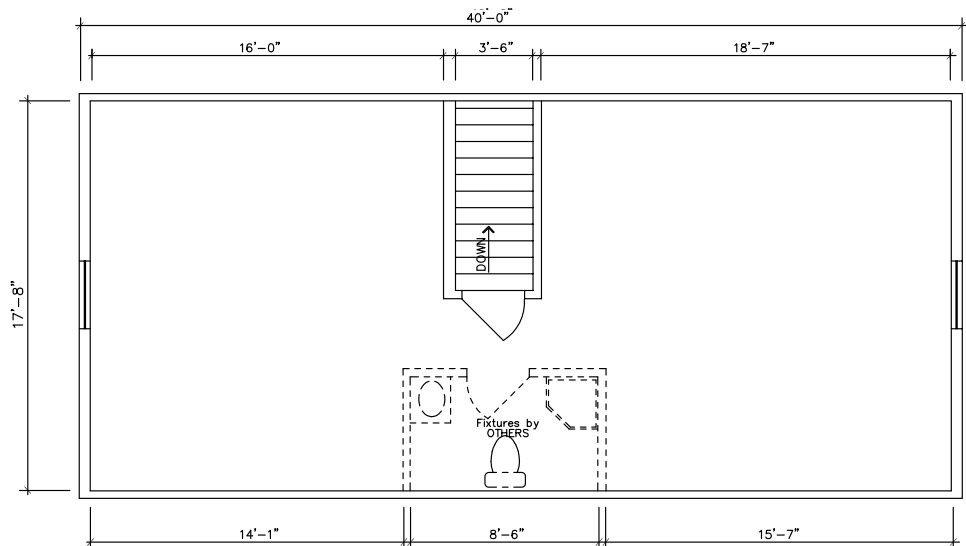
2nd Floor (462 sq. ft.)



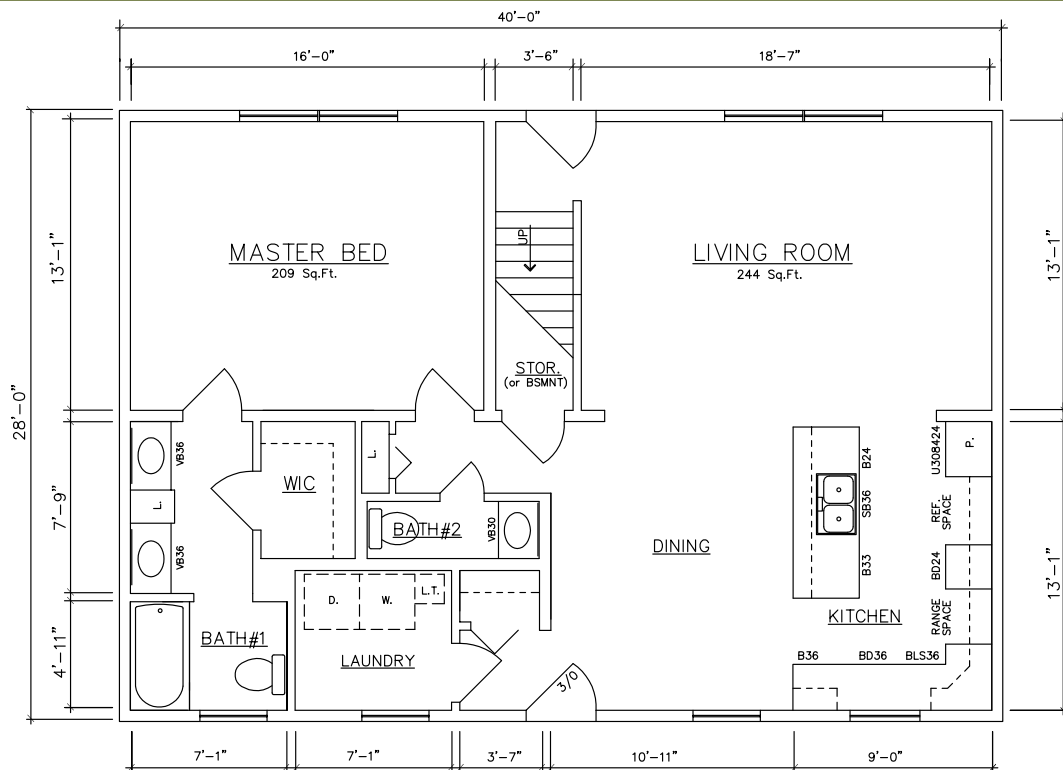
1st Floor (1,032 sq. ft.) – 36' Riverview Signature Series 11026 (Crawlspace)
 (w/Bump-out Tru-Vault OPTION) 11028 (Basement)

Riverview 40' Model

1,853 sq. ft. Total



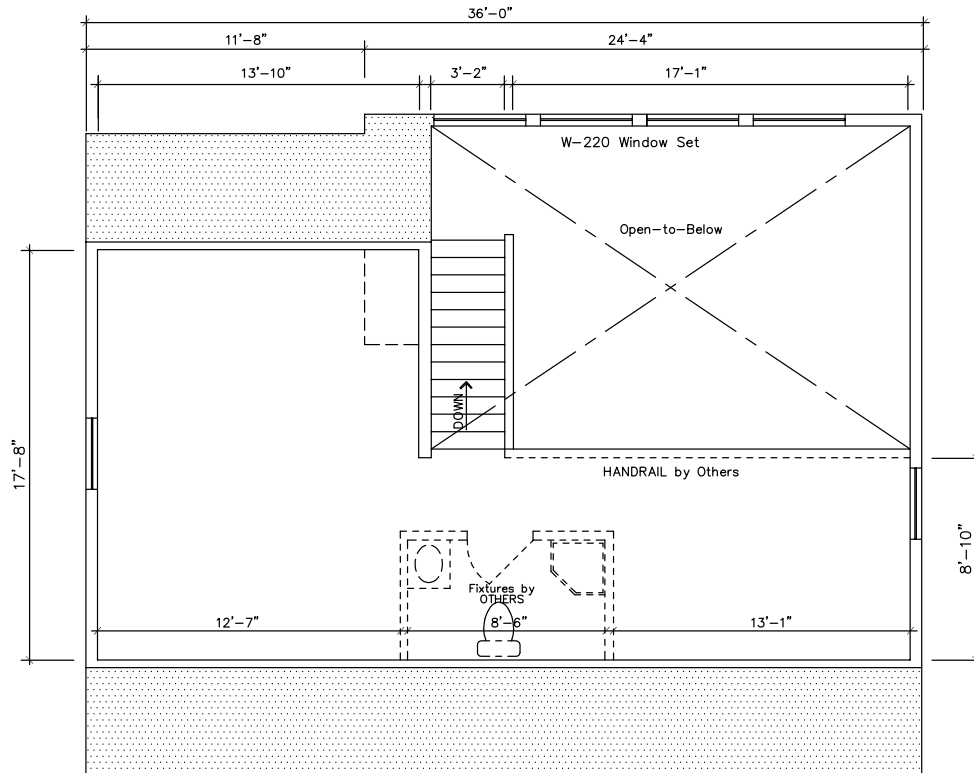
2nd Floor (733 sq. ft.)



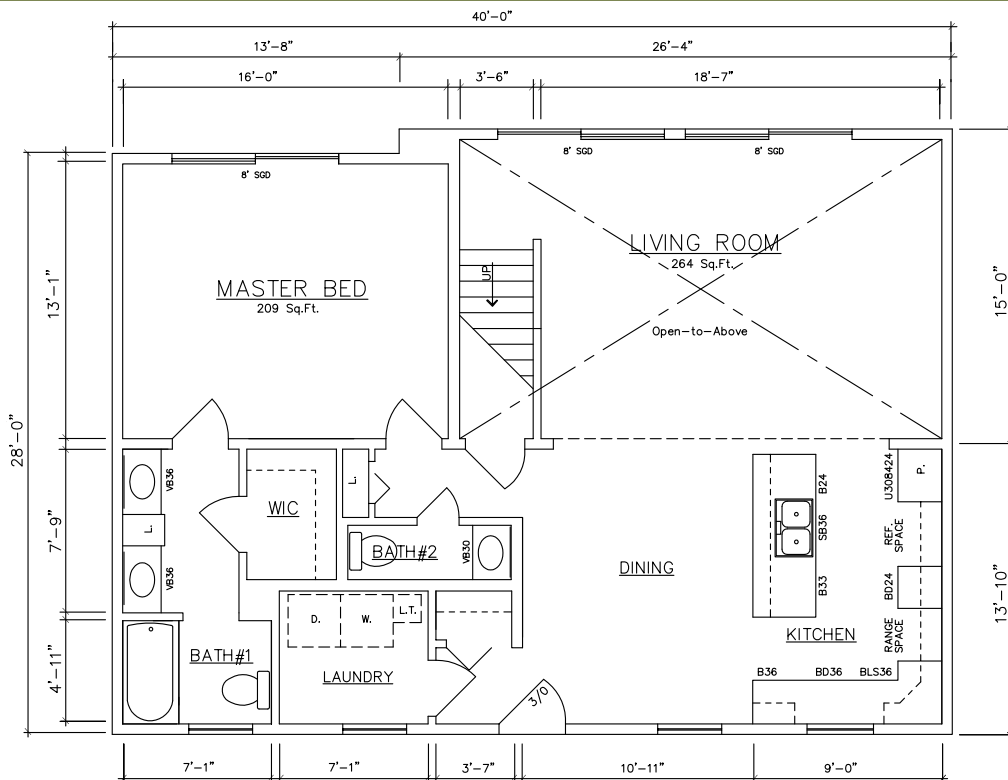
1st Floor (1,120 sq. ft.) – 40' Riverview 11034 (Crawlspace)
11036 (Basement)

Riverview 40' Model

1,652 sq. ft. Total



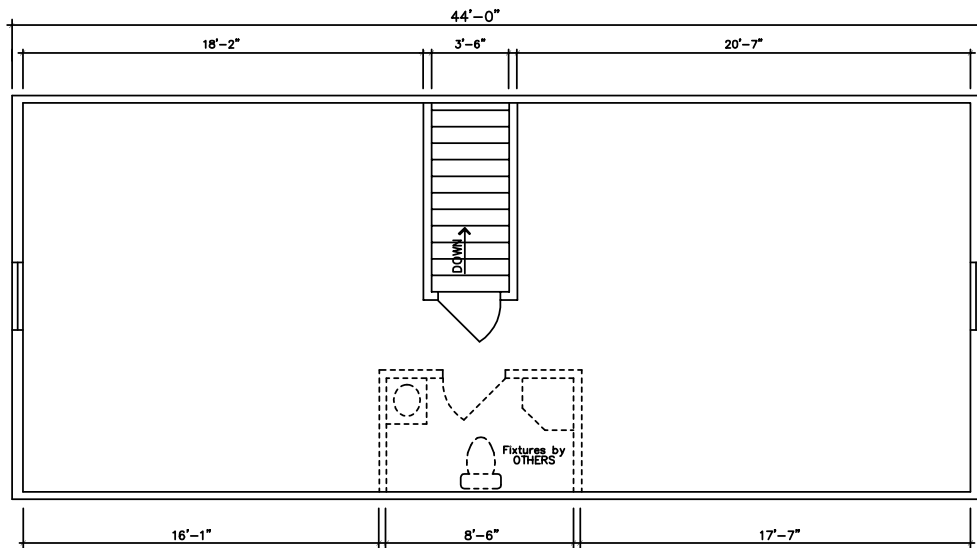
2nd Floor (506 sq. ft.)



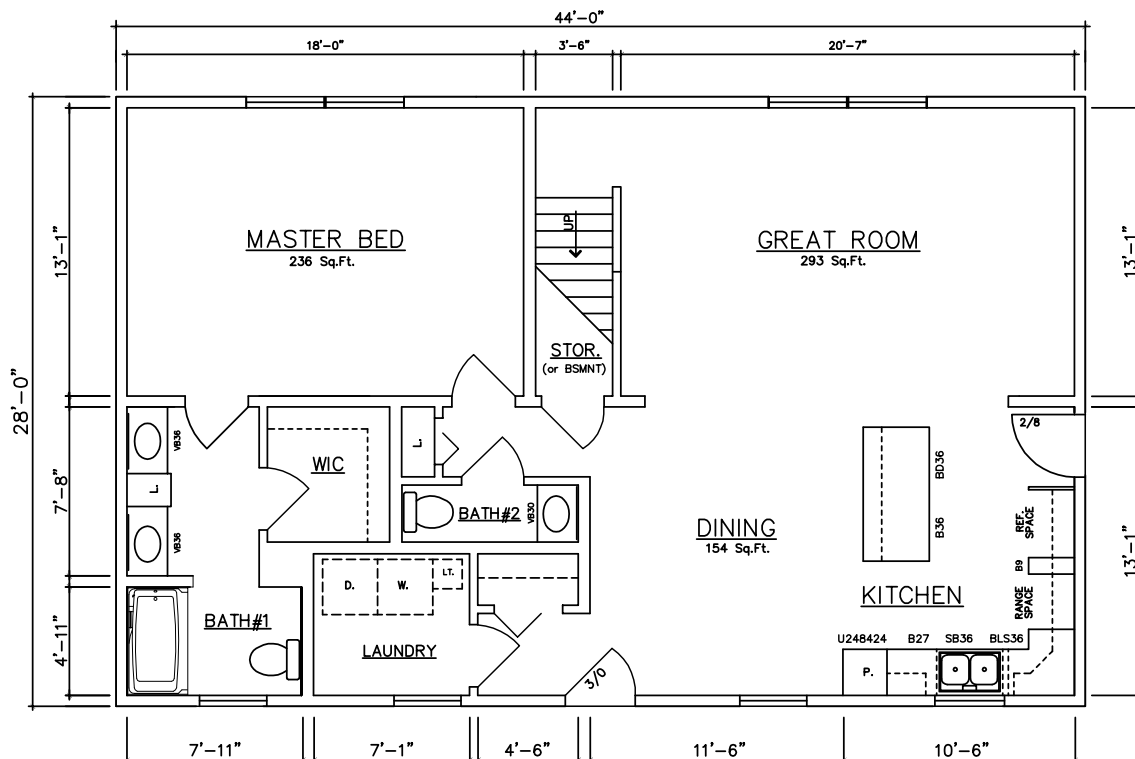
1st Floor (1,146 sq. ft.) – 40' Riverview Signature Series 11034 (Crawlspace)
(w/Bump-out Tru-Vault OPTION) 11036 (Basement)

Riverview 44' Model

2,038 sq. ft. Total



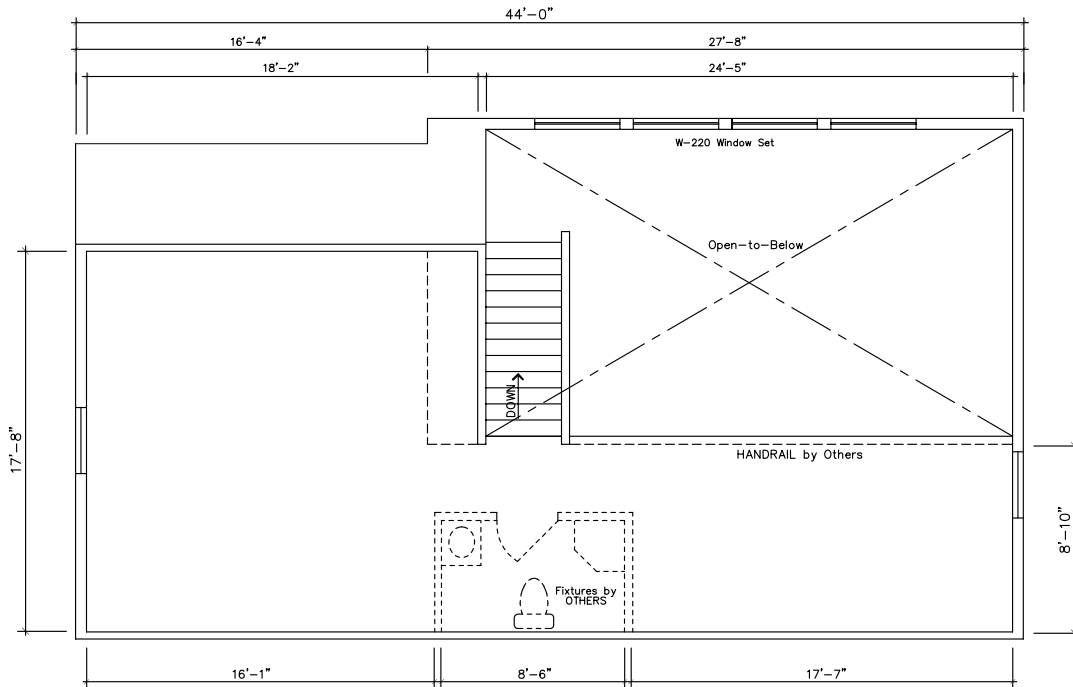
2nd Floor (806 sq. ft.)



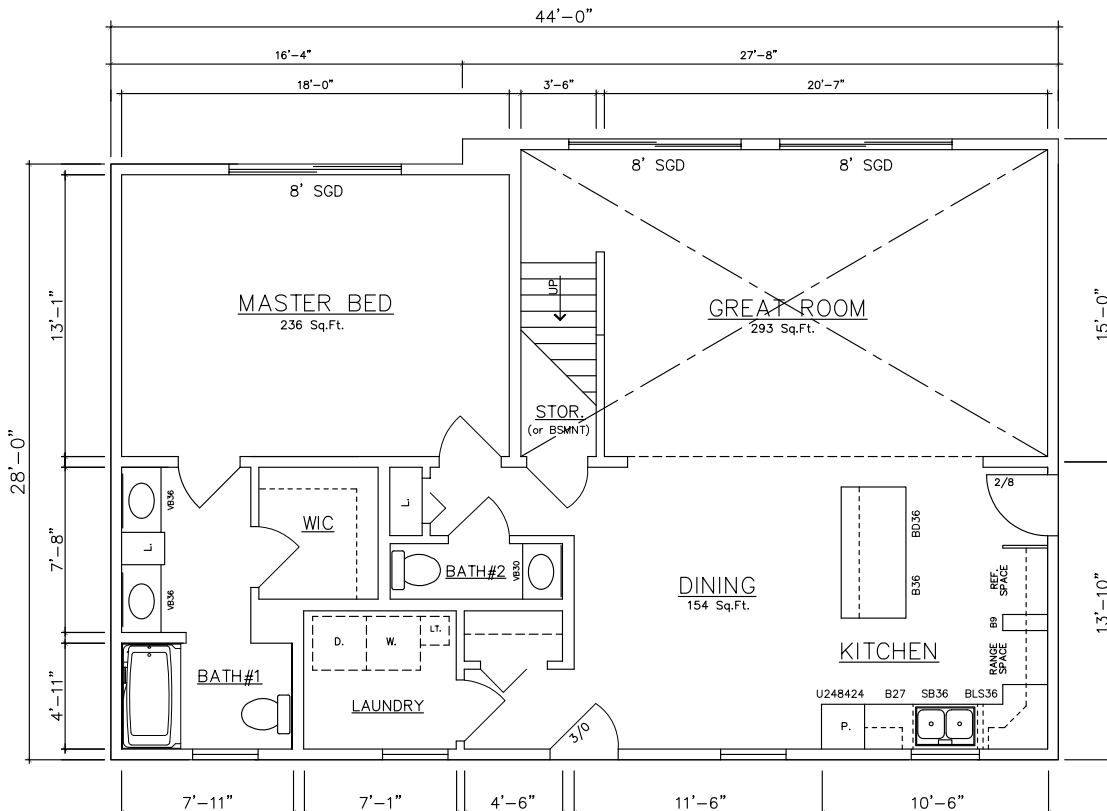
1st Floor (1,232 sq. ft.) – 44' Riverview 11074 (Crawlspace)
11076 (Basement)

Riverview 44' Model

1,834 sq. ft. Total



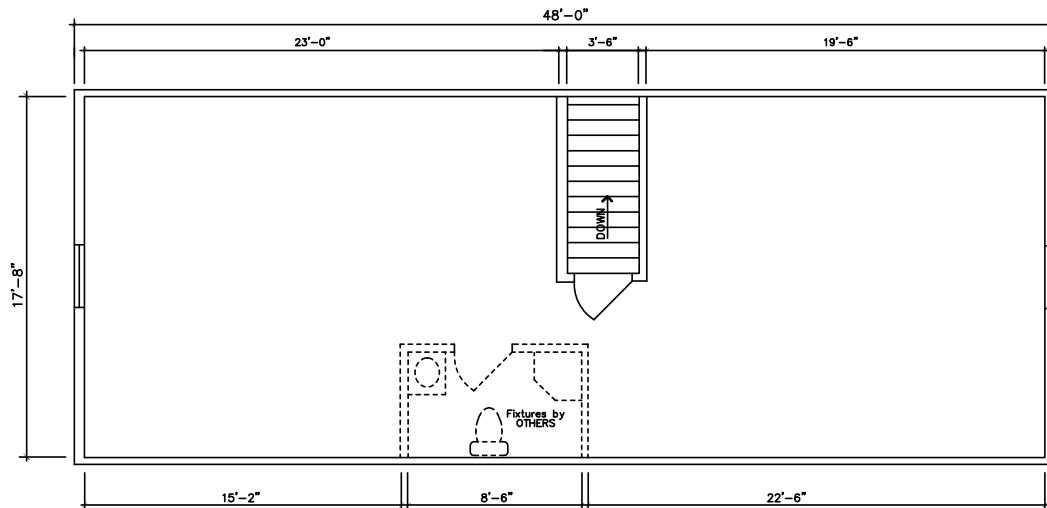
2nd Floor (570 sq. ft.)



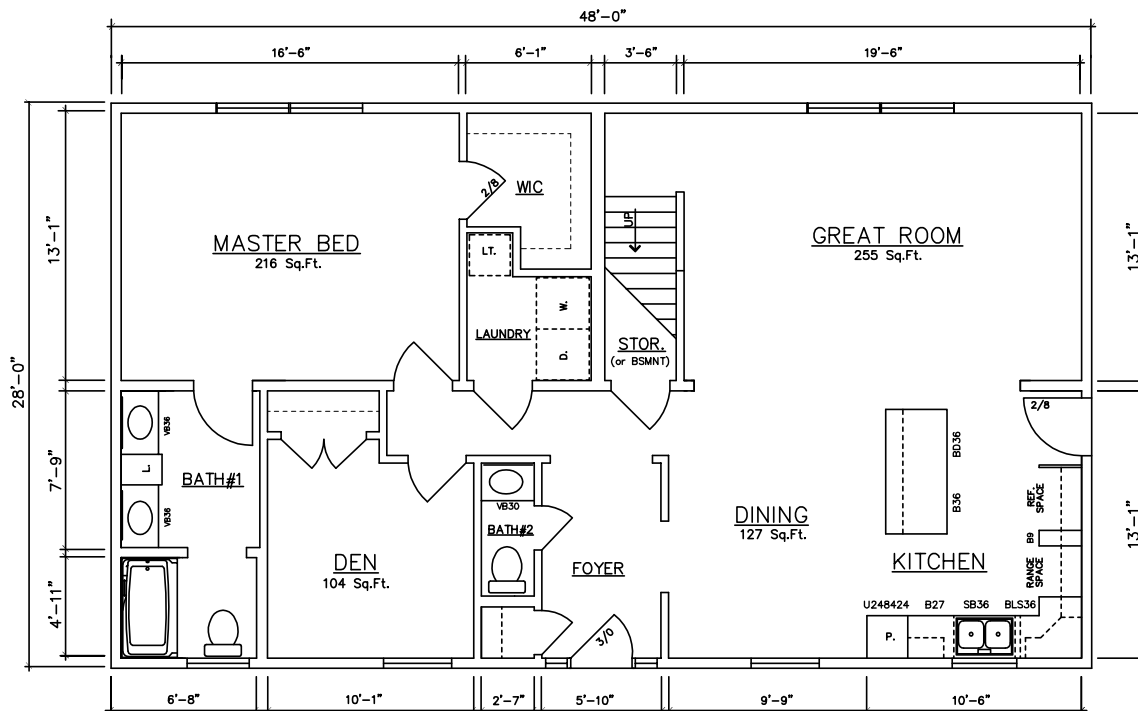
1st Floor (1,264 sq. ft.) – 44' Riverview Signature Series 11074 (Crawlspace)
 (w/Bump-out Tru-Vault OPTION) 11076 (Basement)

Riverview 48' Model

2,224 sq. ft. Total



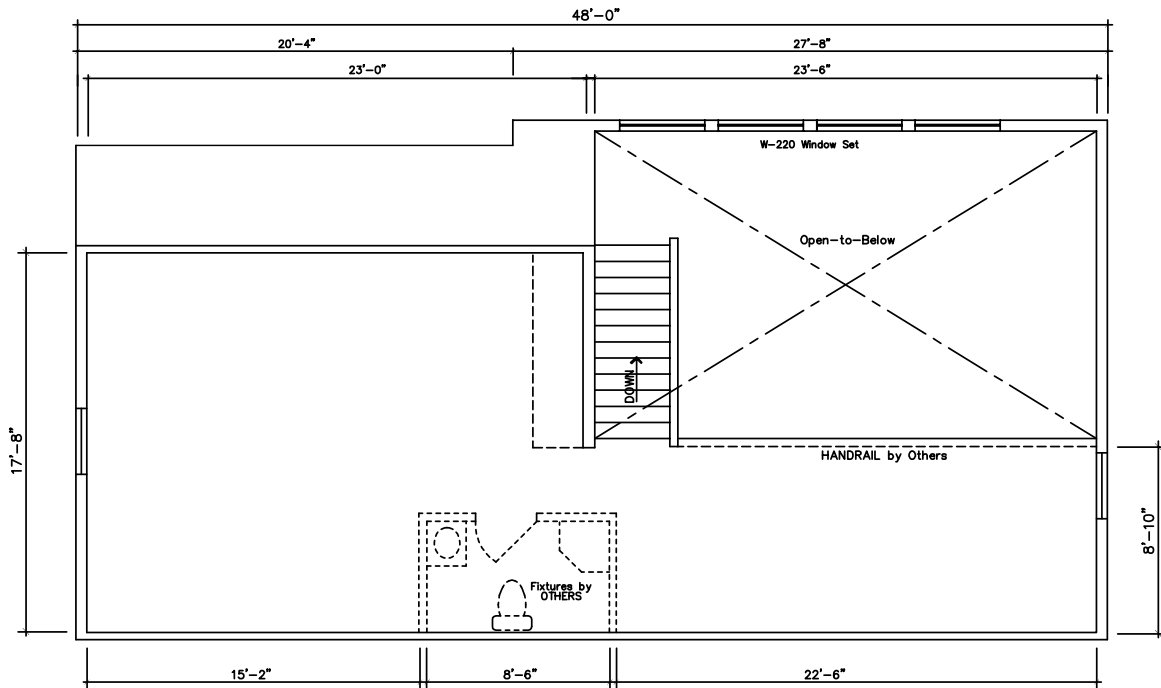
2nd Floor (880 sq. ft.)



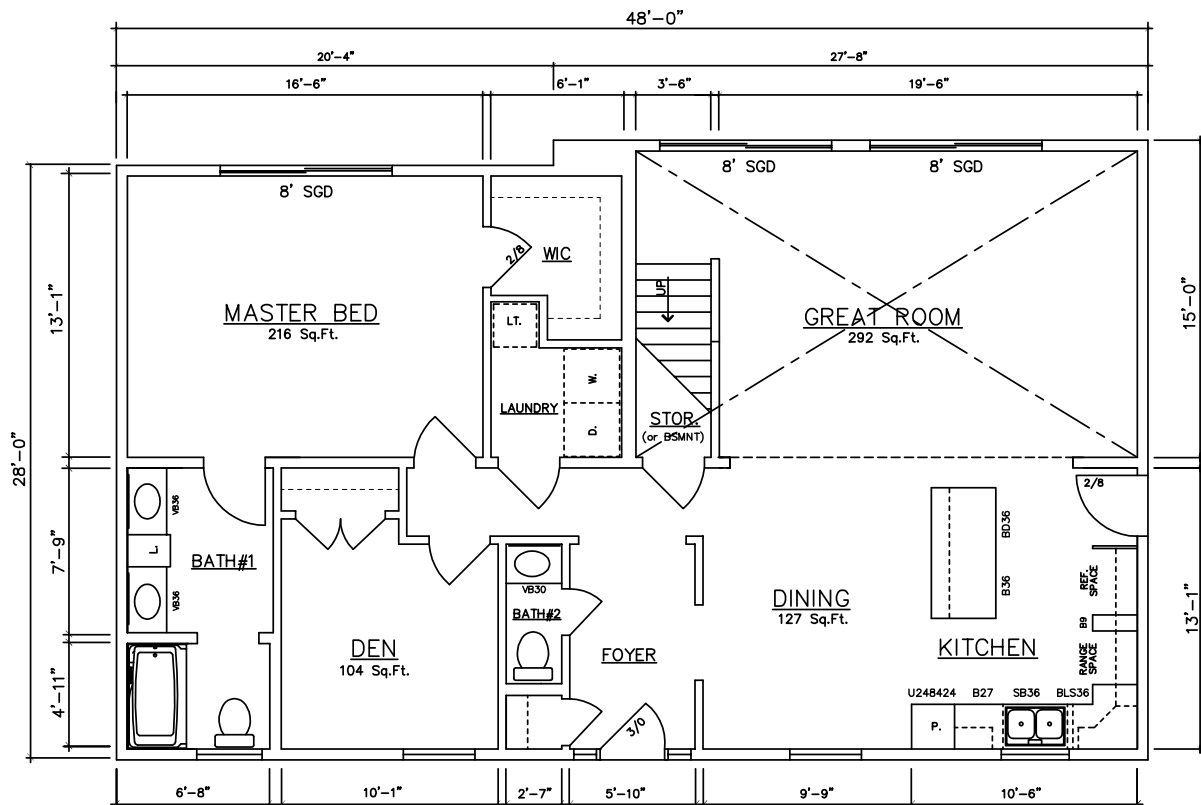
1st Floor (1,344 sq. ft.) – 48' Riverview 11078 (Crawlspace)
11080 (Basement)

Riverview 48' Model

1,834 sq. ft. Total



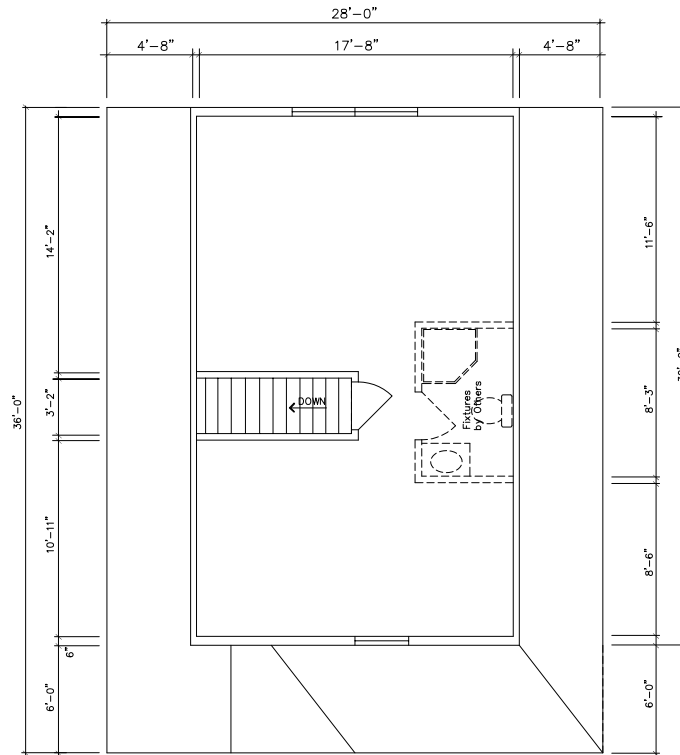
2nd Floor (570 sq. ft.)



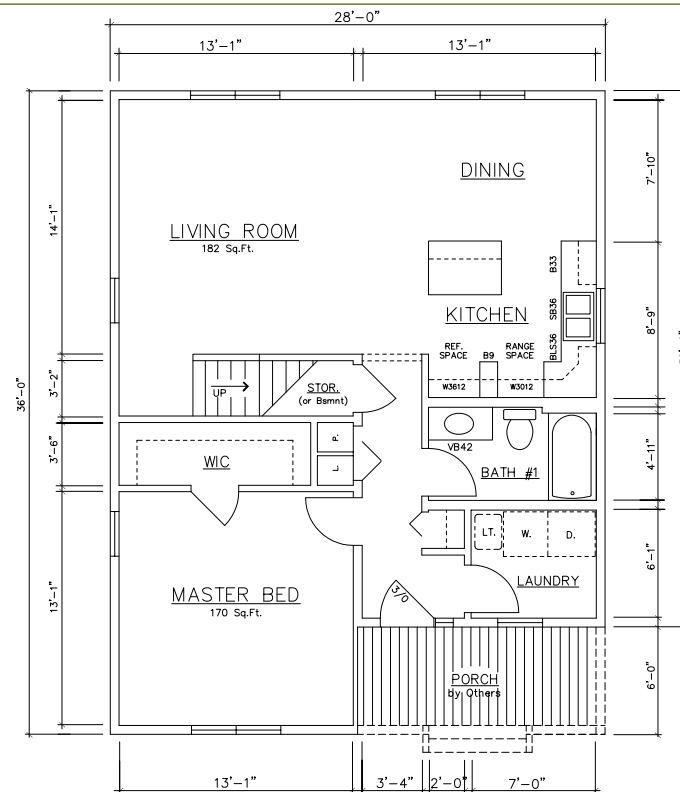
1st Floor (1,264 sq. ft.) – 44' Riverview Signature Series 11074 (Crawlspace)
(w/Bump-out Tru-Vault OPTION) 11076 (Basement)

Harbor Springs 36'/30' Model

1,464 sq. ft. Total



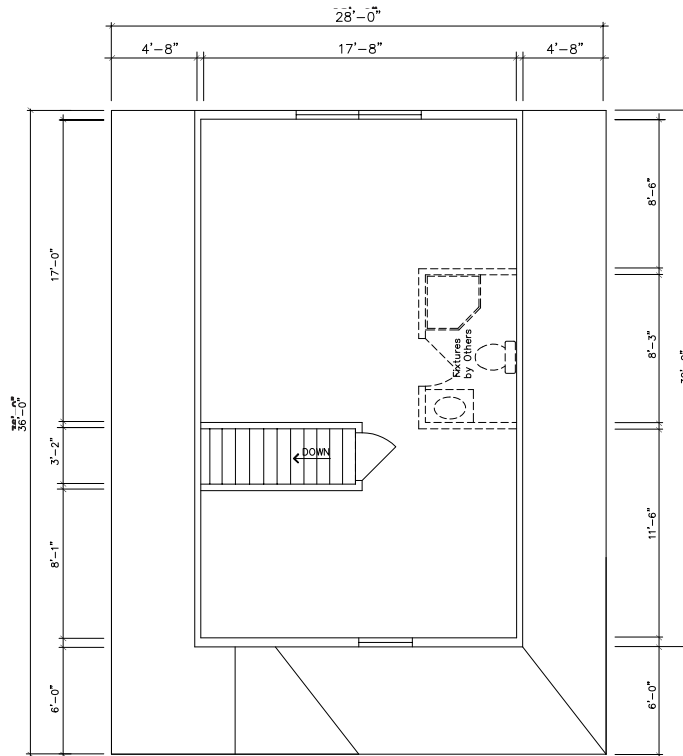
2nd Floor (540 sq. ft.)



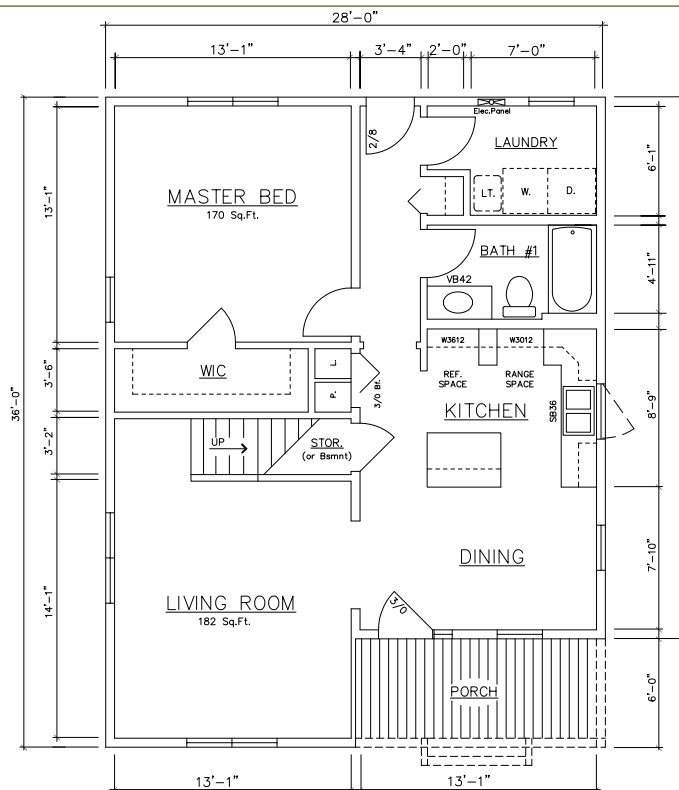
1st Floor (924 sq. ft.) – 36'/30' Harbor Springs 11054 (Crawlspace)
11056 (Basement)

Cedar Springs 36'/30' Model

1,464 sq. ft. Total



2nd Floor (540 sq. ft.)



1st Floor (924 sq. ft.) – 36'/30' Cedar Springs 11064 (Crawlspace)
11066 (Basement)



General Housing Corporation
Custom Crafted Construction

General Housing Corporation
4650 E. Wilder Road
Bay City, MI 48706

Phone (800) 351-3664
(989) 684-8078
Fax (989) 684-2914
www.genhouse.com