



2-Story
2,464 sq. ft.

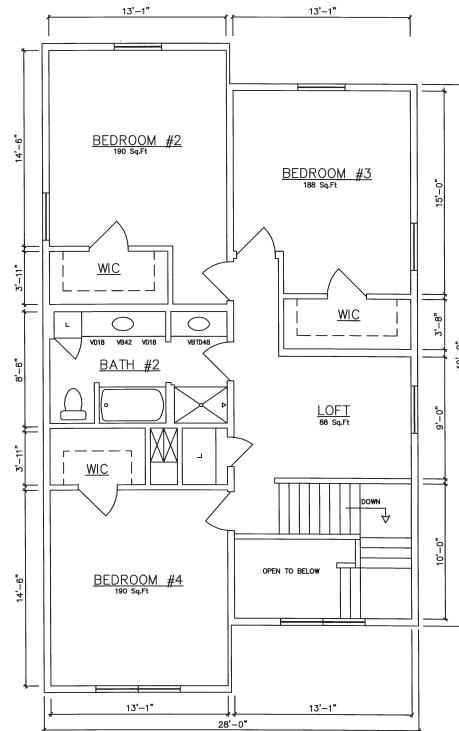
Oakwood



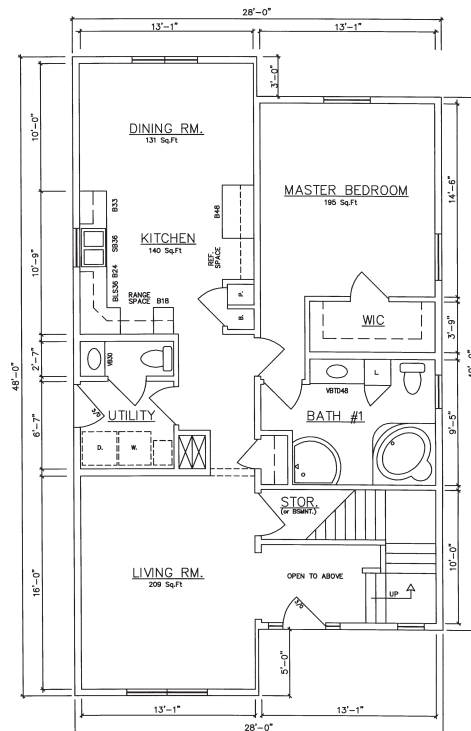
General Housing Corporation
Custom Crafted Construction

Oakwood 48' Model

2,464 sq. ft. Total



2nd Floor – (1,232 sq. ft.)



1st Floor – (1,232 sq. ft.) - Oakwood 16020 (Crawlspace) 16022 (Basement)

General Housing Corporation

4650 E. Wilder Road, Bay City, MI 48706 • Phone (800) 351-3664 (989) 684-8078 • Fax (989) 684-2914 • Web Site www.genhouse.com

All prices, specifications and materials are subject to change without notice. Some of the features shown on elevation drawings in the literature may be options.
© 2019 General Housing Corp. 01 - 09/19