



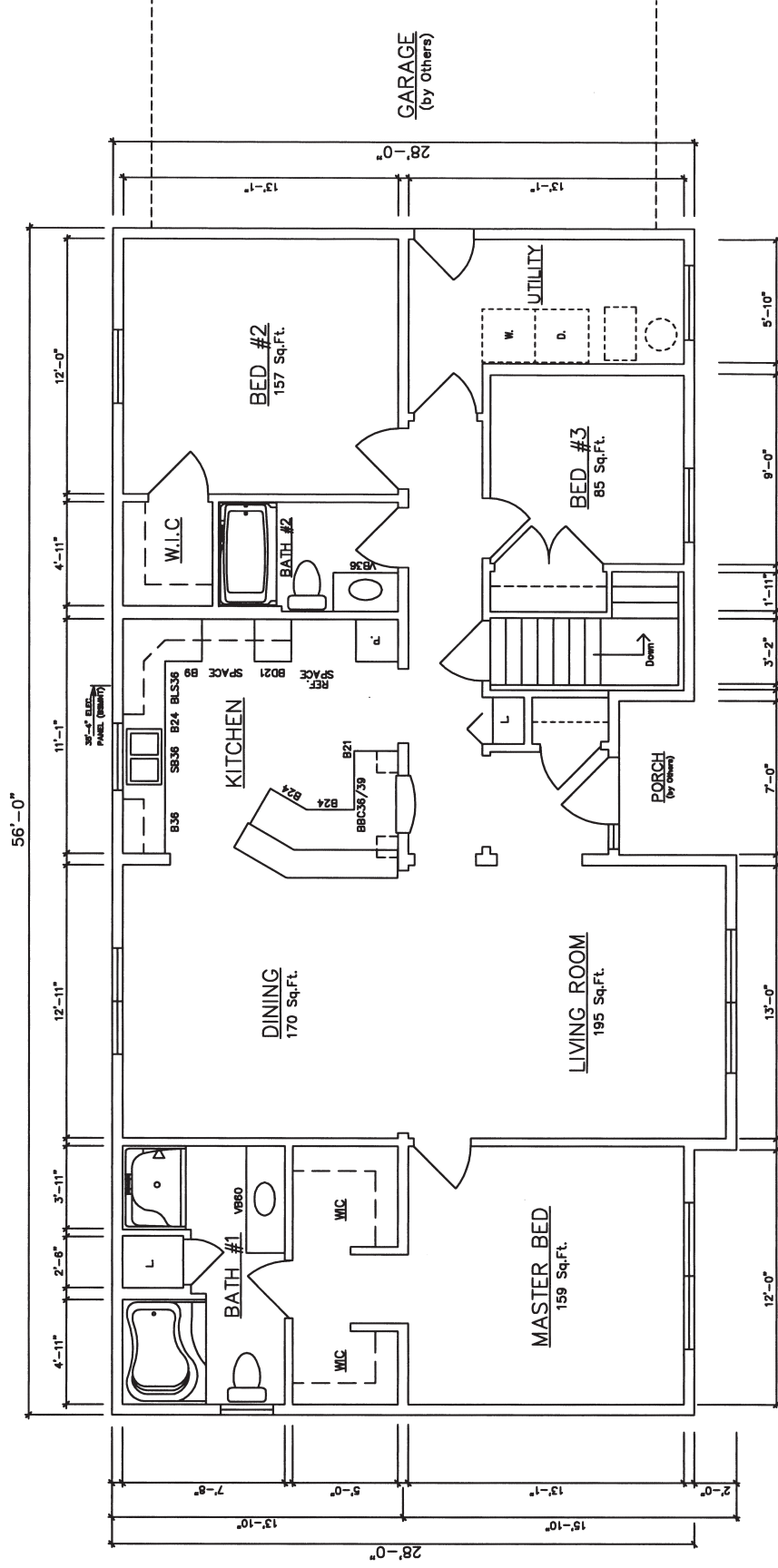
Ranch
1,568-1,848 sq. ft.

Essex II • Essex III • Essex IV



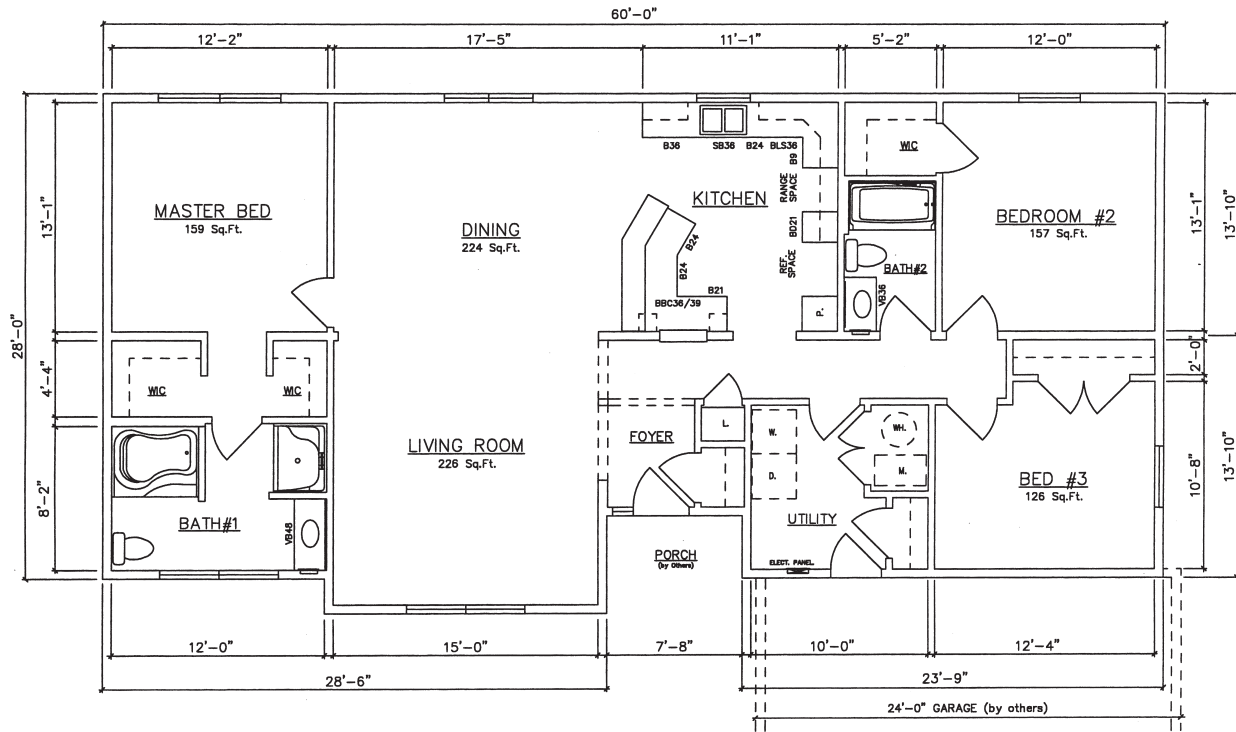
General Housing Corporation
Custom Crafted Construction

Essex III

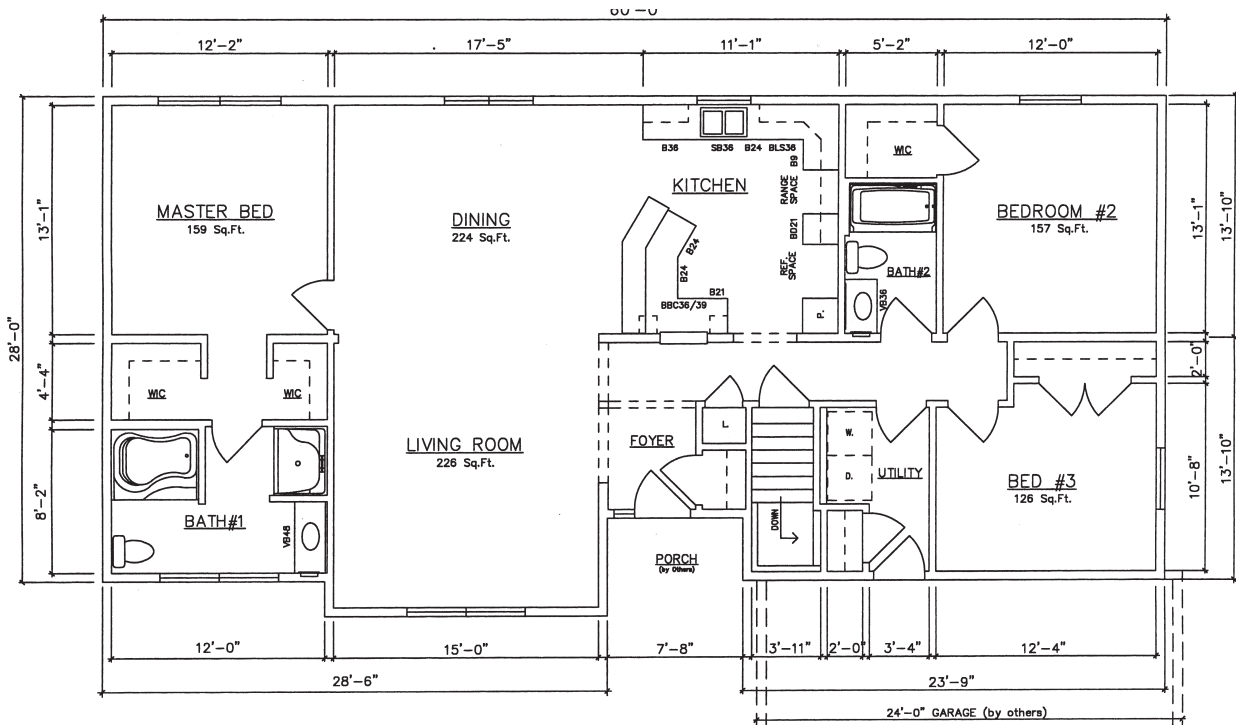


Essex III 14154 (End Garage - Basement) 1,568 sq. ft.

Essex IV



Essex IV 14188 (Crawlspace) 1,660 sq. ft.



Essex IV 14190 (Basement) 1,660 sq. ft.

General Housing Corporation

4650 E. Wilder Road, Bay City, MI 48706 • Phone (800) 351-3664 (989) 684-8078 • Fax (989) 684-2914 • Web Site www.genhouse.com

All prices, specifications and materials are subject to change without notice. Some of the features shown on elevation drawings in the literature may be options.

© 2016 General Housing Corp. R10-01/16