



*Great Room
Ranches
1,232-1,568 sq. ft.*

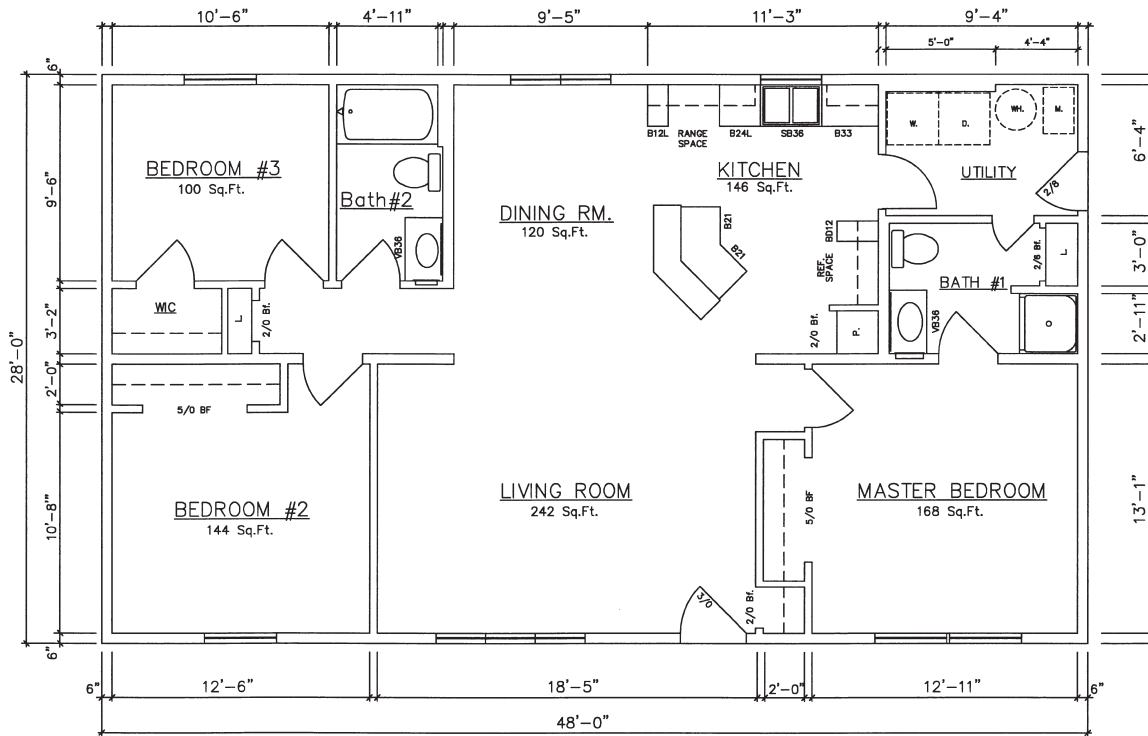
Hamden III • Amherst III • Auburn III

Brighton III • Auburn IV

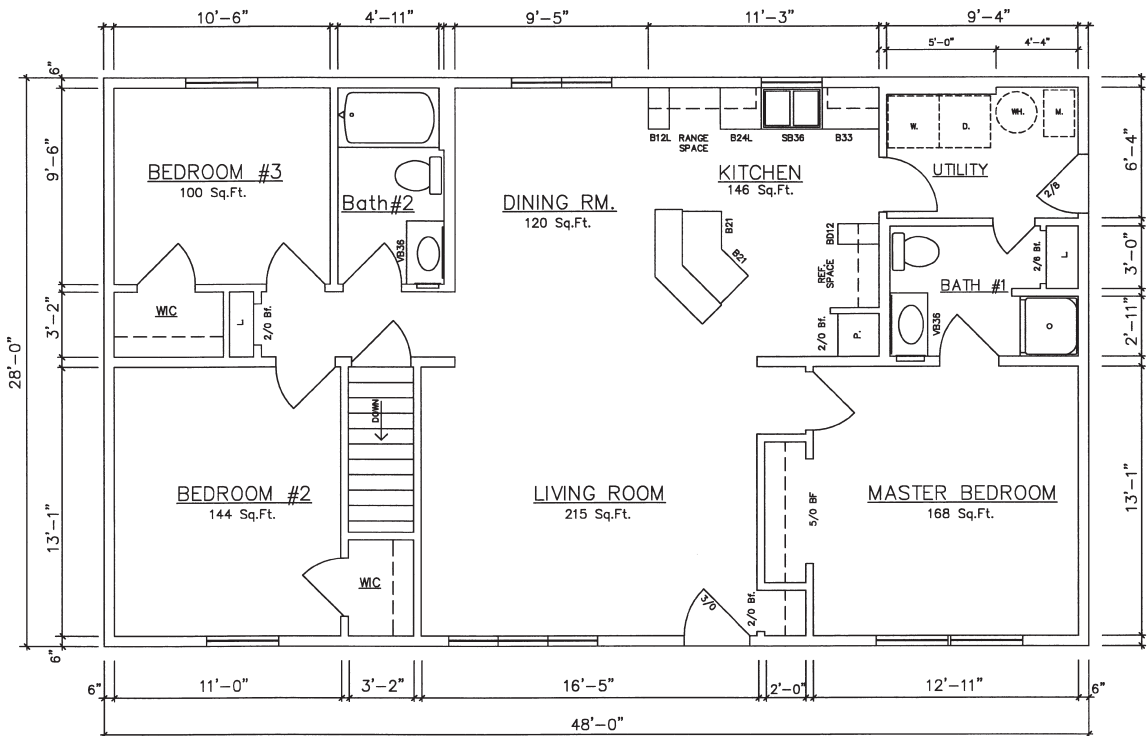


General Housing Corporation
Custom Crafted Construction

Amherst III 48' Models

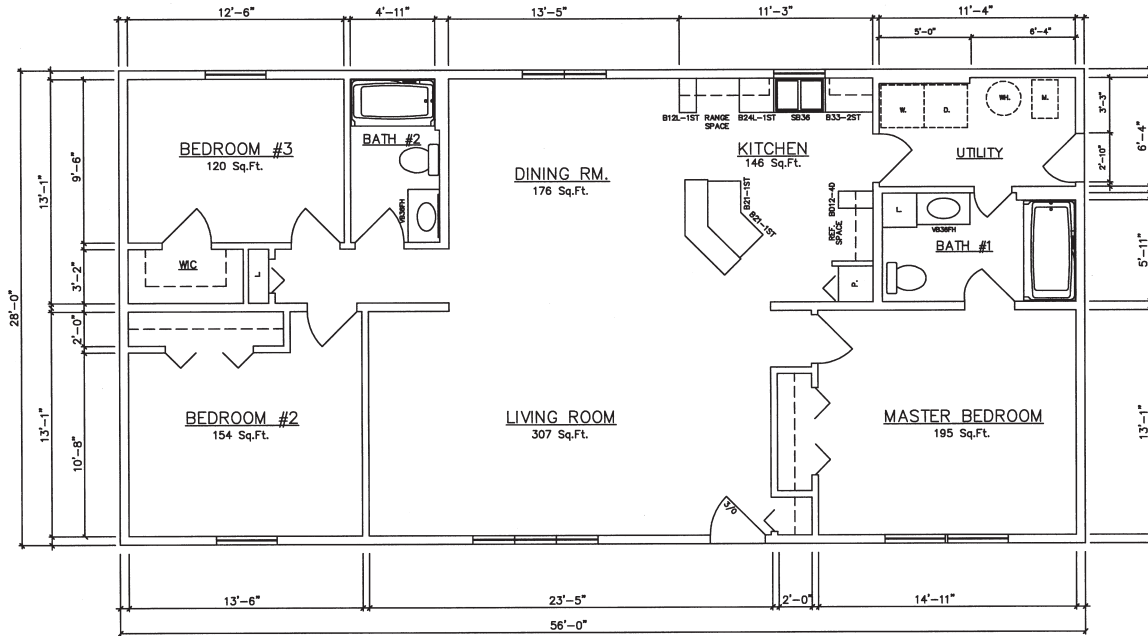


Amherst III 10400 (Center Living Room - Crawlspace) 1,344 Sq. Ft.

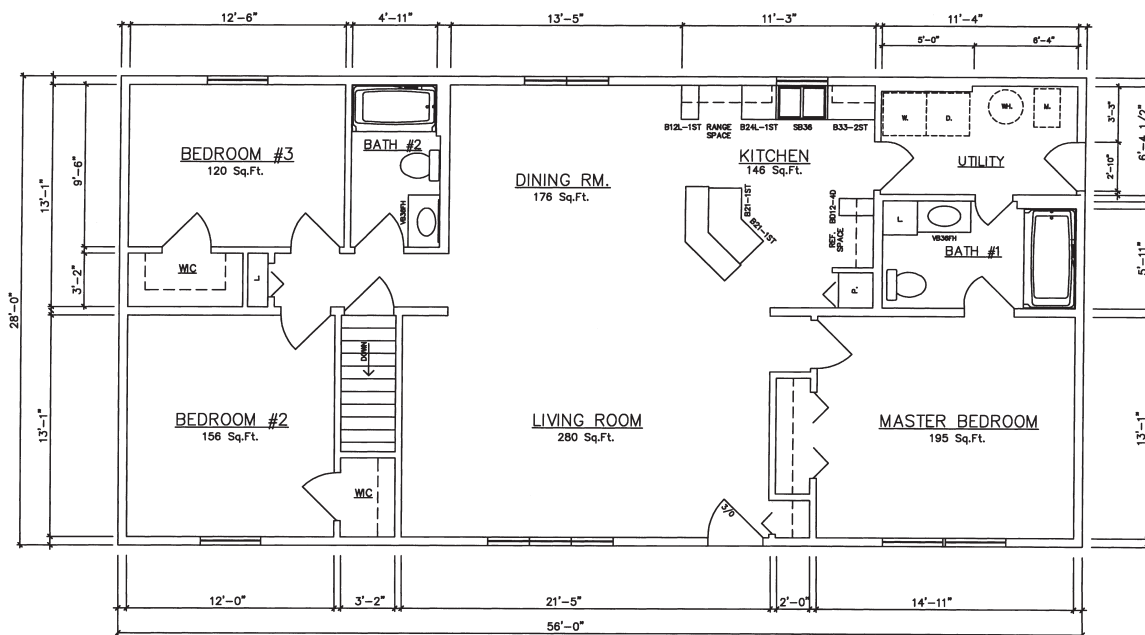


Amherst III 10403 (Center Living Room - Basement) 1,344 Sq. Ft.

Auburn IV 56' Model

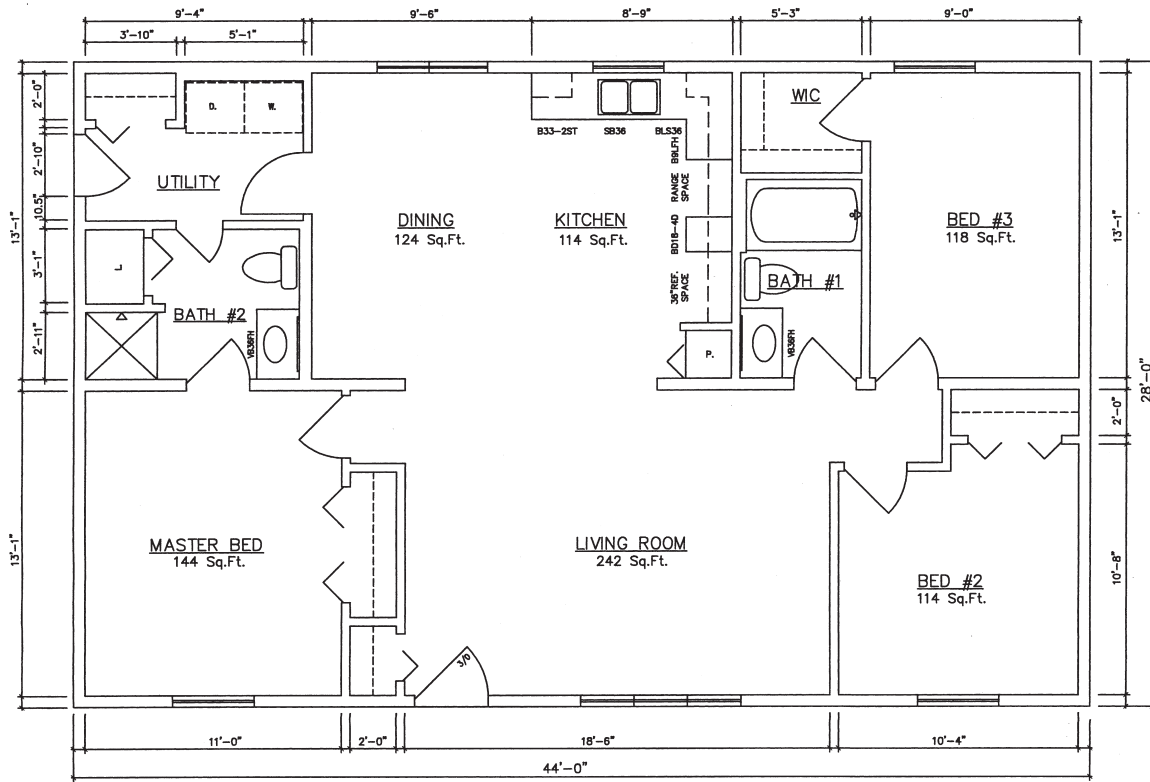


Auburn IV 10432 (Center Living Room - Crawlspace) 1,568 Sq. Ft.

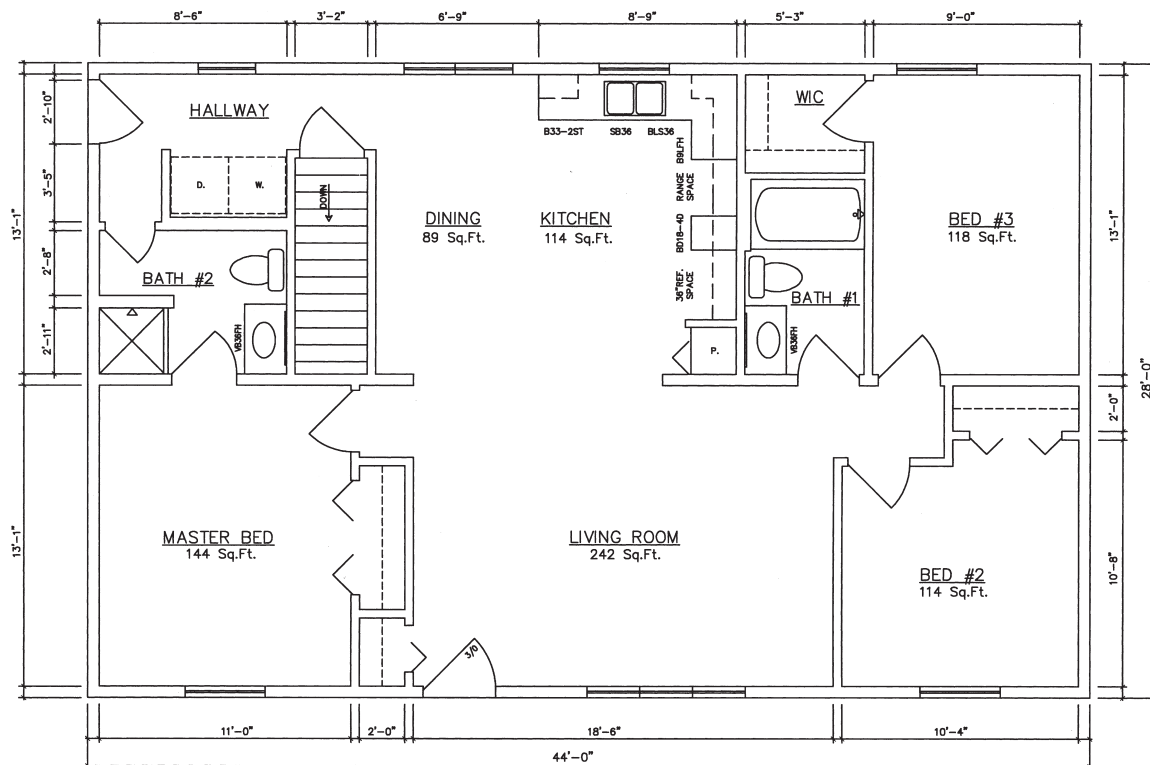


Auburn IV 10434 (Center Living Room - Basement) 1,568 Sq. Ft.

Hamden III 44' Model

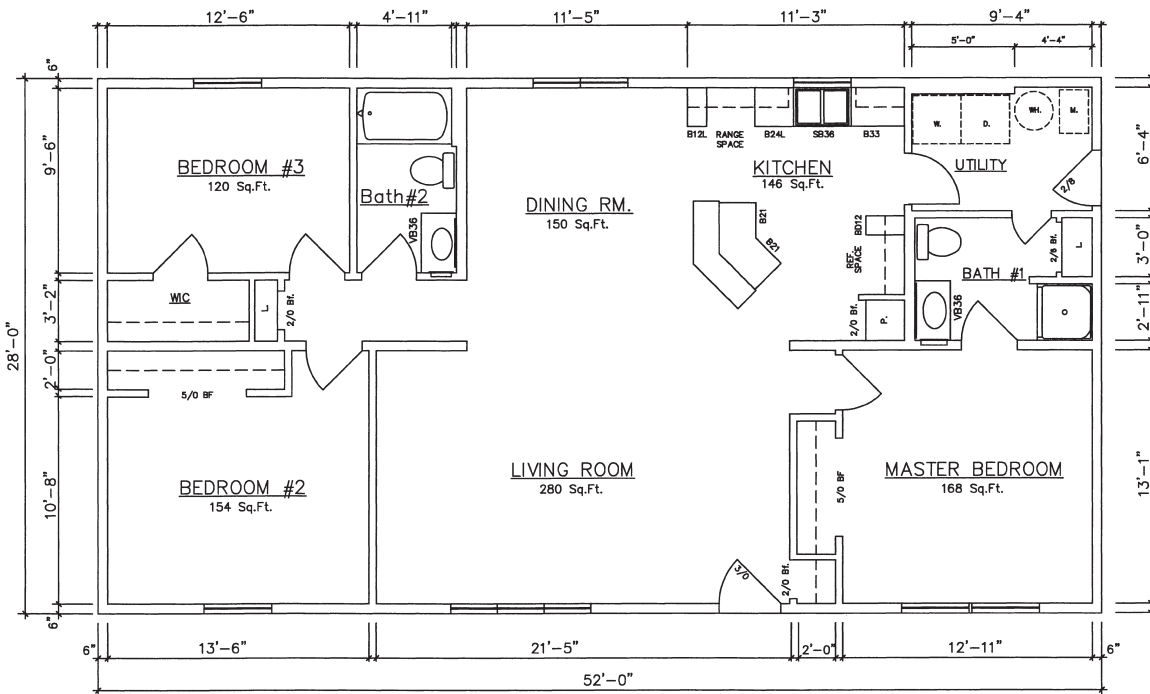


Hamden III 10200 (Center Living Room - Crawlspace) 1,232 Sq. Ft.

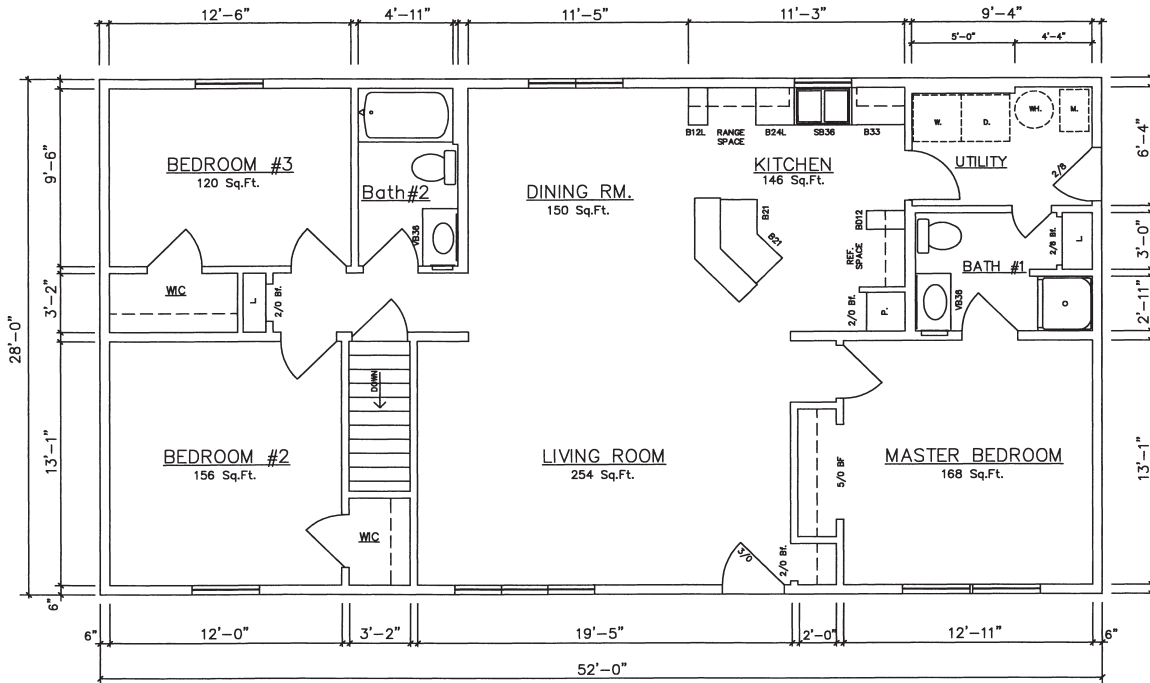


Hamden III 10203 (Center Living Room - Basement) 1,232 Sq. Ft.

Auburn III 52' Models

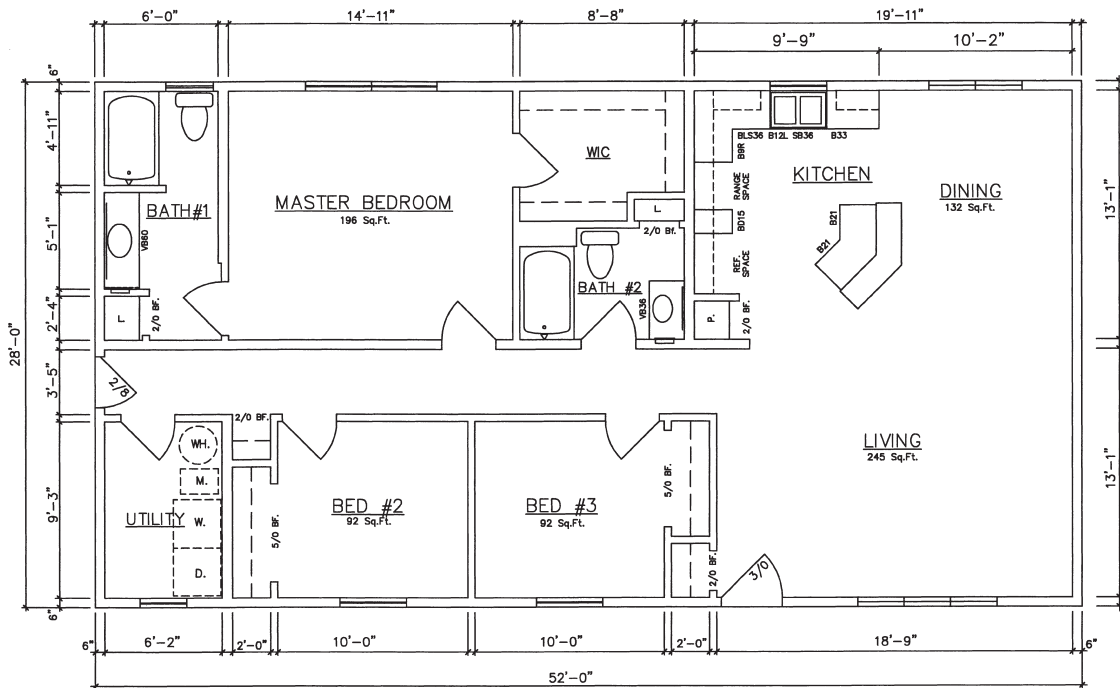


Auburn III 10448 (Center Living Room - Crawlspace) 1,456 Sq. Ft.

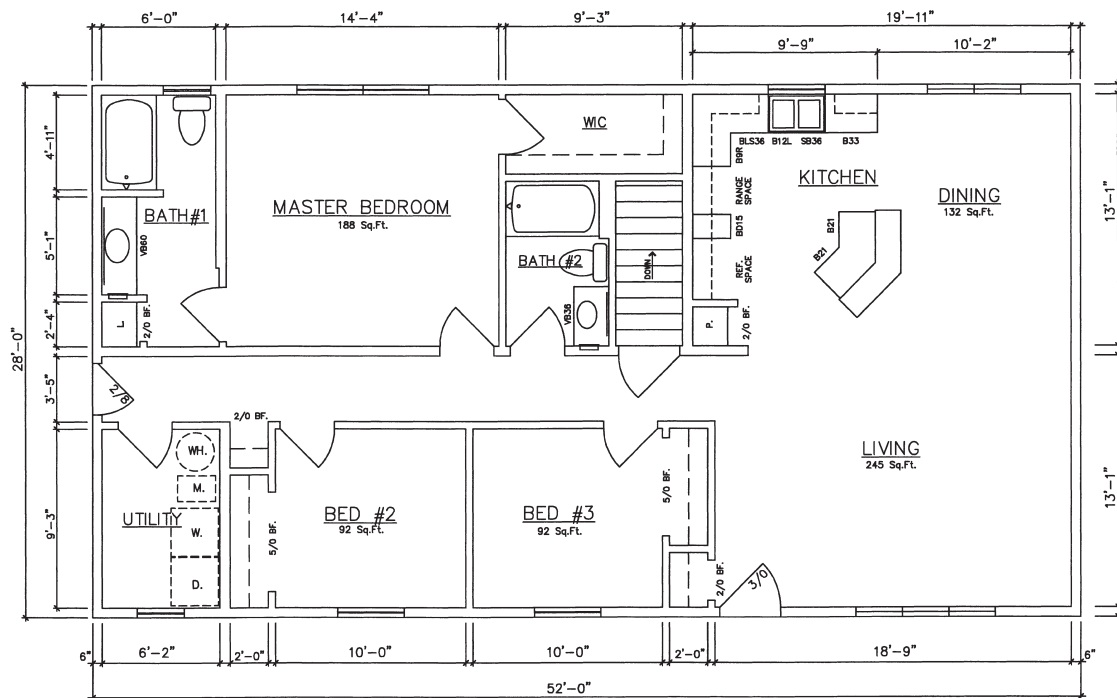


Auburn III 10450 (Center Living Room - Basement) 1,456 Sq. Ft.

Brighton III 52' Models



Brighton III 10338 (Center Kitchen - Crawlspace) 1,456 Sq. Ft.



Brighton III 10340 (Center Kitchen - Basement) 1,456 Sq. Ft.

General Housing Corporation

4650 E. Wilder Road, Bay City, MI 48706 • Phone (800) 351-3664 (989) 684-8078 • Fax (989) 684-2914 • Web Site www.genhouse.com

All prices, specifications and materials are subject to change without notice. Some of the features shown on elevation drawings in the literature may be options.

© 2019 General Housing Corp. R11 - 03/19