

*Ranch*  
*1,344-1,792 sq. ft.*

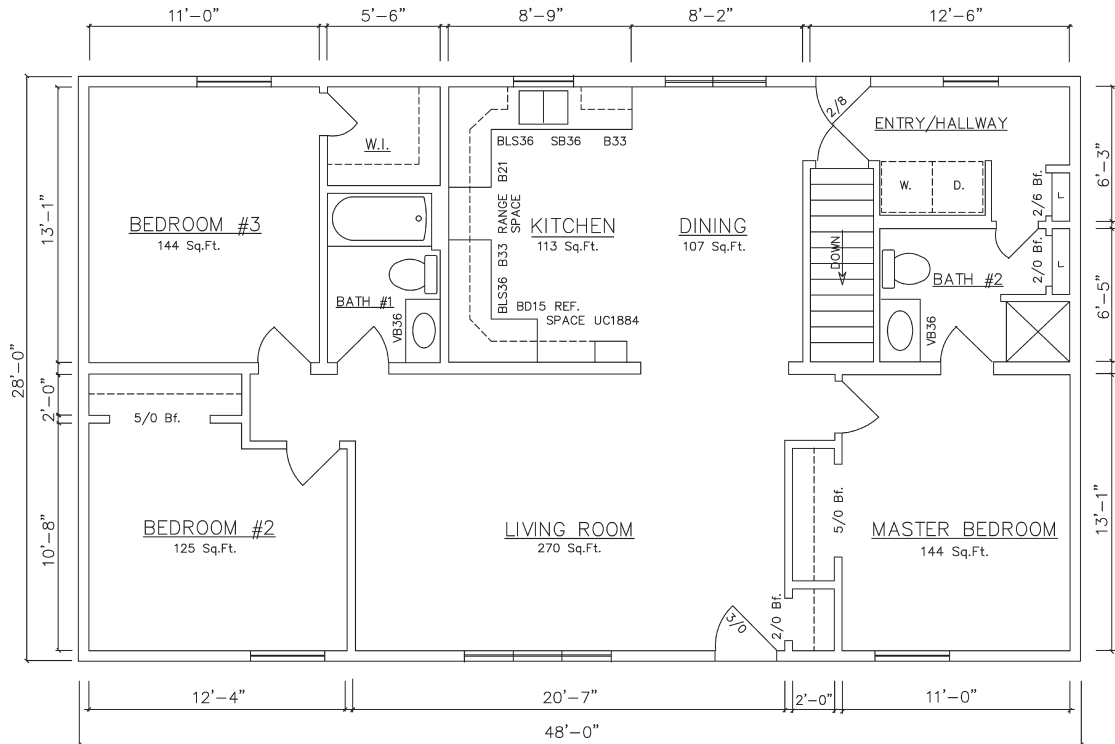
*Amherst • Bristol • Ludington II  
Auburn • Brighton • Ludington  
Charlotte • Chelsea • Manchester  
Northport • Grayling • Kingston  
Manistee • Marshall • Chesaning*



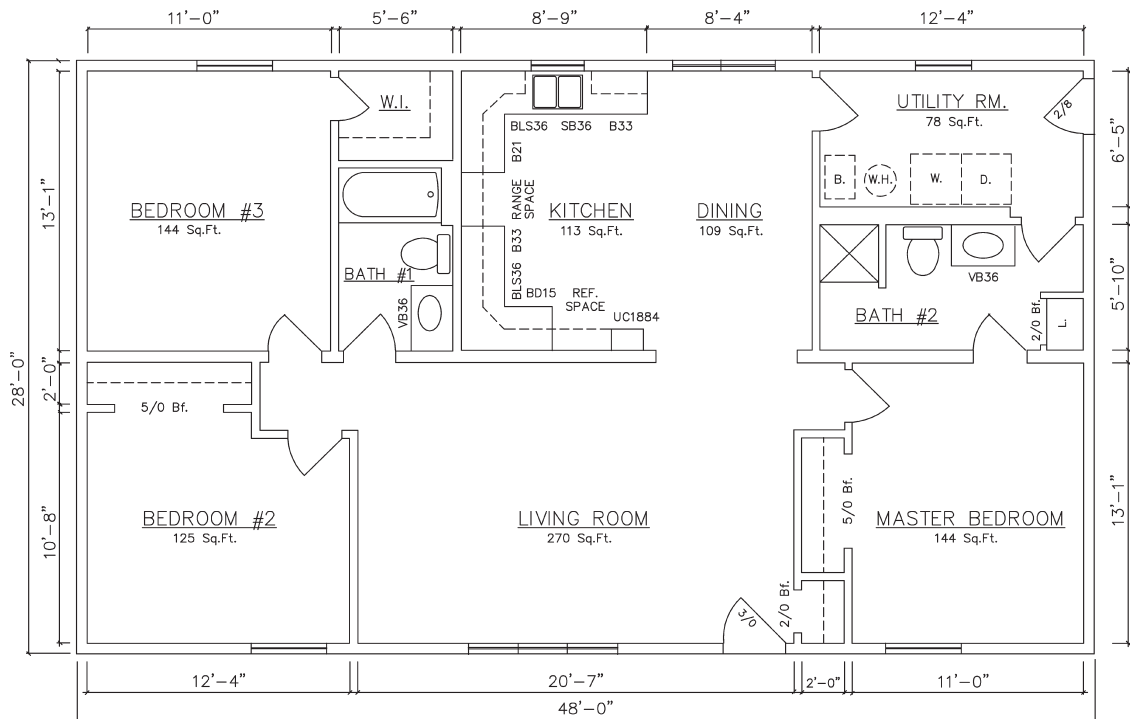
**General Housing Corporation**  
*Custom Crafted Construction*

# Amherst 48' Models

1,344 sq. ft. for Amherst 48' Models



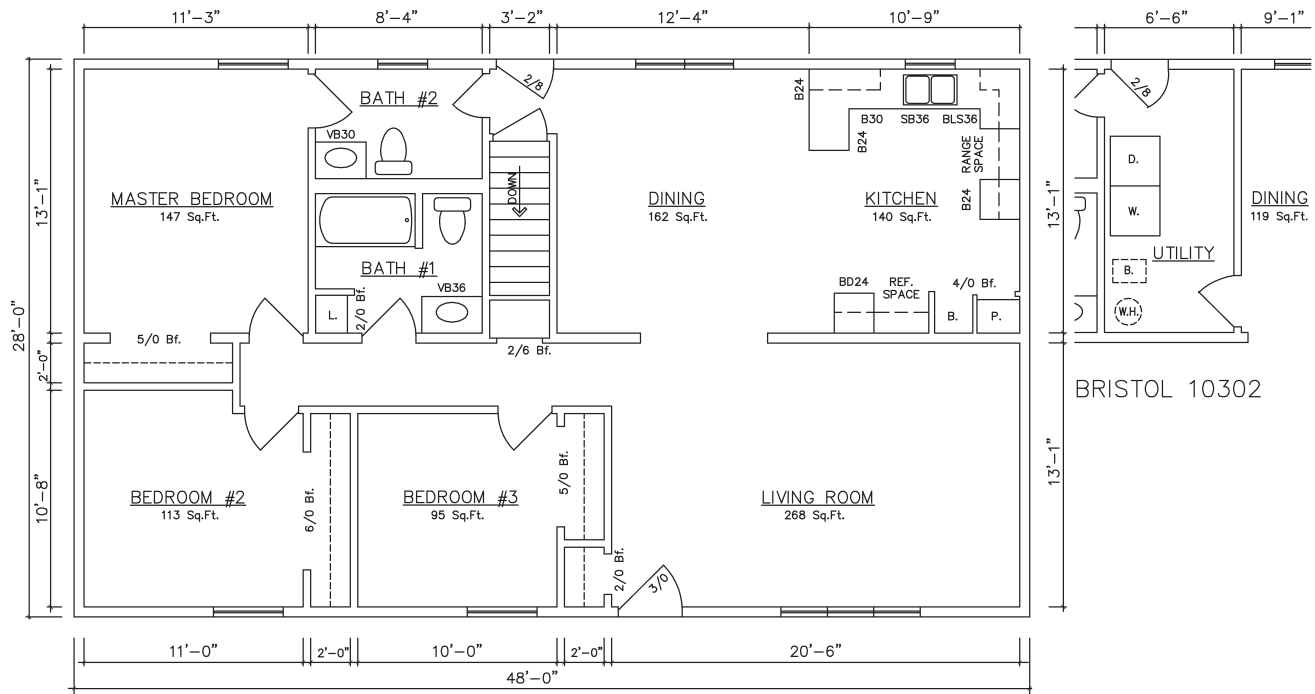
Amherst 10407 (Center Living Room - 1st Laundry Room - Basement)



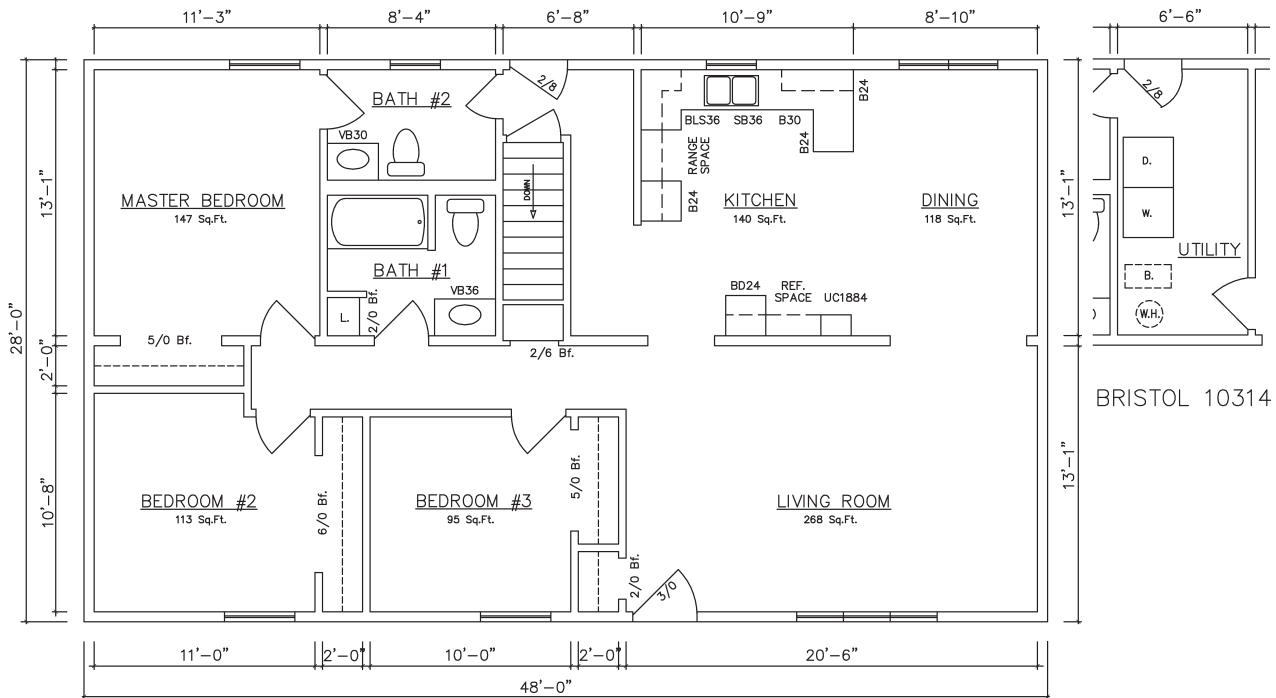
Amherst 10402 (Center Living Room - Crawlspace)

# Bristol 48' Models

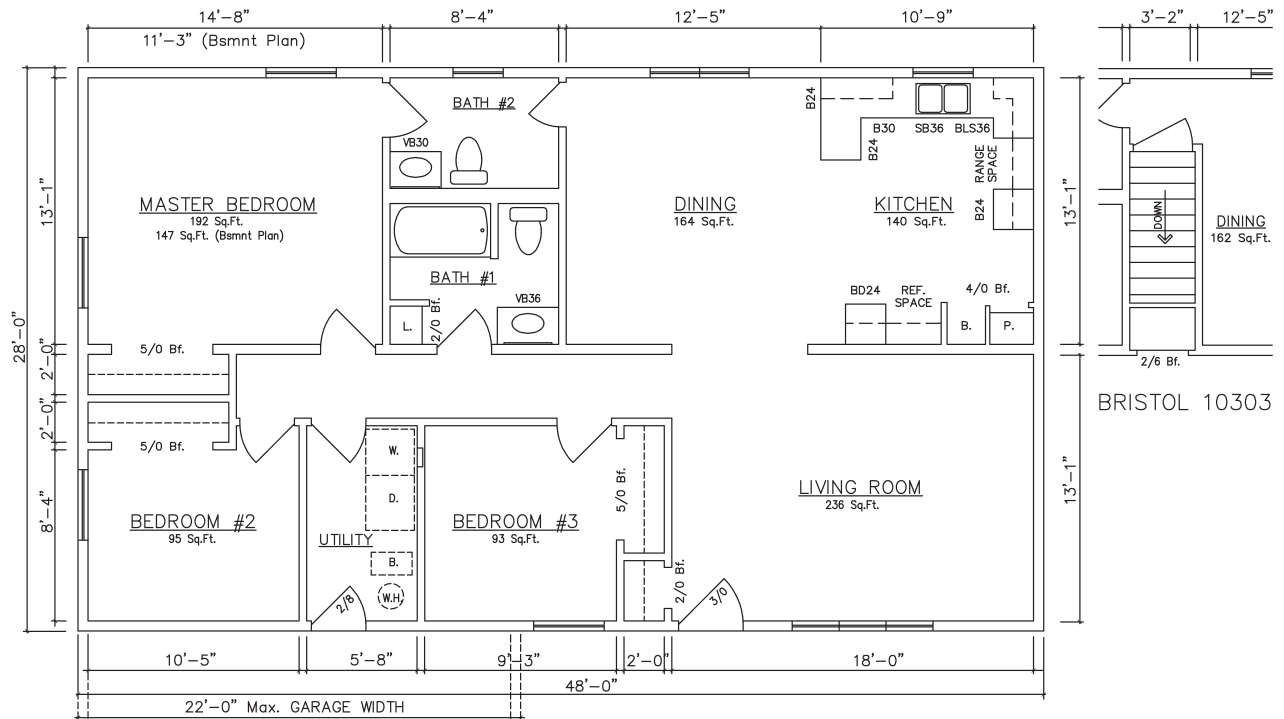
1,344 sq. ft. for Bristol 48' Models



Bristol 10304 (End Kitchen - Basement)  
 10302 (End Kitchen - Crawlspace) - see inset



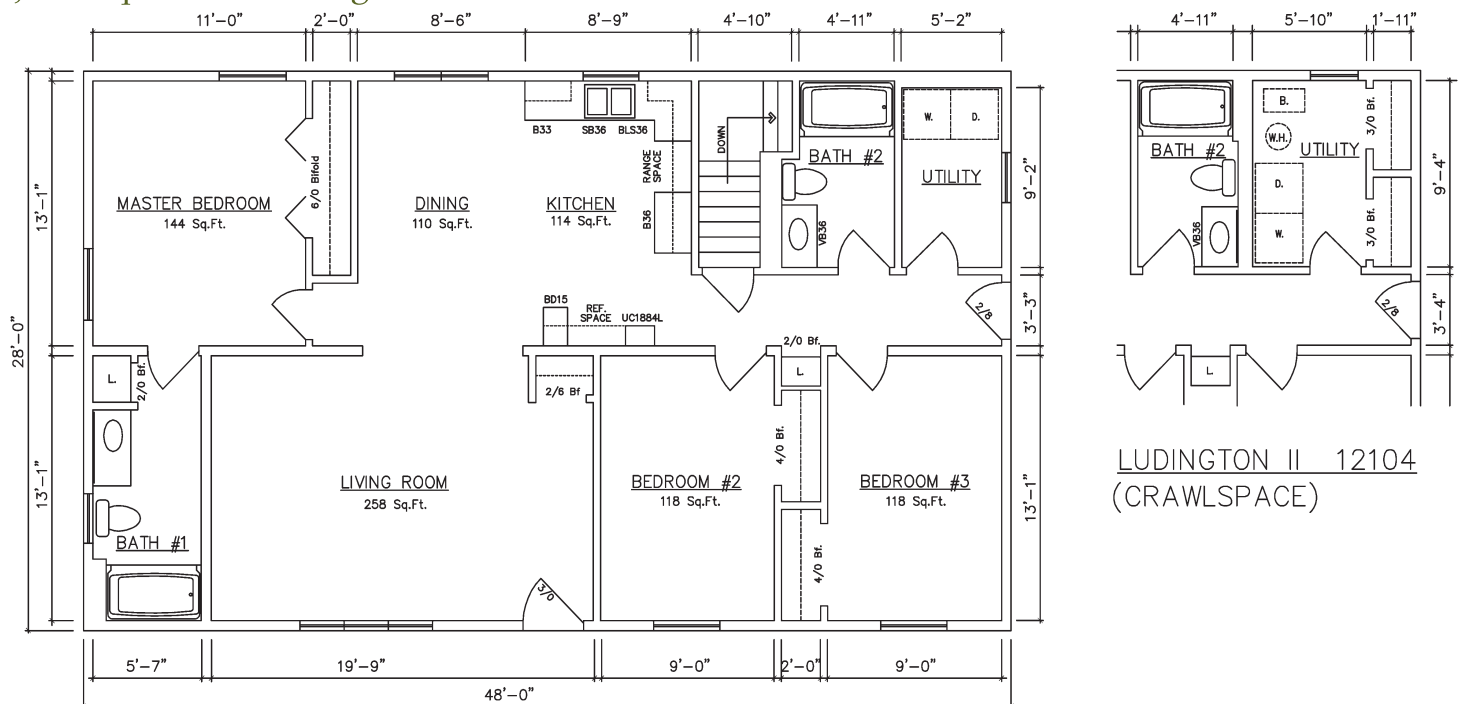
Bristol 10316 (Center Kitchen - Basement)  
 10314 (Center Kitchen - Crawlspace) - see inset



Bristol 10307 (Front Garage - Crawlspace)  
10303 (Front Garage - Basement) - see inset

# Ludington II 48' Models

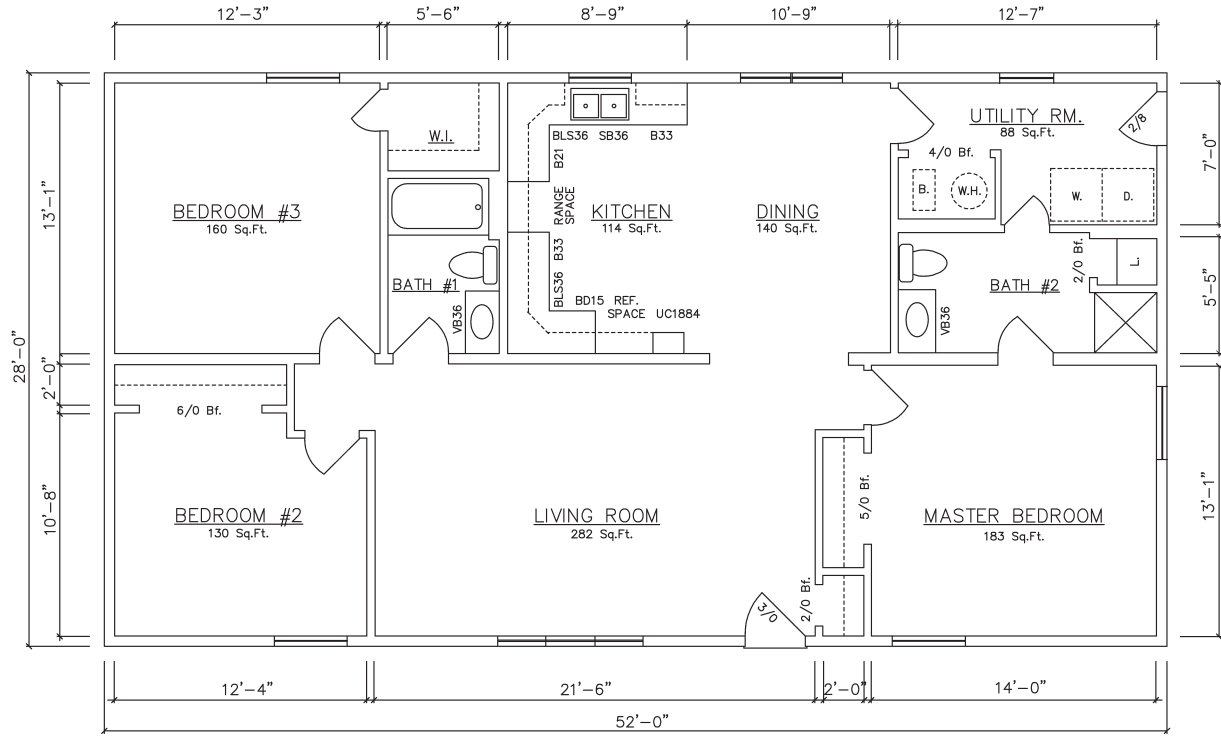
1,344 sq. ft. for Ludington II 48' Models



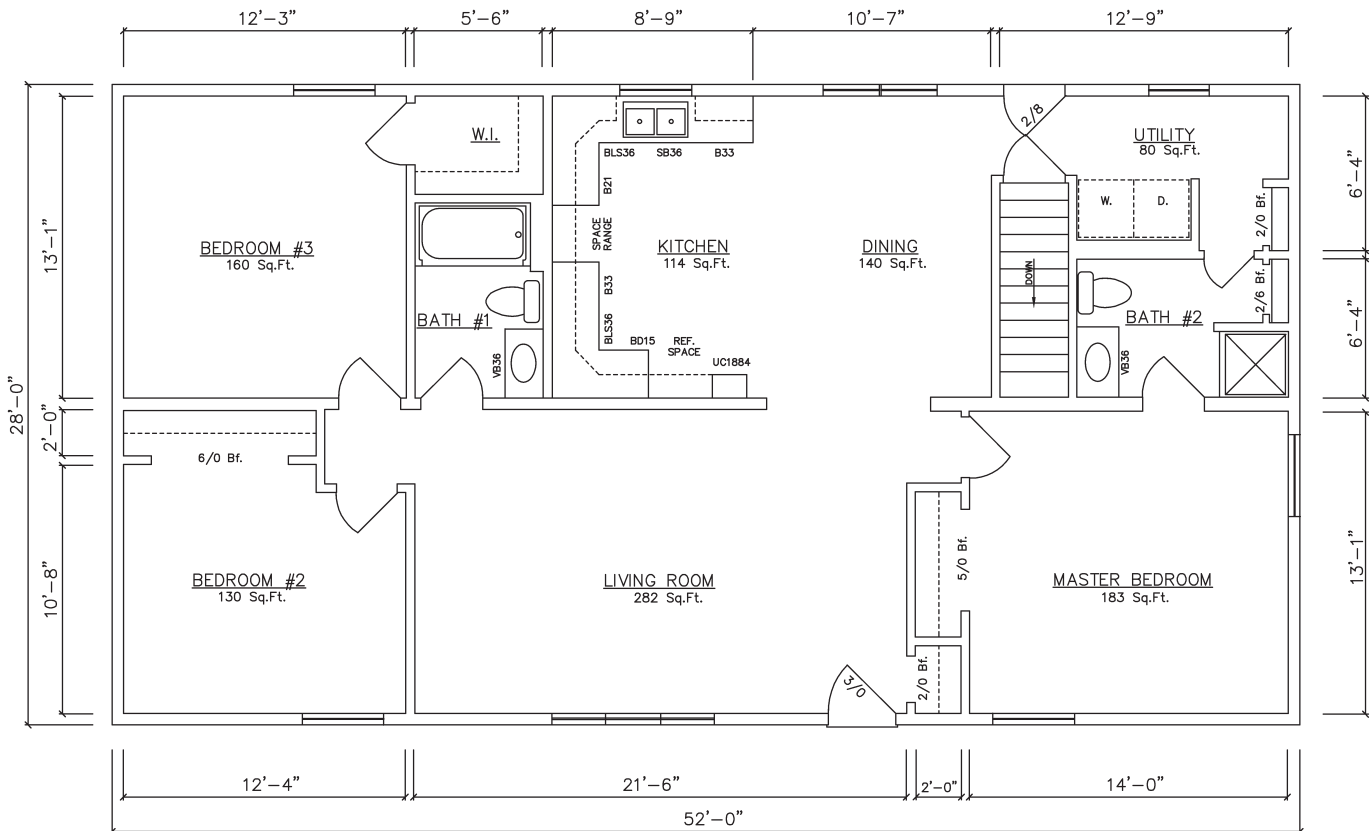
Ludington II 12106 (Basement)  
12104 (Crawlspace) - see inset

# Auburn 52' Models

1,456 sq. ft. for Auburn 52' Models



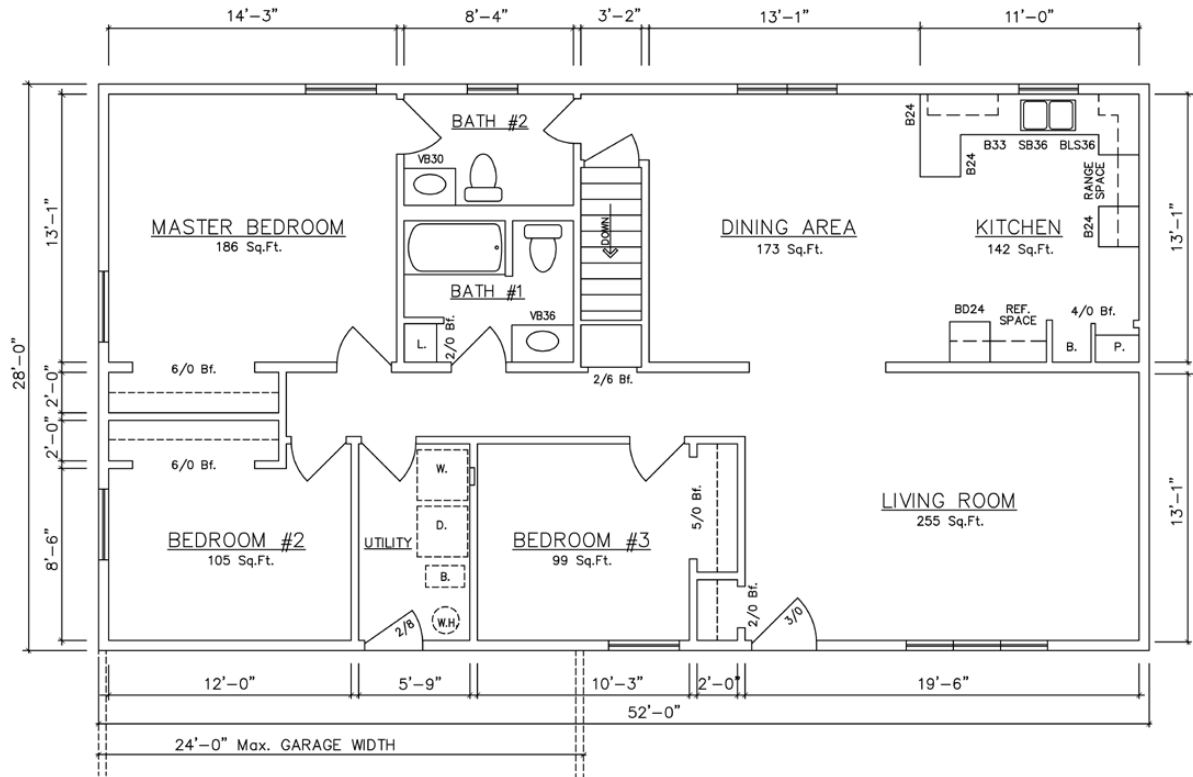
Auburn 10422 (Center Living Room - Crawlspace)



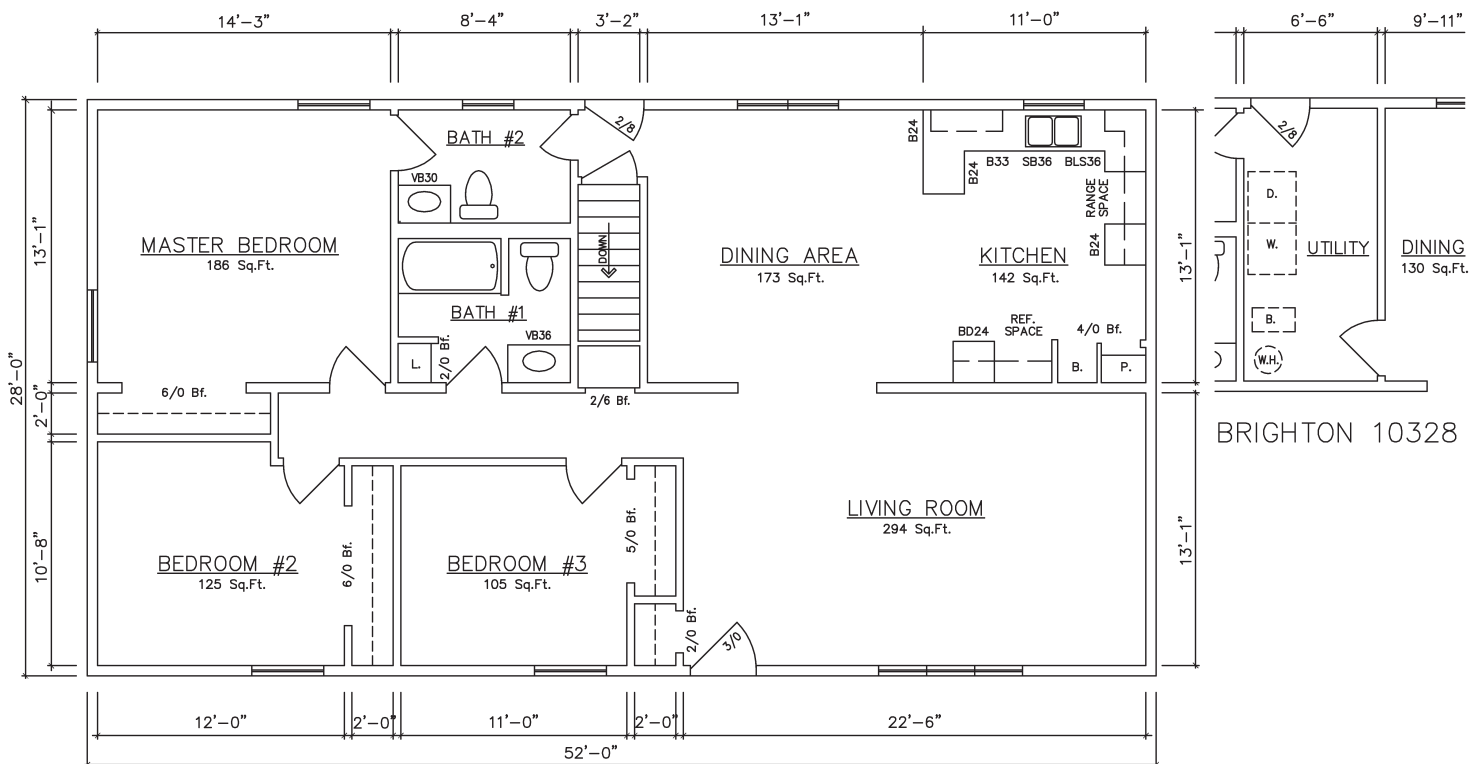
Auburn 10428 (Center Living Room - 1st Floor Laundry Room - Basement)

# Brighton 52' Models

1,456 sq. ft. for Brighton 52' Models



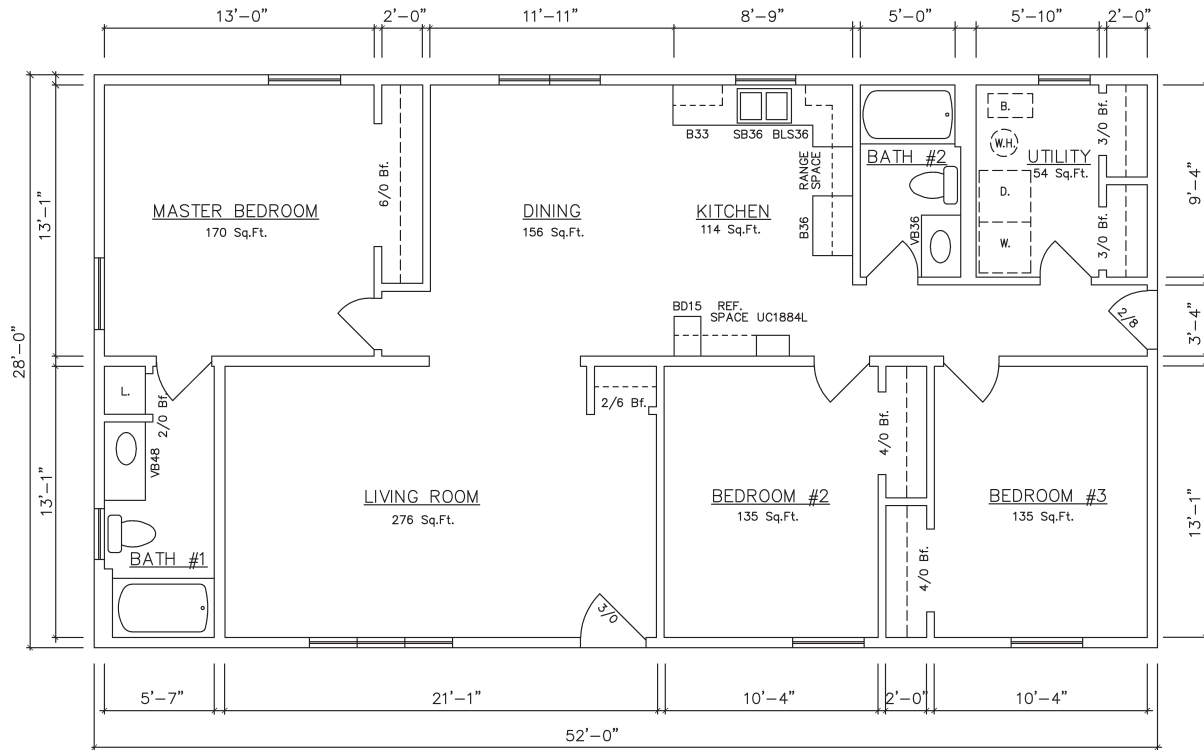
Brighton 10334 (End Kitchen - Front Load Garage - Basement)



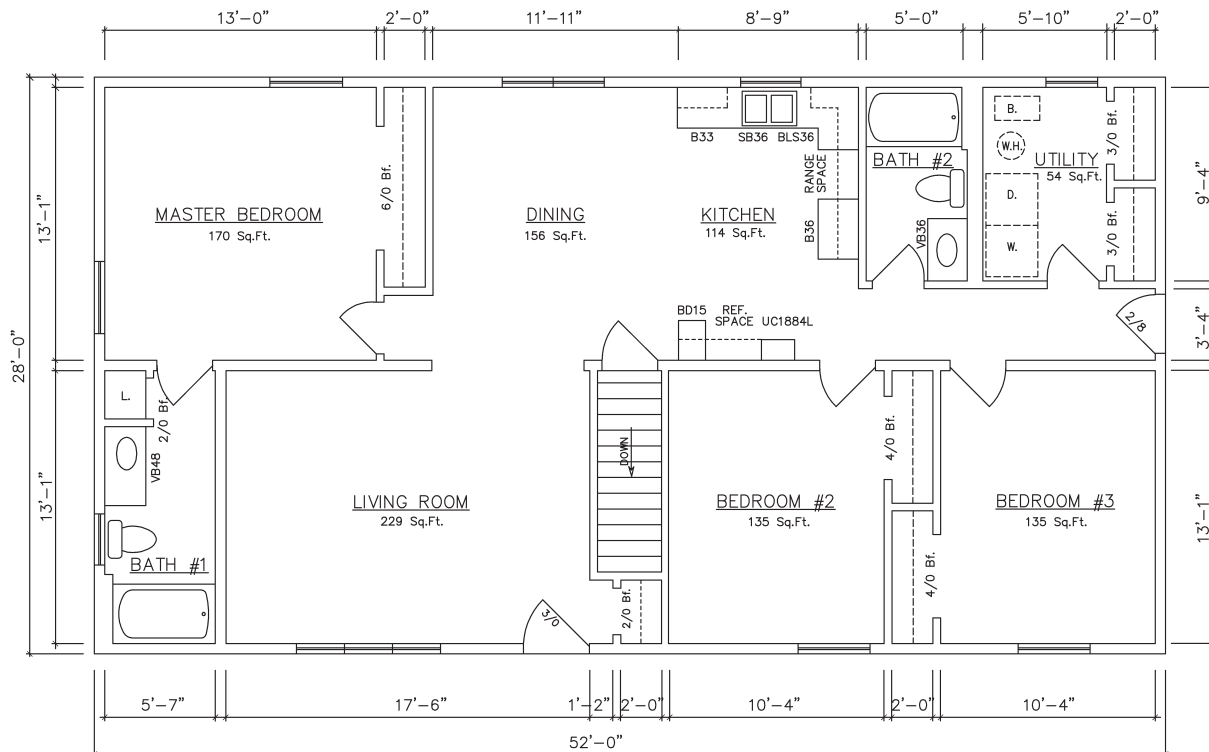
Brighton 10326 (End Kitchen - Basement)  
10328 (End Kitchen - Crawlspace) - see inset

# Ludington 52' Models

1,456 sq. ft. for Ludington 52' Models



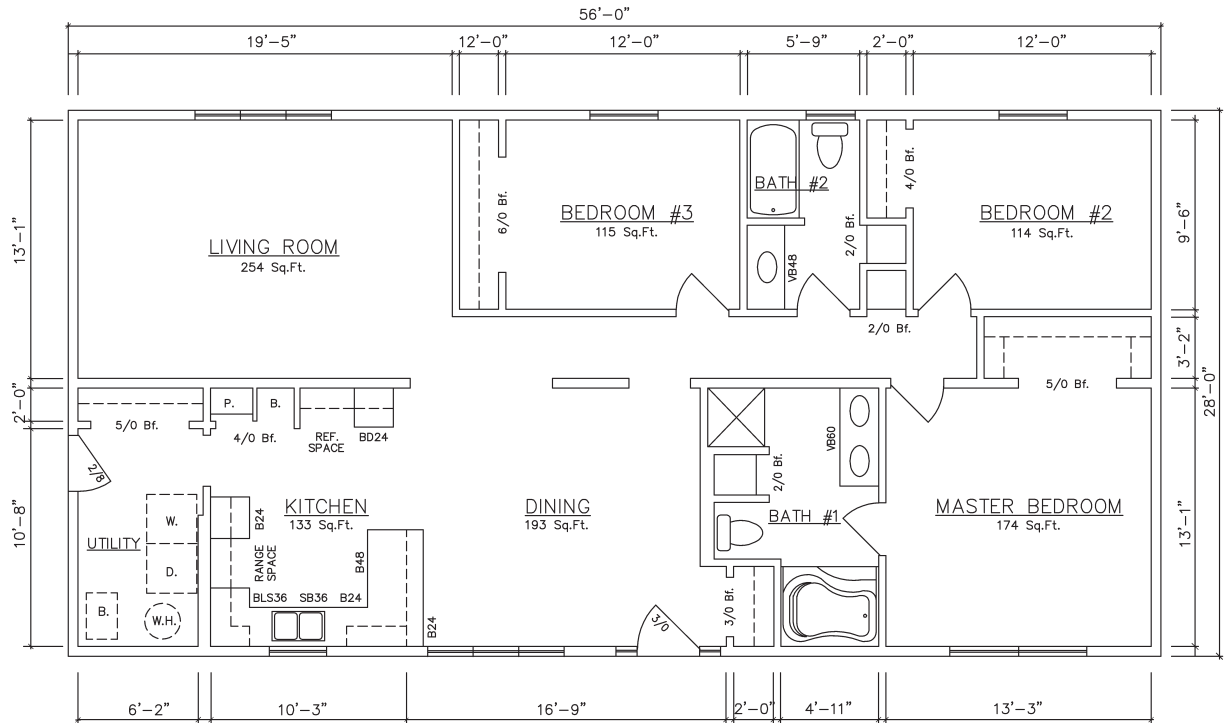
Ludington 12100 (Crawlspace)



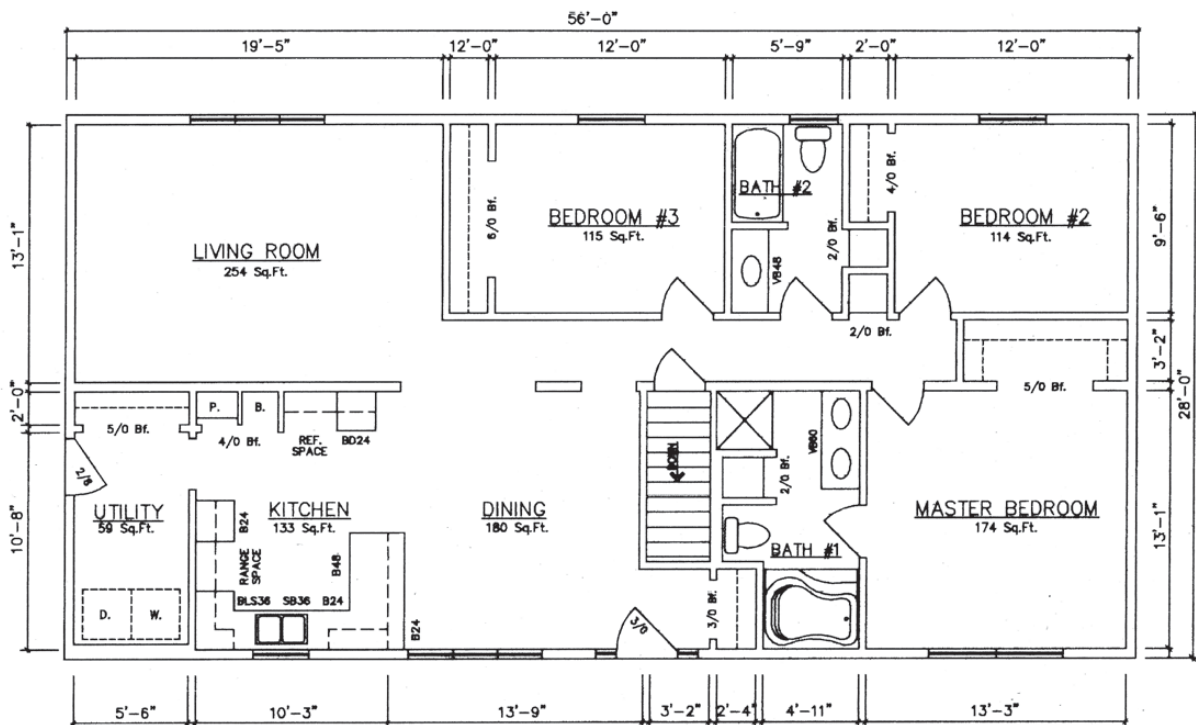
Ludington 12102 (Basement)

# Charlotte 56' Model

1,568 sq. ft. for Charlotte 56' Models



Charlotte 10488 (Crawlspace)

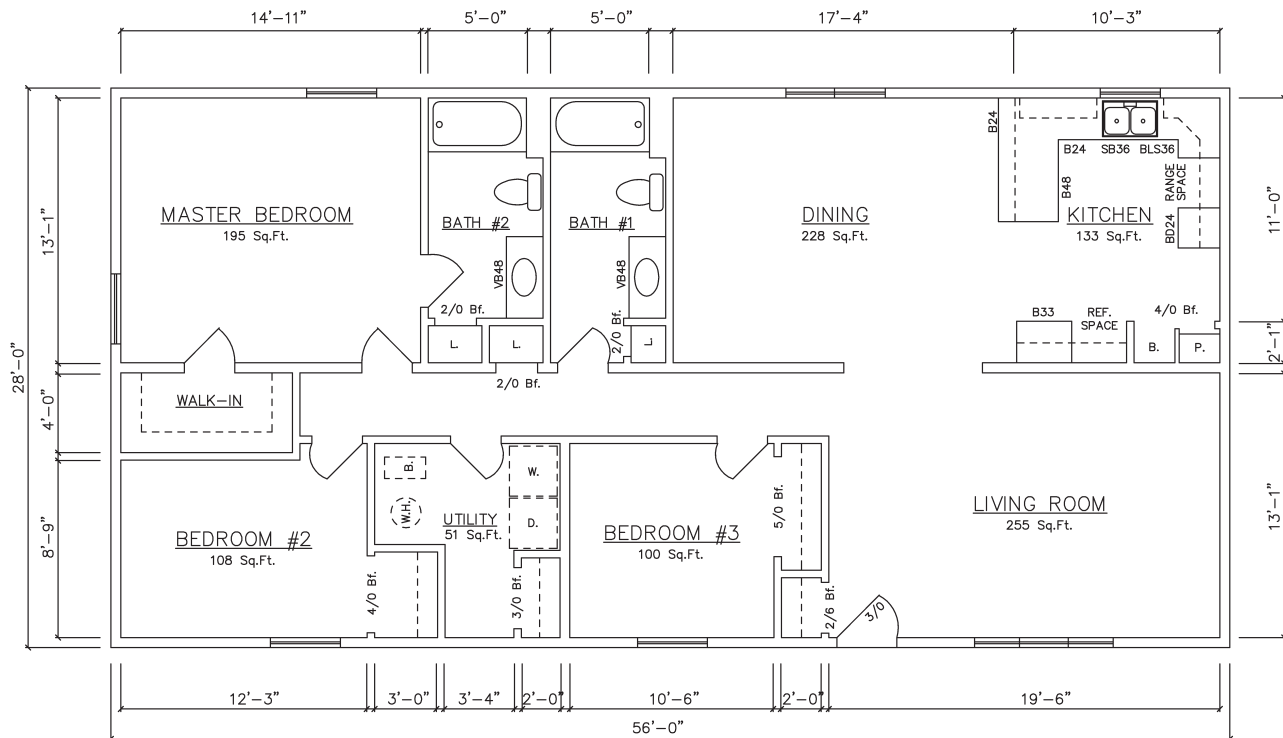


Charlotte 14090 (Basement)

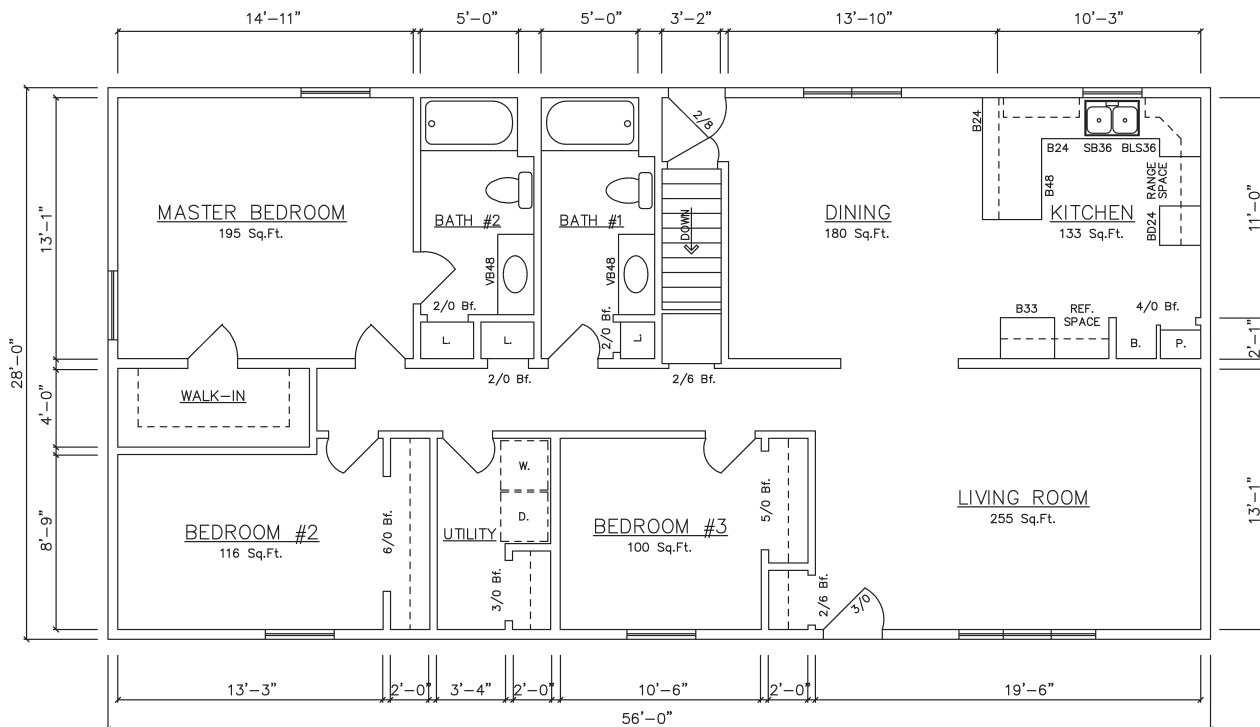


# Chelsea 56' Models

1,568 sq. ft. for Chelsea 56' Models

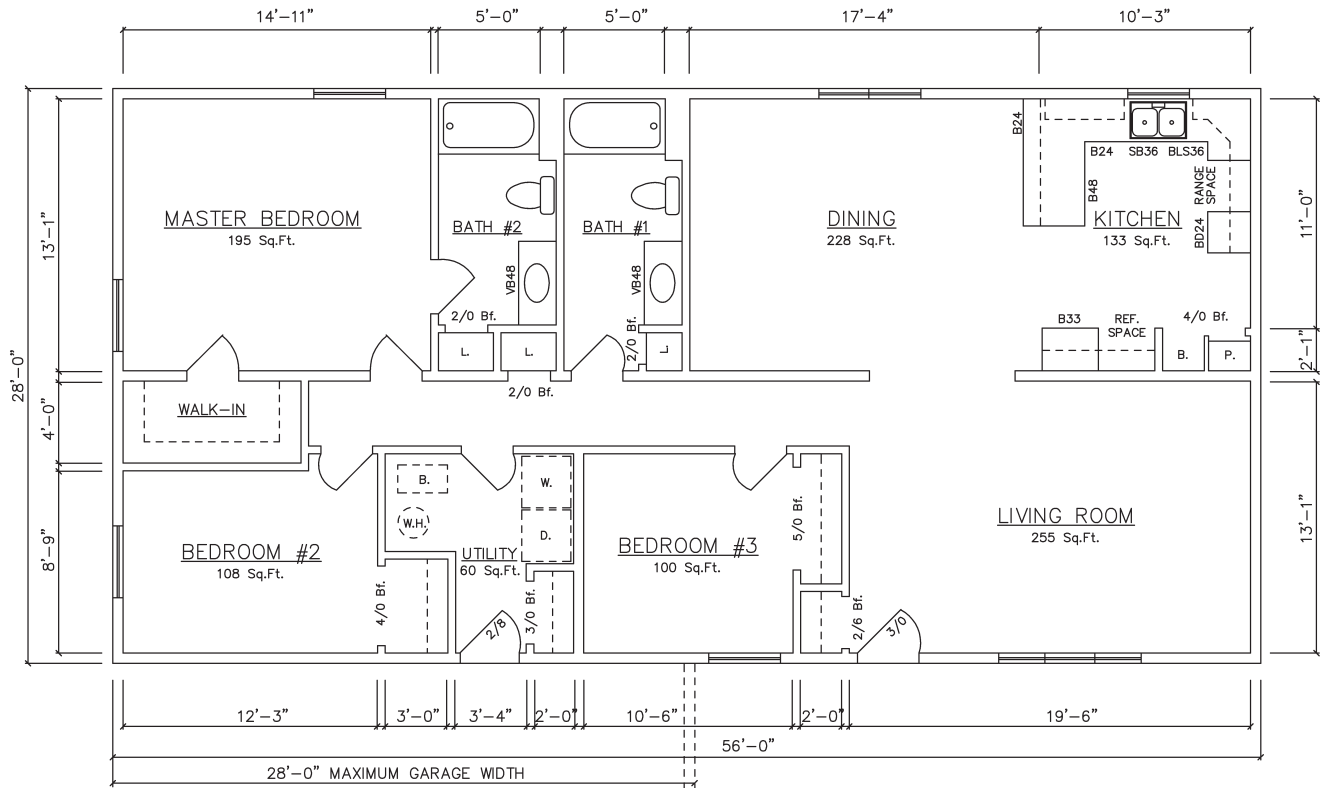


Chelsea 10482 (End Kitchen - Crawlspace)

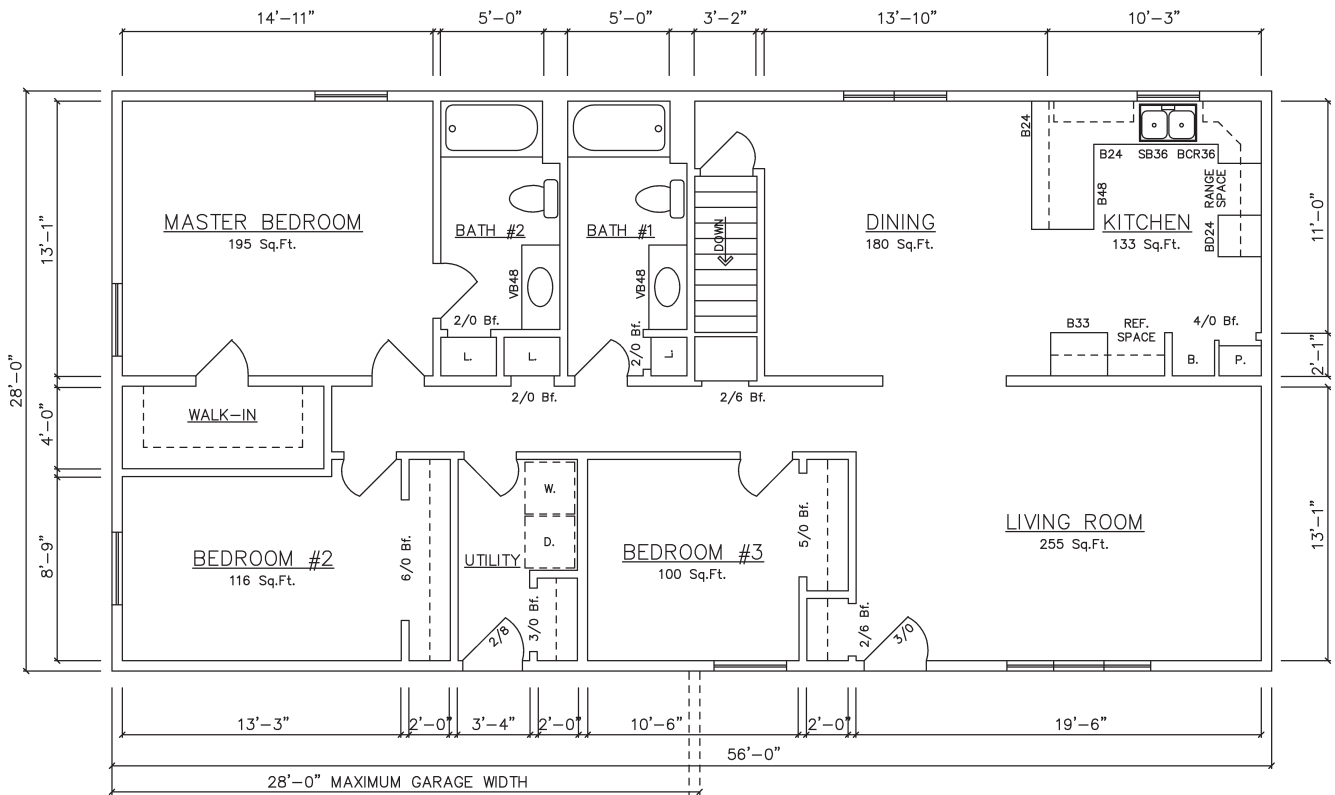


Chelsea 10480 (End Kitchen - Basement)

# Chelsea 56' Models



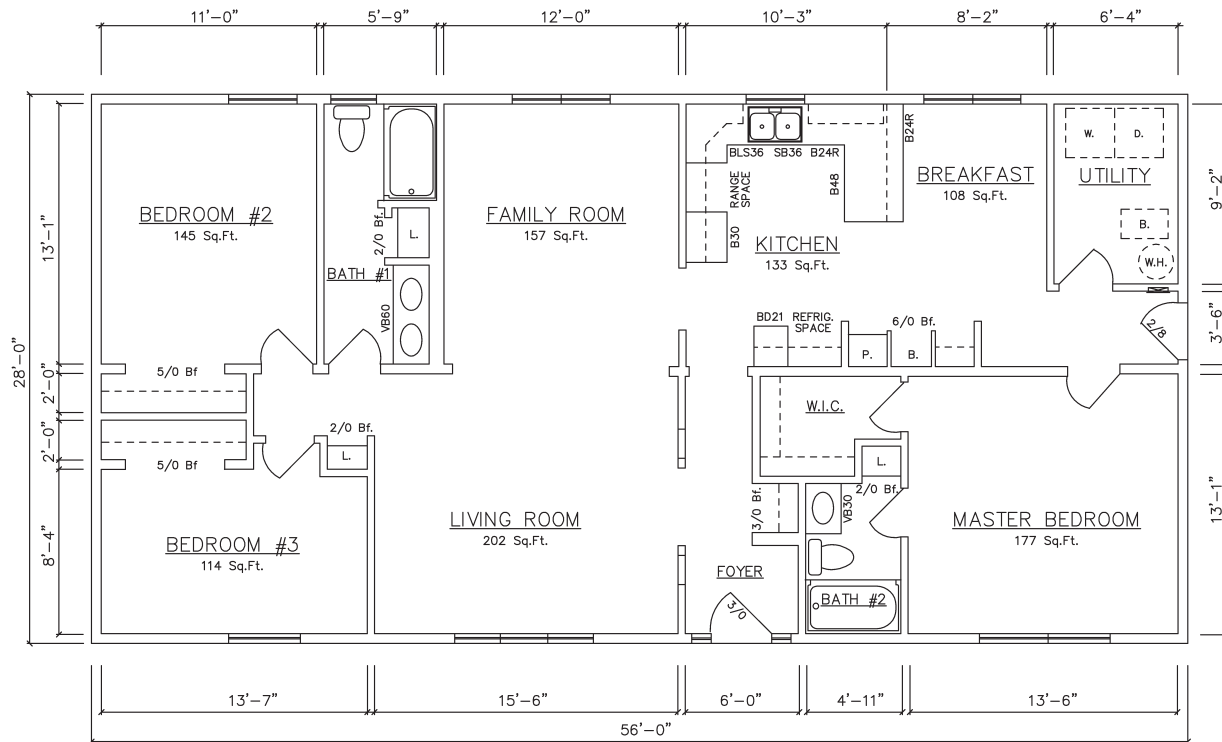
Chelsea 10482FLG (End Kitchen - Crawlspace - Front Load Garage)



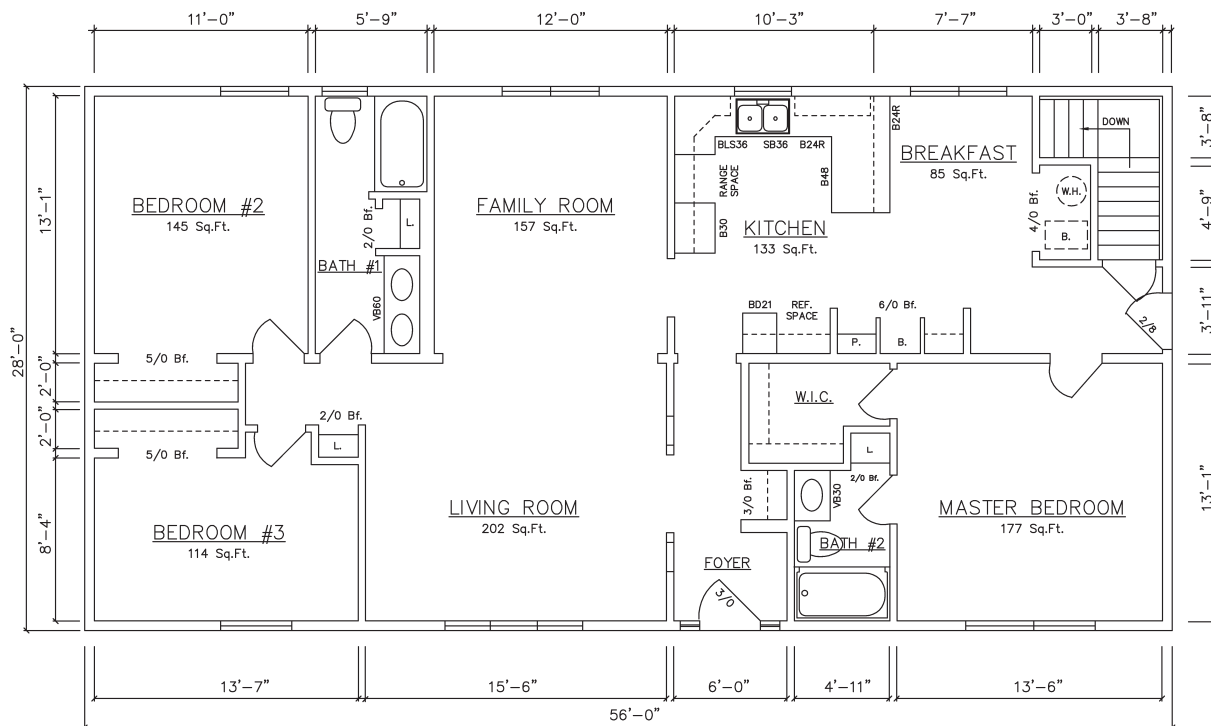
Chelsea 10480FLG (End Kitchen - Basement - Front Load Garage)

# Manchester 56' Models

1,568 sq. ft. for Manchester 56' Models



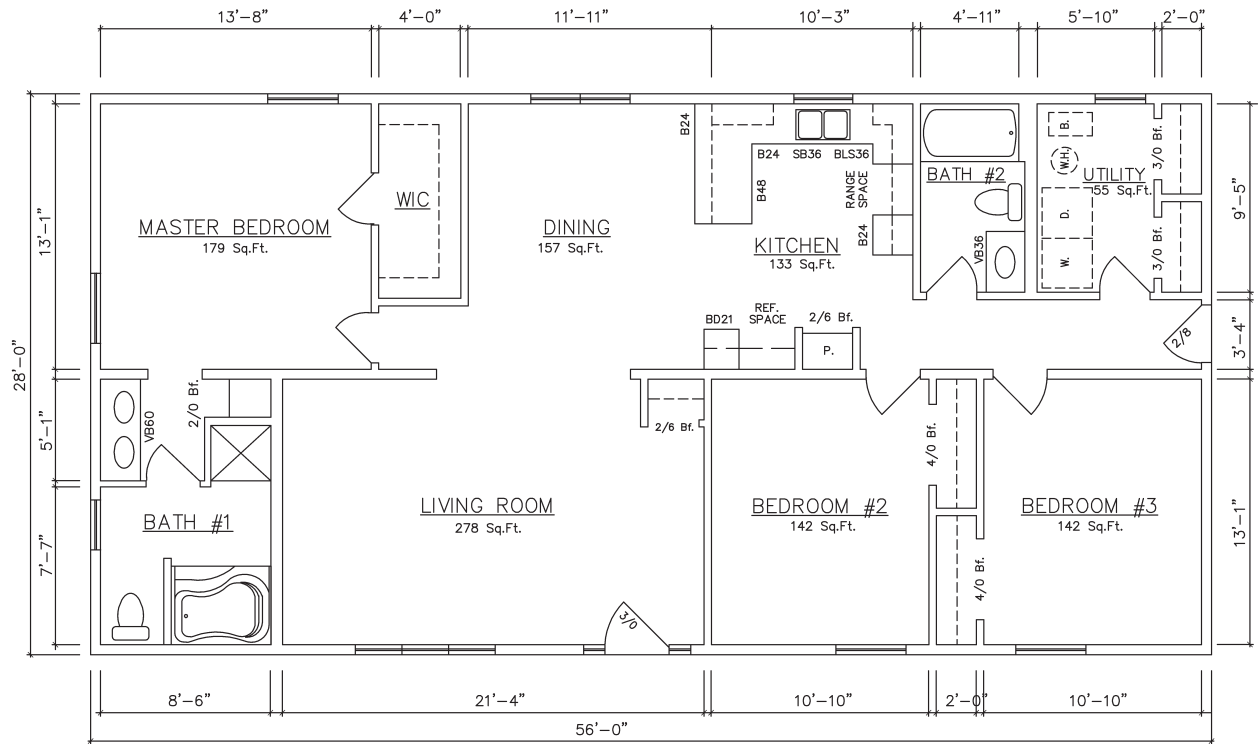
Manchester 10382 (Center Living Room - Crawlspace)



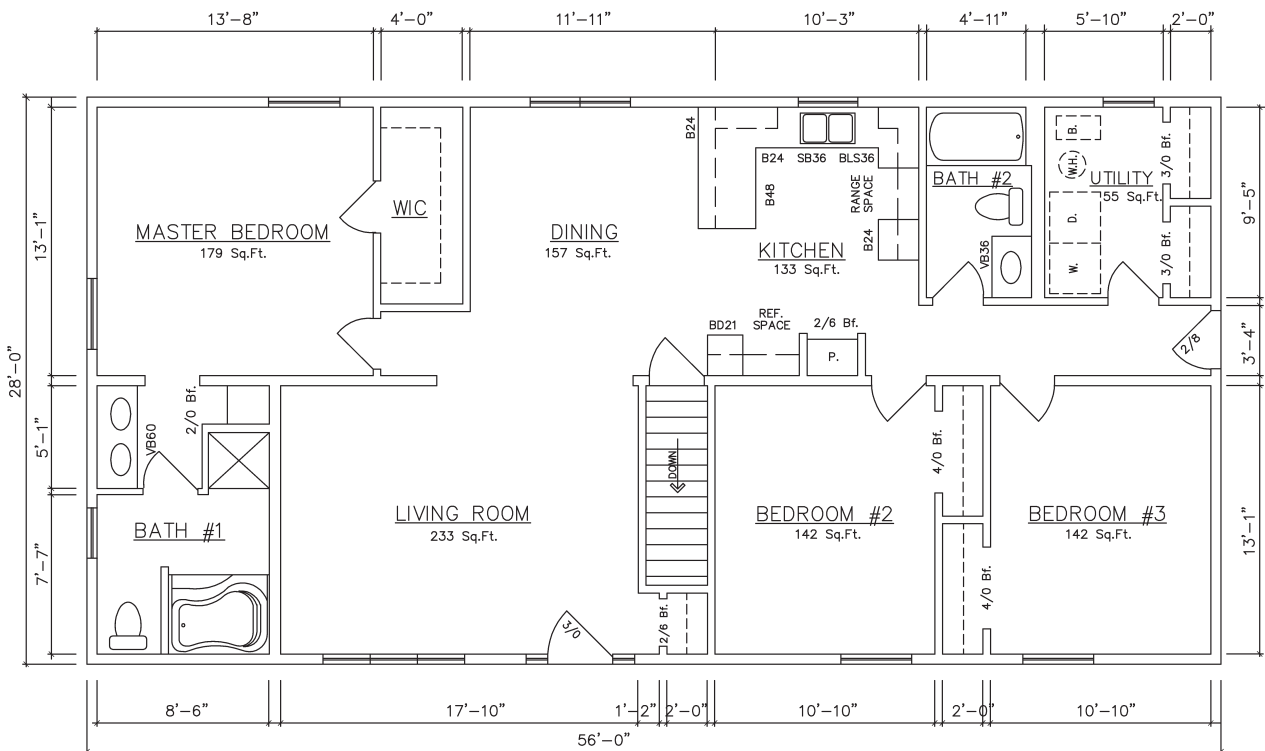
Manchester 10380 (Center Living Room - Basement)

# Northport 56' Models

1,568 sq. ft. for Northport 56' Models



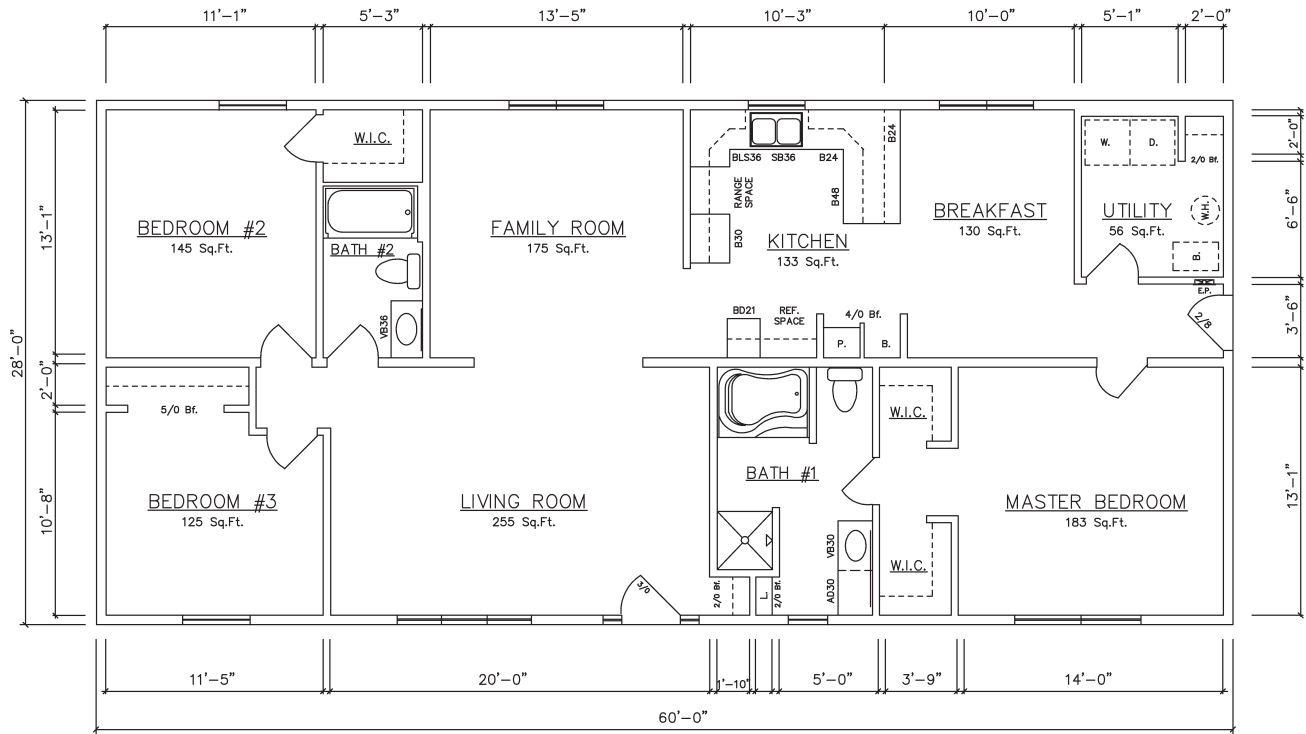
## Northport 10494 (Crawlspace)



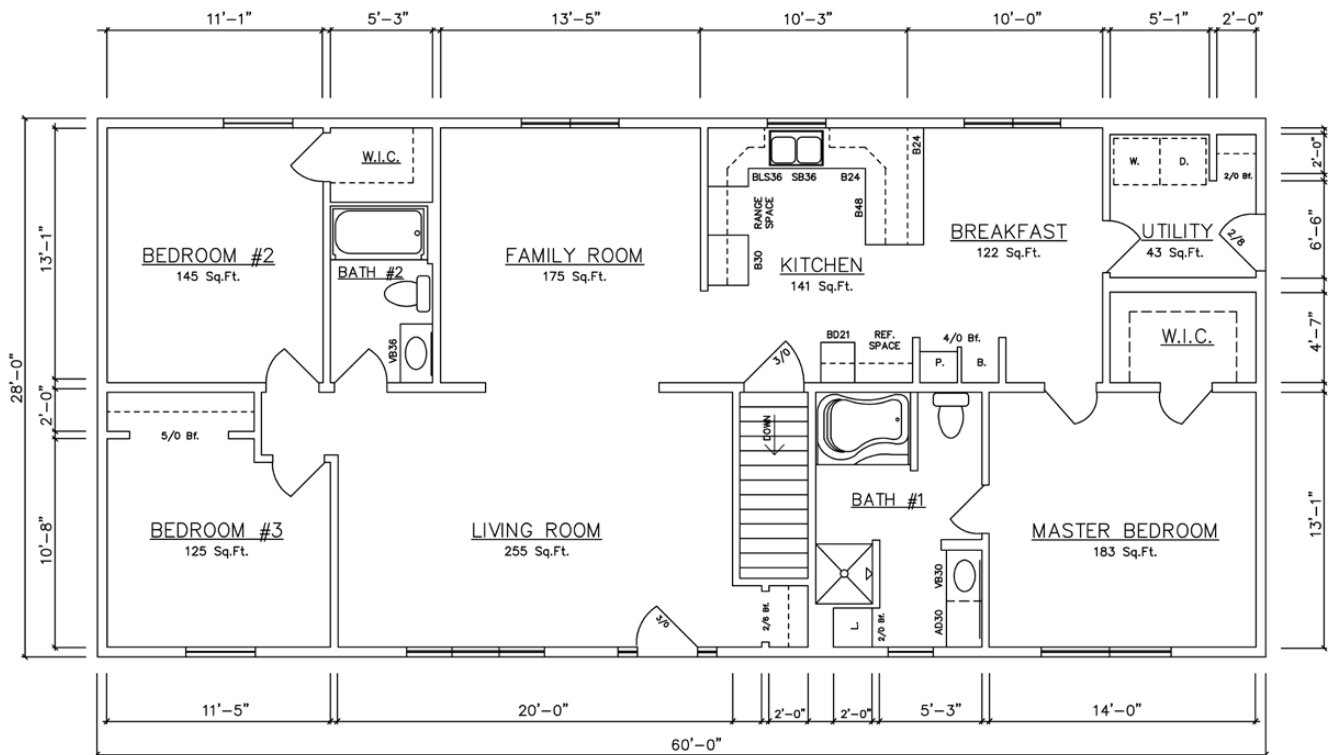
## Northport 10492 (Basement)

# Grayling 60' Models

1,680 sq. ft. for Grayling 60' Models



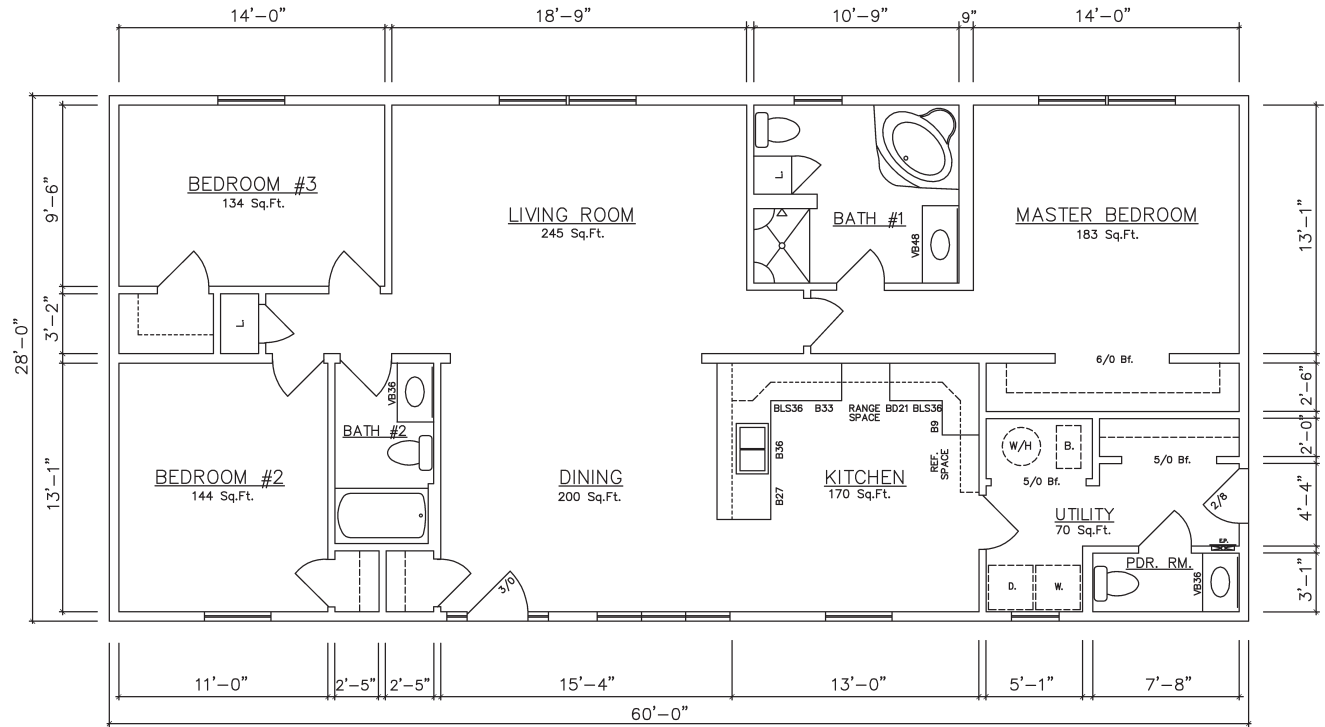
Grayling 10544 (Crawlspace)



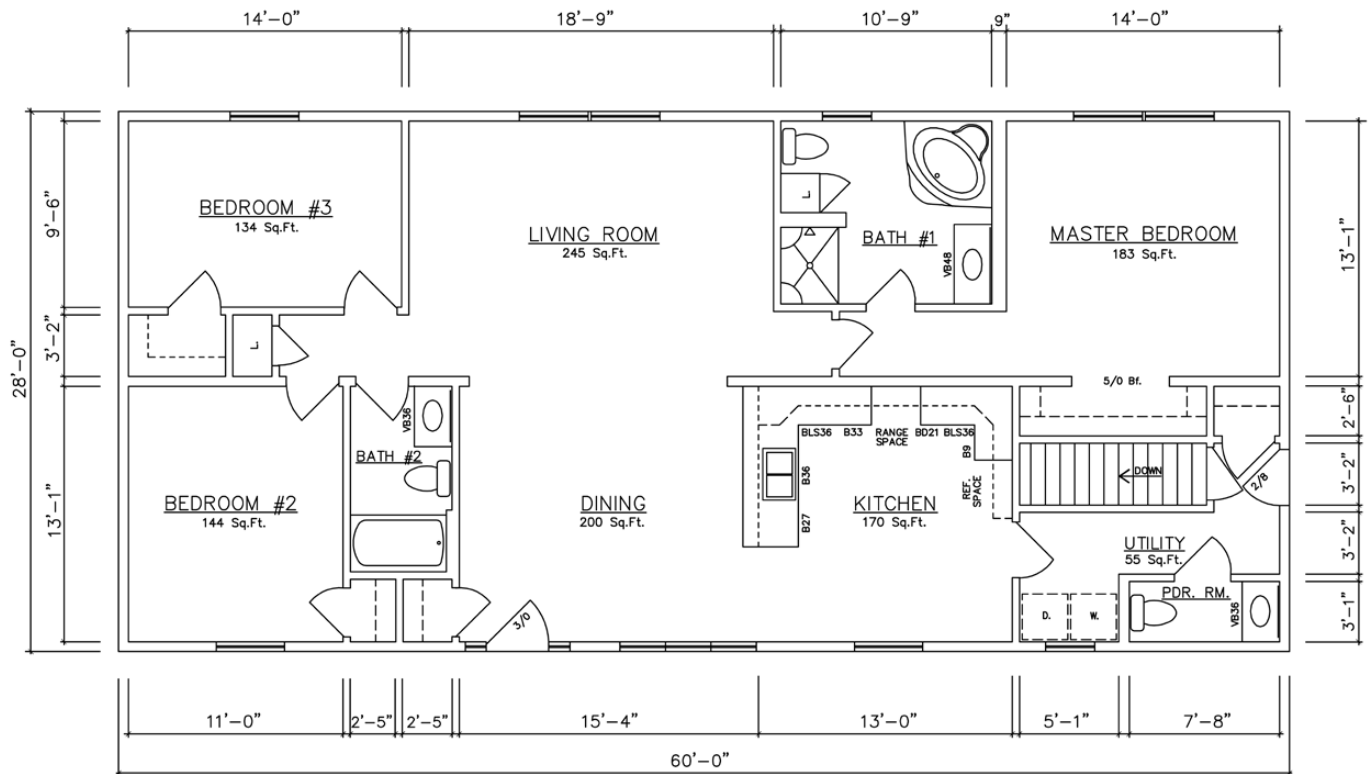
Grayling 10546 (Basement)

# Kingston 60' Models

1,680 sq. ft. for Kingston 60' Models



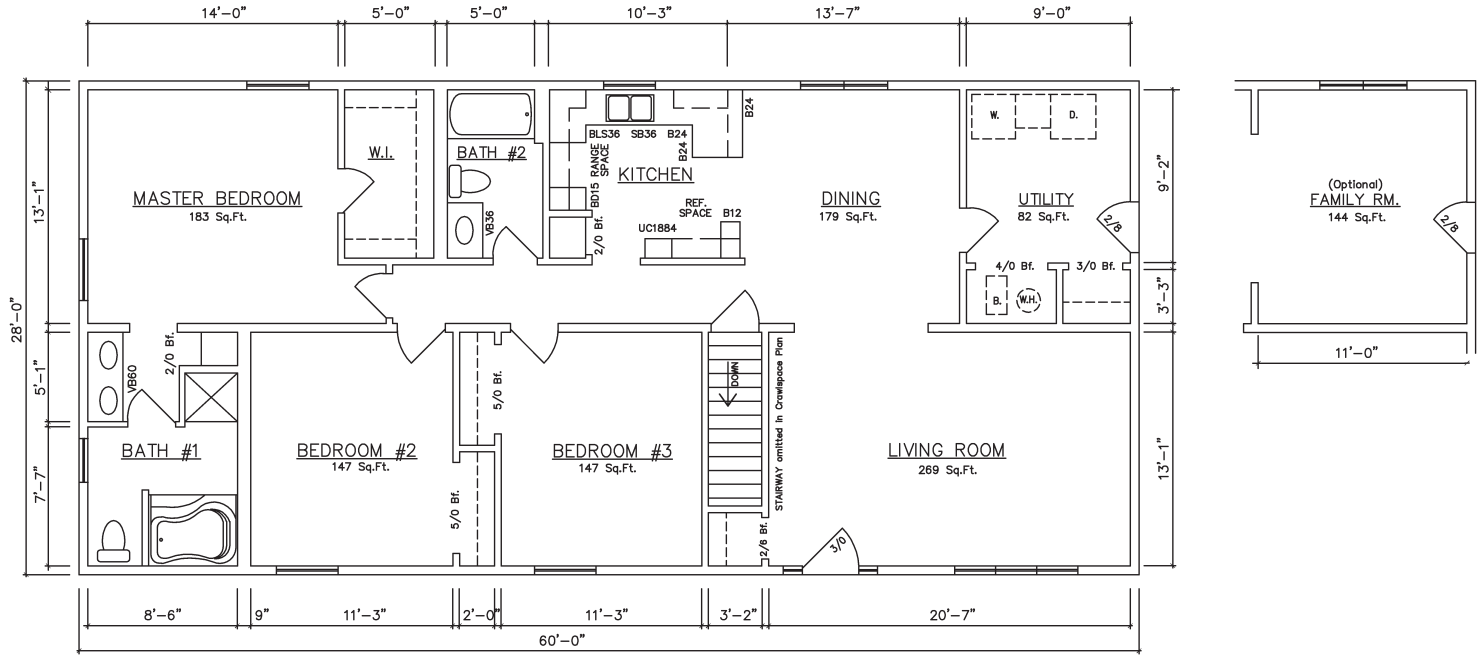
Kingston 10540 (Crawlspace)



Kingston 10542 (Basement)

# Manistee 60' Model

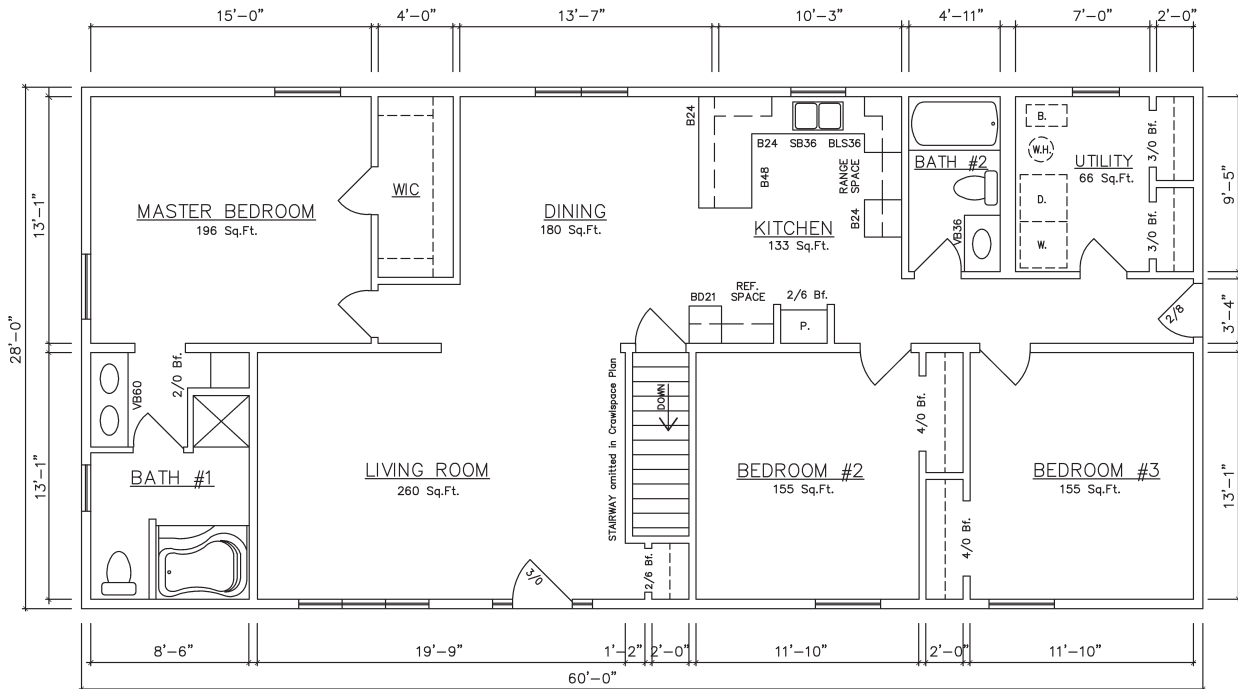
1,680 sq. ft. for Manistee 60' Model



Manistee 10532 (Basement)

# Marshall 60' Model

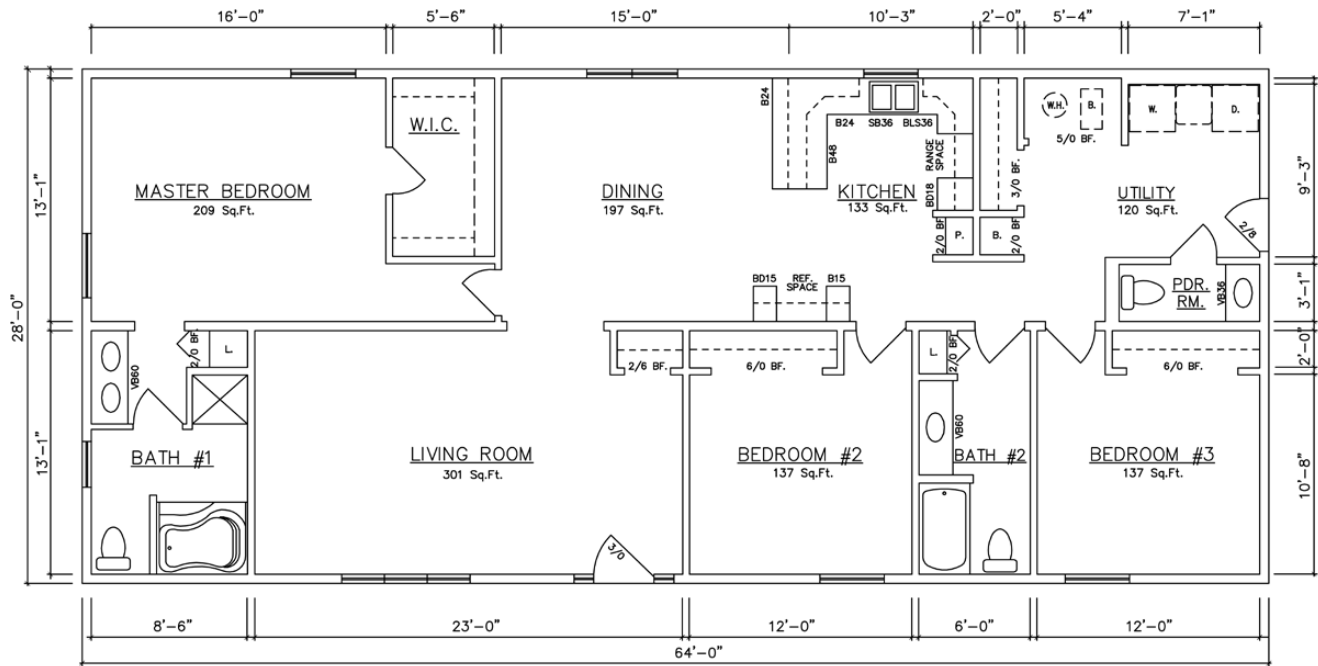
1,680 sq. ft. for Marshall 60' Model



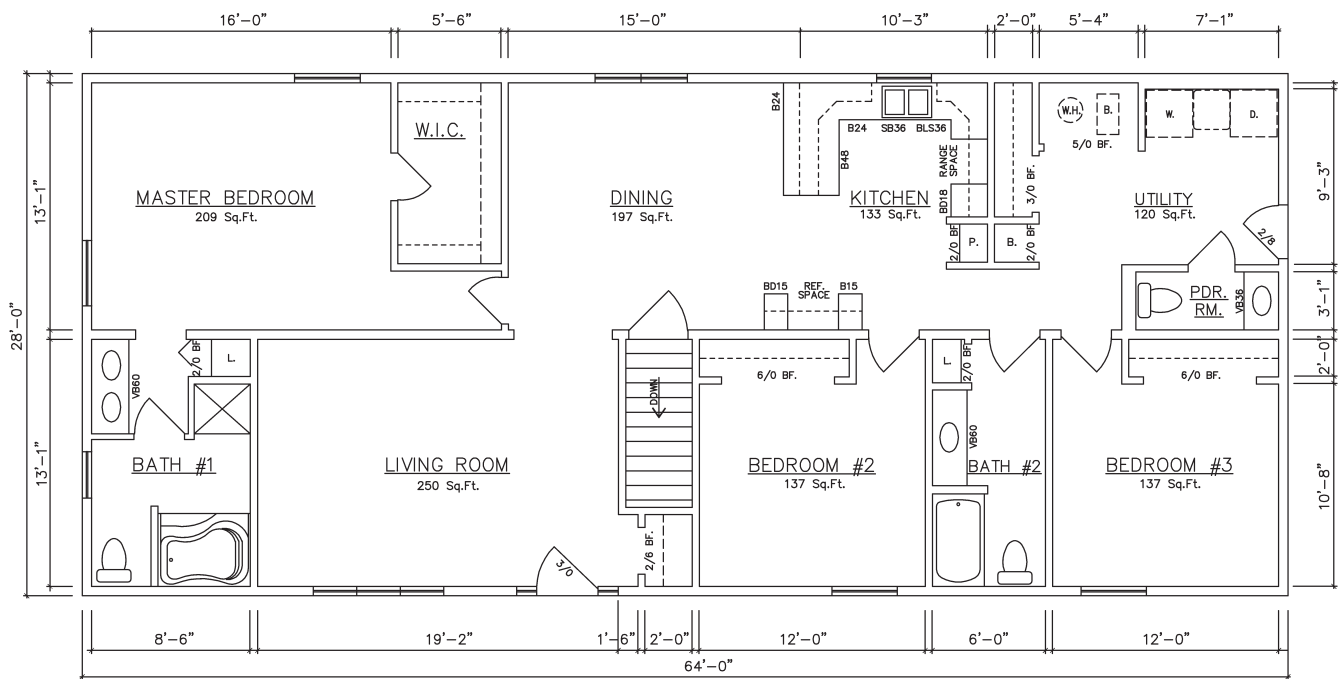
Marshall 10522 (Basement)

# Chesaning 64' Models

1,792 sq. ft. for Chesaning 64' Models



## Chesaning 10550 (Crawlspace)



## Chesaning 10552 (Basement)

General Housing Corporation

4650 E. Wilder Road, Bay City, MI 48706 • Phone (800) 351-3664 (989) 684-8078 • Fax (989) 684-2914 • Web Site [www.genhouse.com](http://www.genhouse.com)

All prices, specifications and materials are subject to change without notice. Some of the features shown on elevation drawings in the literature may be options.  
© 2014 General Housing Corp. R4-07/14