



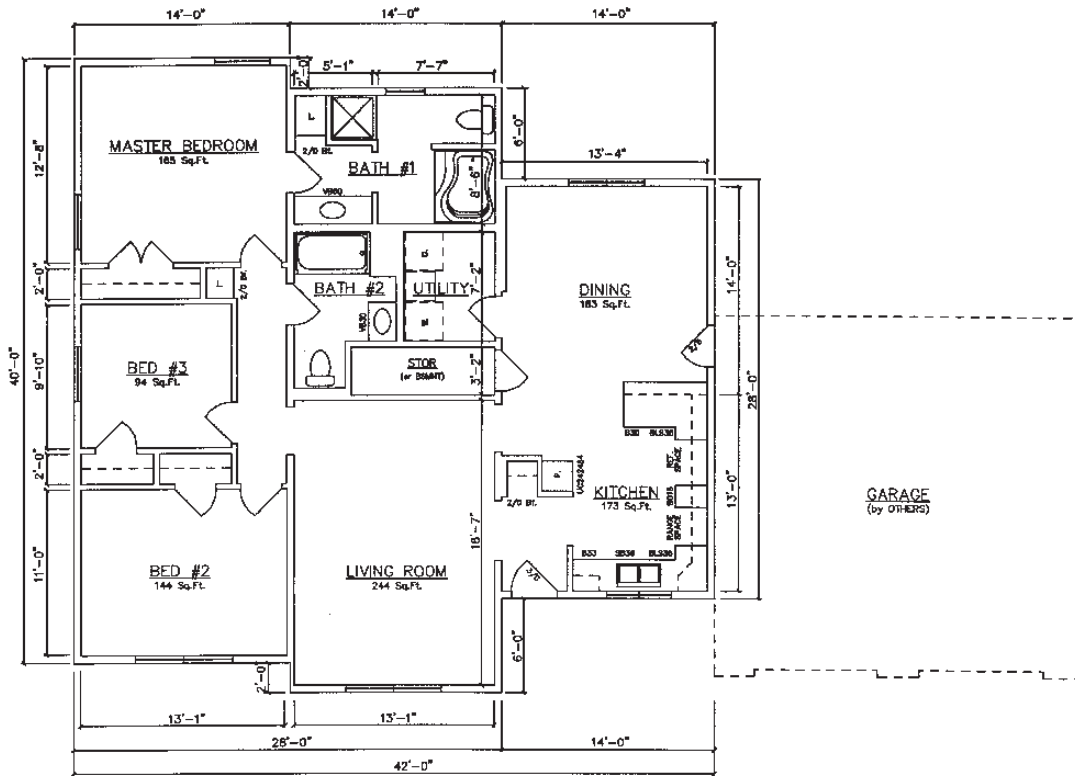
*3-Module &
4-Module Ranch
1,456-1,848 sq. ft.*

*Richville • Amherst II • Bristol II • Auburn II
Brighton II • Essex II*

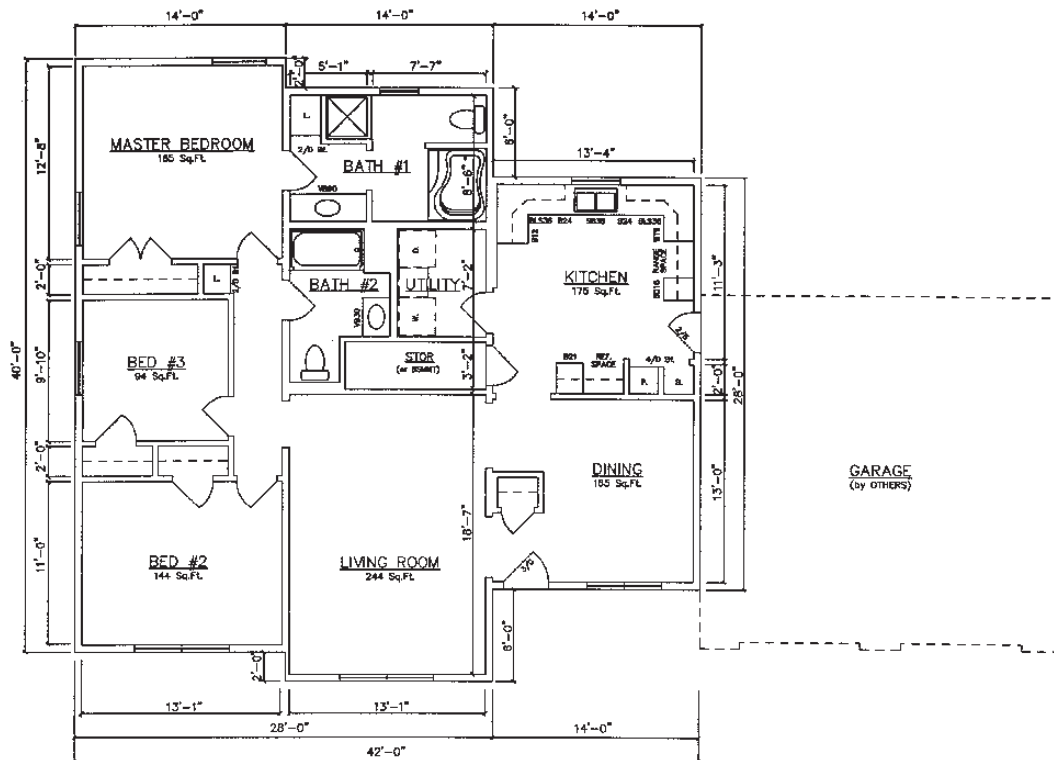


General Housing Corporation
Custom Crafted Construction

Richville 42' • 3-Module Models

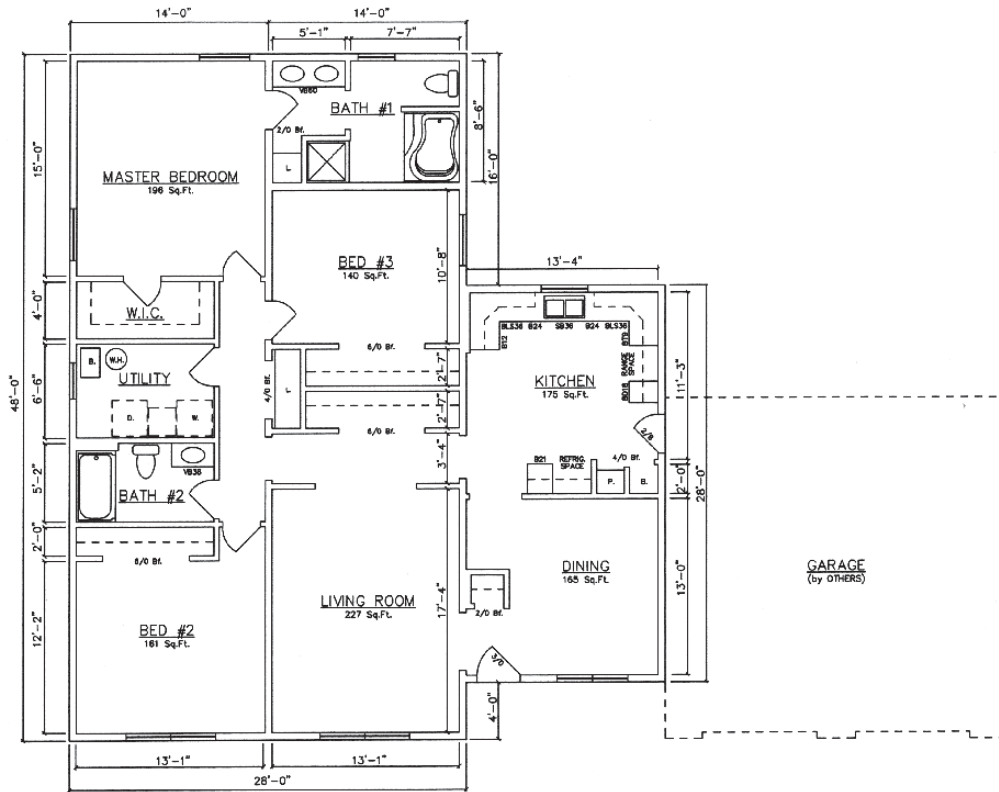


Richville 28x40 12228 (Crawlspace) 1,512 sq. ft.

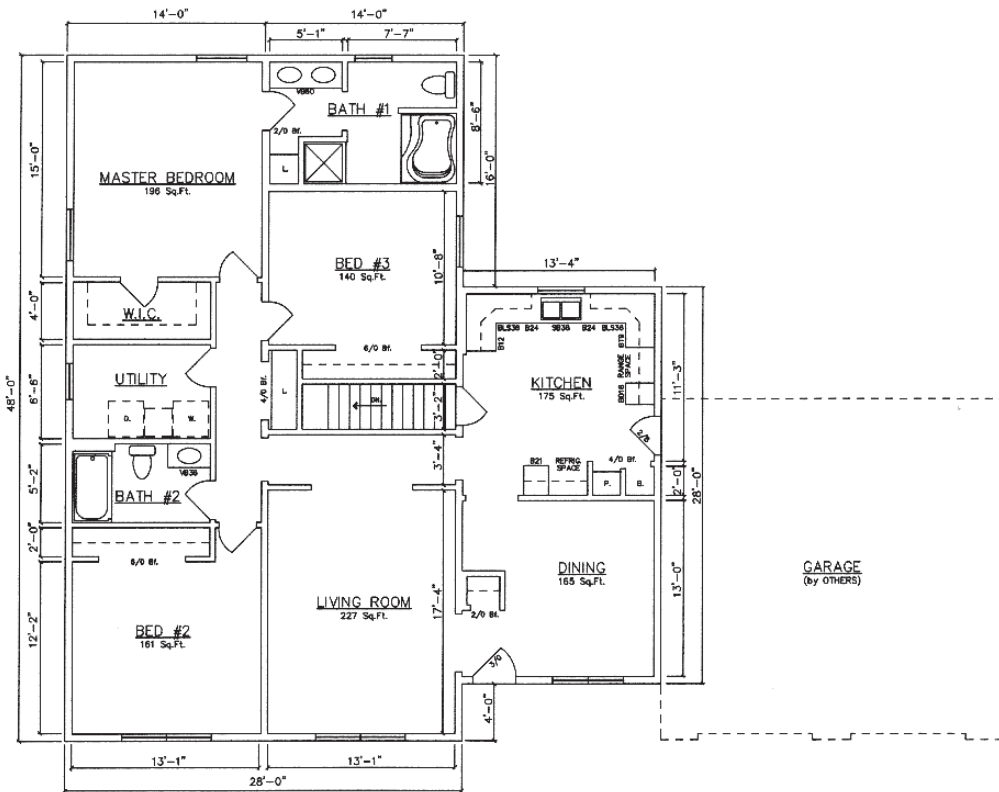


Richville 28x40 12230 (Basement) 1,512 sq. ft.

Richville 48' • 3-Module Models

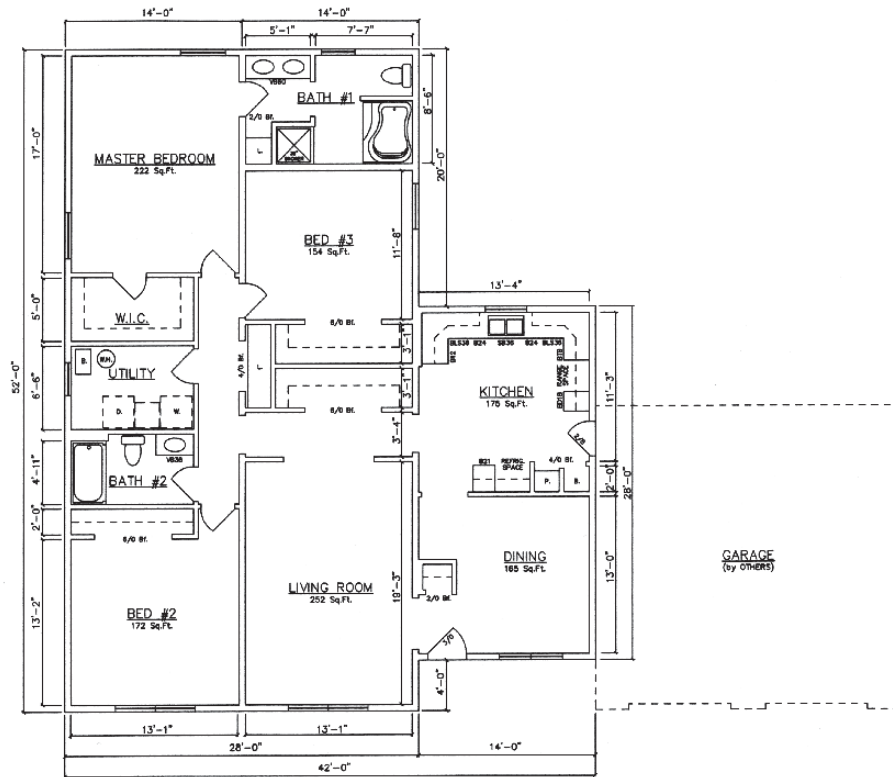


Richville 28x48 12210 (Crawlspace) 1,736 sq. ft.

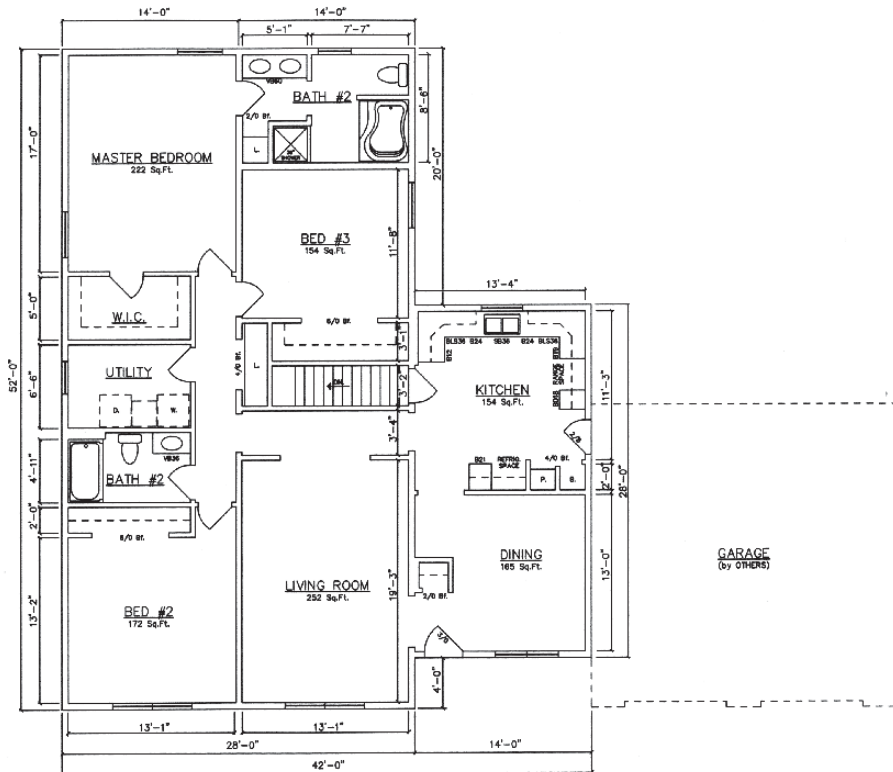


Richville 28x48 12212 (Basement) 1,736 sq. ft.

Richville 52' • 3-Module Models

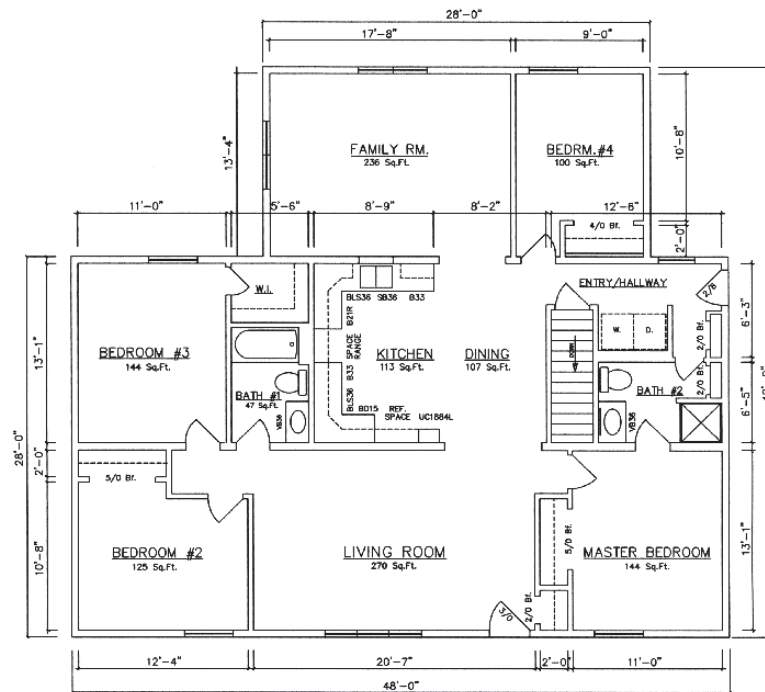


Richville 28x52 12220 (Crawlspace) 1,848 sq. ft.



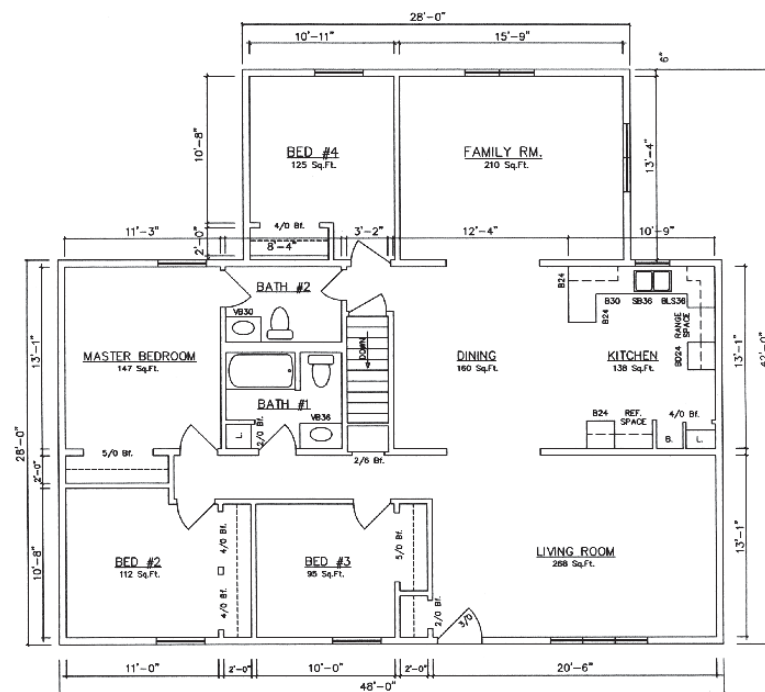
Richville 28x52 12222 (Basement) 1,848 sq. ft.

Amherst II 48' • 3-Module Model



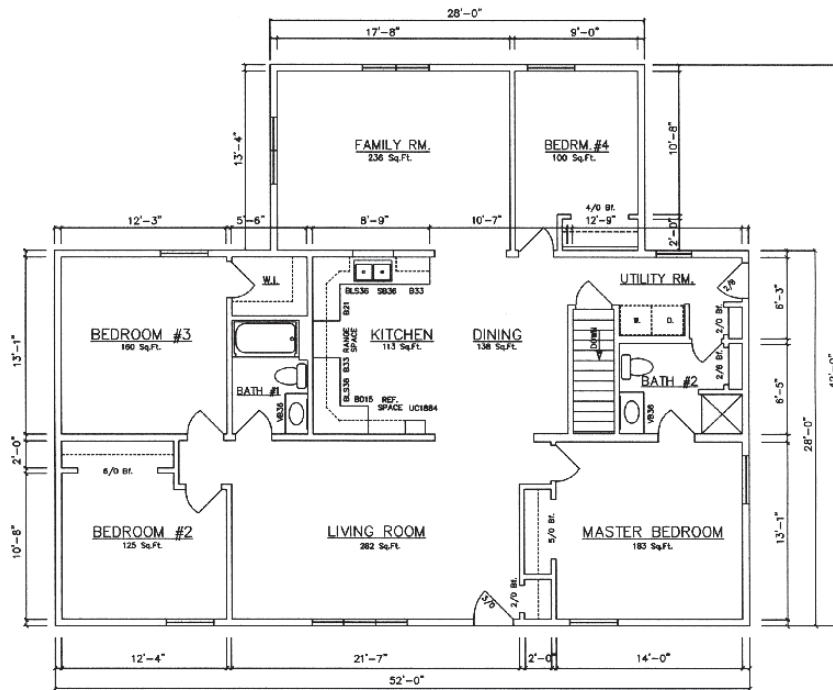
Amherst II 28x48 10440 – 1,736 sq. ft.

Bristol II 48' • 3-Module Model



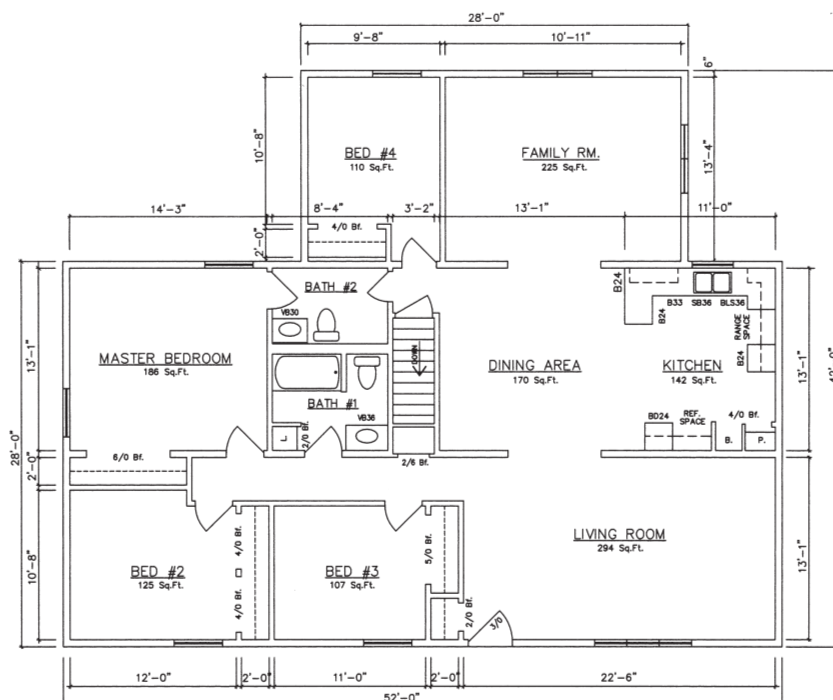
Bristol II 28x48 10311 – 1,736 sq. ft.

Auburn II 52' • 3-Module Model



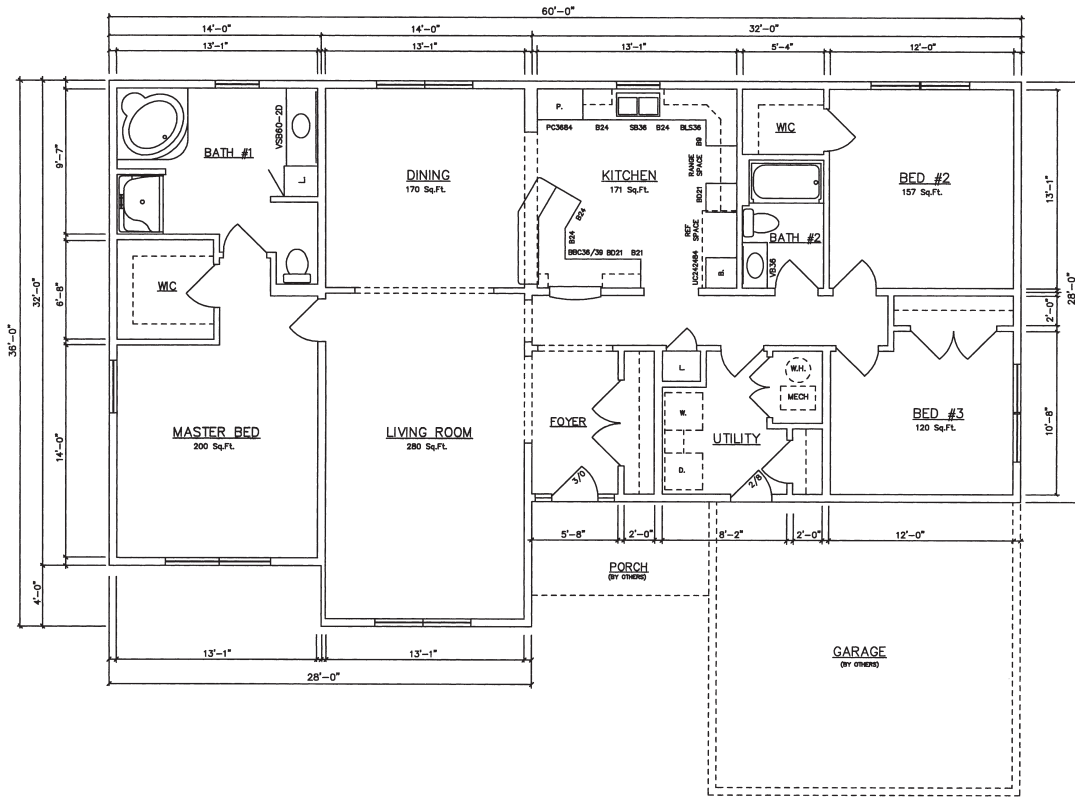
Auburn II 28x52 10444 – 1,848 sq. ft.

Brighton II 52' • 3-Module Model

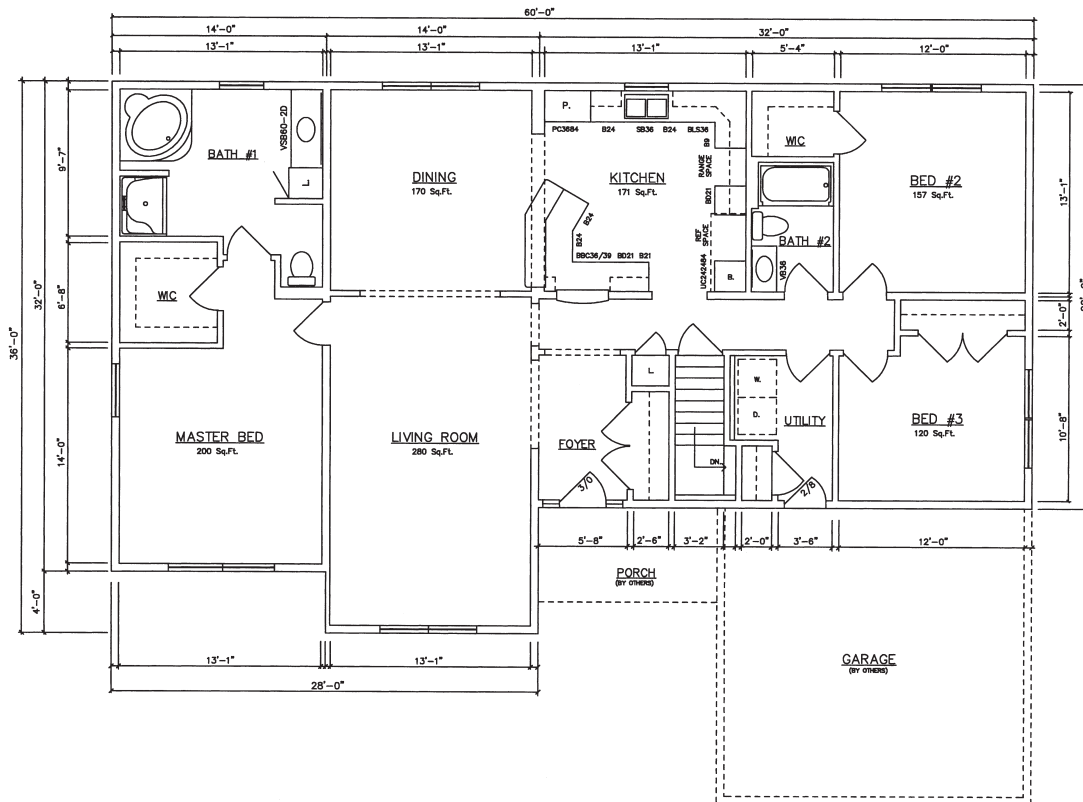


Brighton II 28x52 10319 – 1,848 sq. ft.

Essex II • 4-Module Models

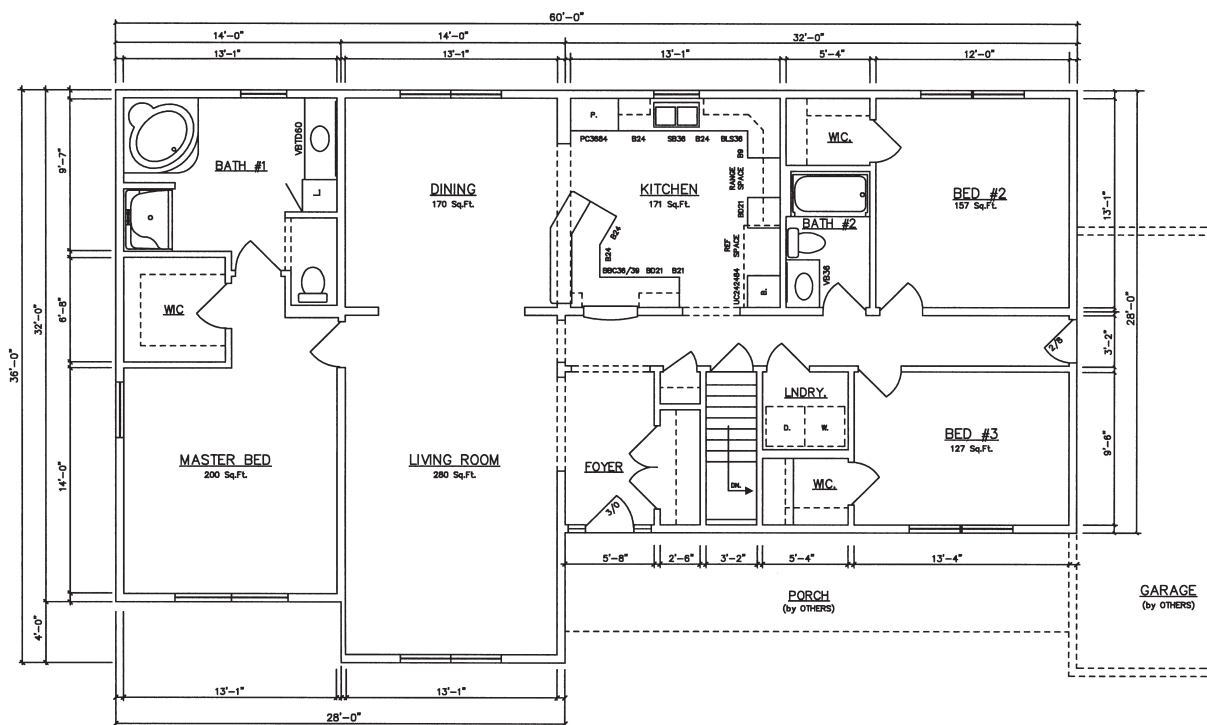
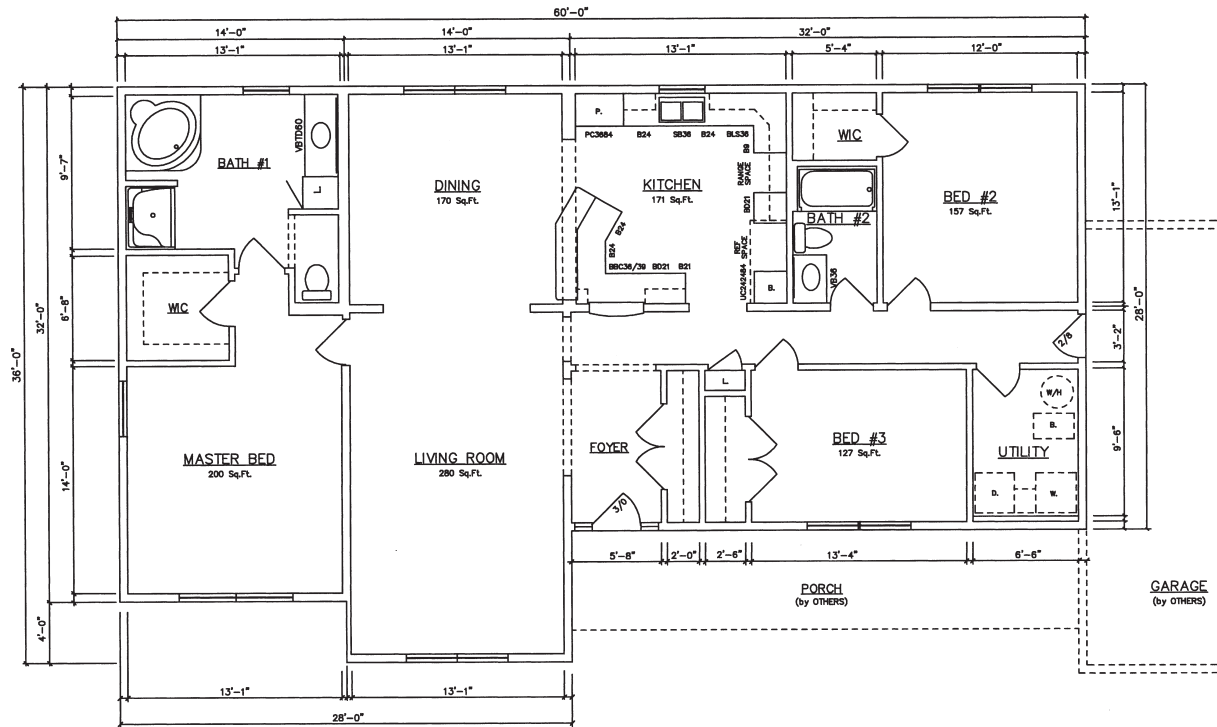


Essex II 14100 (Front Garage – Crawlspace) 1,848 sq. ft.



Essex II 14102 (Front Garage – Basement) 1,848 sq. ft.

Essex II • 4-Module Models



General Housing Corporation

4650 E. Wilder Road, Bay City, MI 48706 • Phone (800) 351-3664 (989) 684-8078 • Fax (989) 684-2914 • Web Site www.genhouse.com

All prices, specifications and materials are subject to change without notice. Some of the features shown on elevation drawings in the literature may be options.

© 2019 General Housing Corp. R5-08/19