

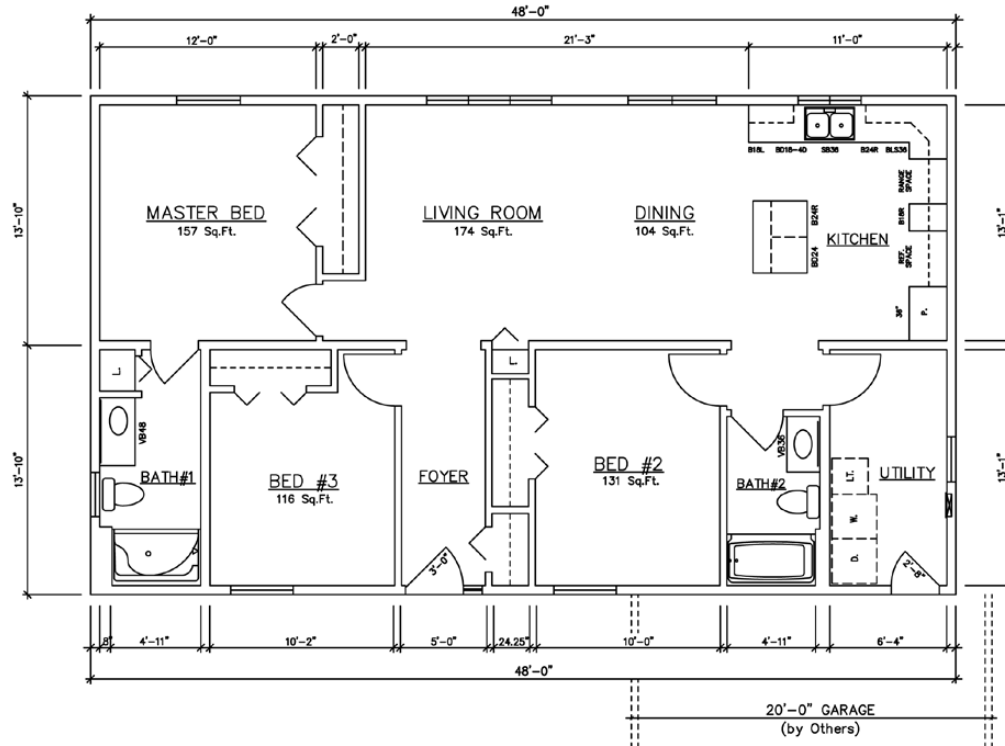


Lakeview • Indian River
1,344-1,680 sq. ft.
Lakeview • Lakeview II • Indian River

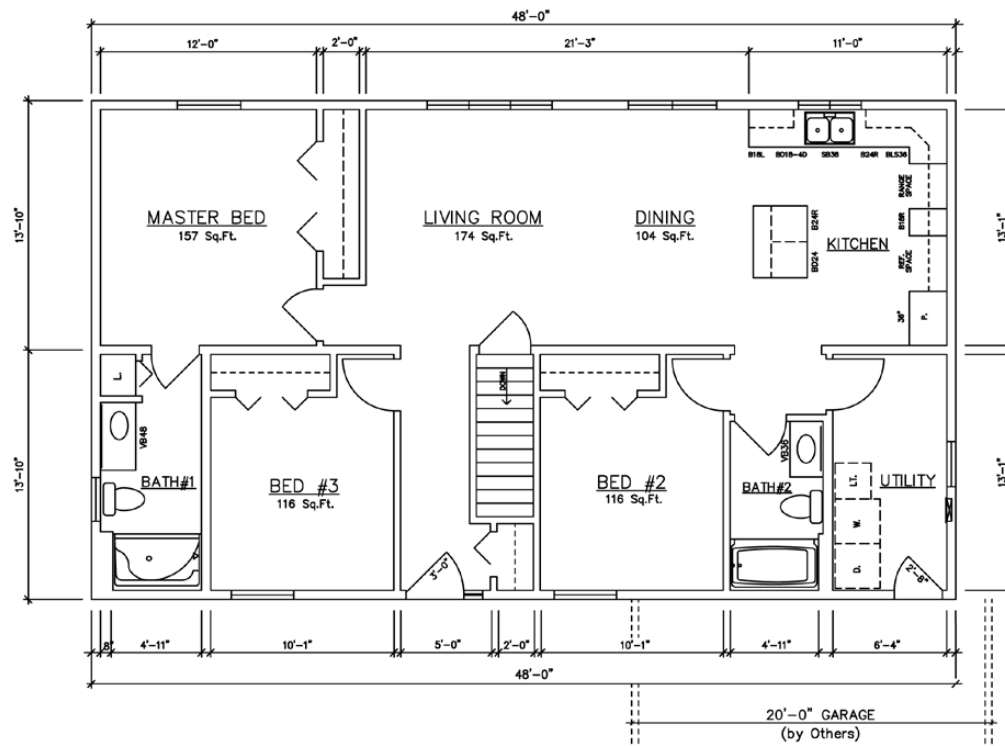


General Housing Corporation
Custom Crafted Construction

Lakeview 48' Model

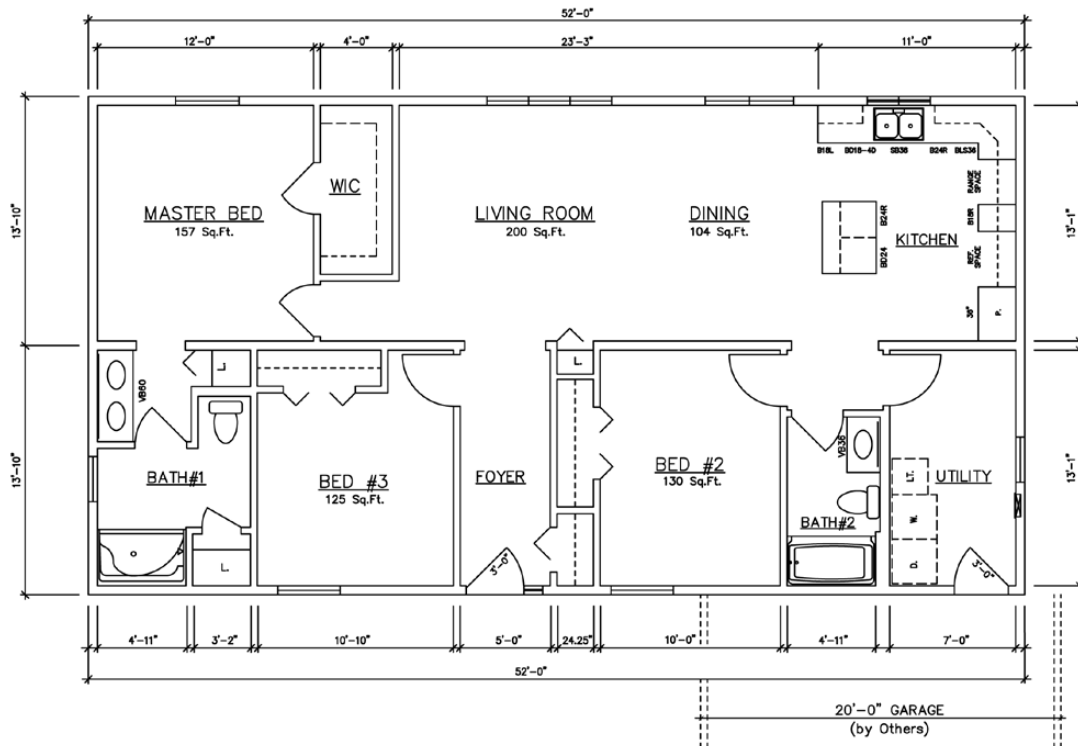


Lakeview 10578 (Crawlspace) 1,344 sq. ft.

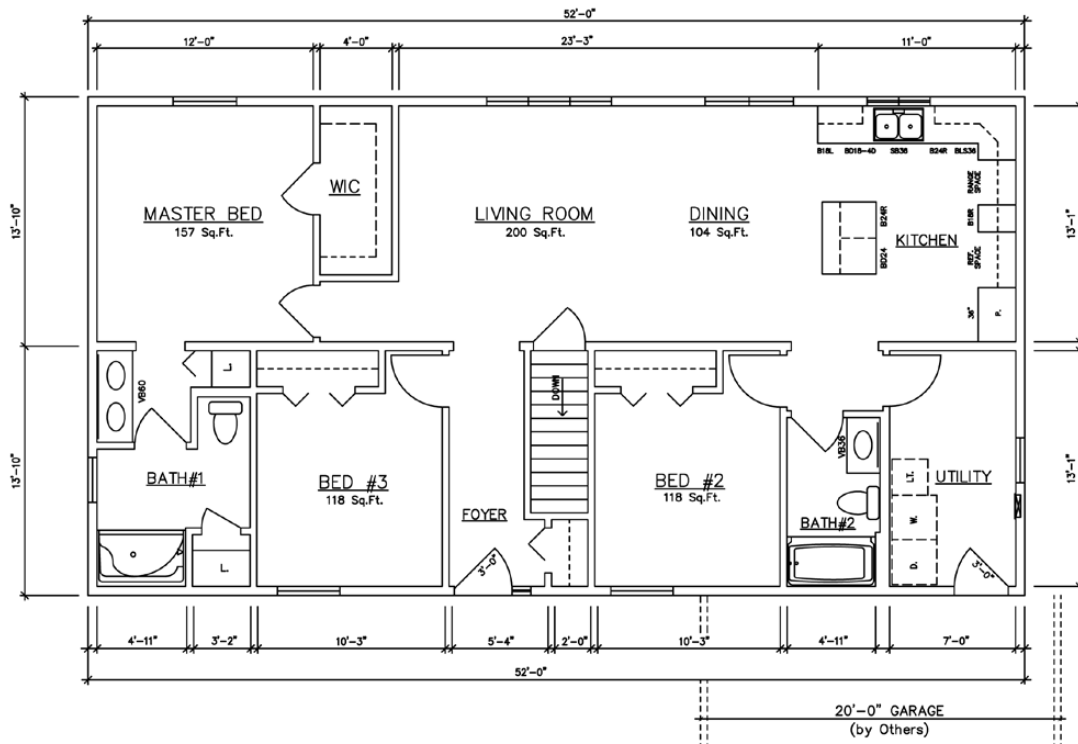


Lakeview 10580 (Basement) 1,344 sq. ft.

Lakeview 52' Model

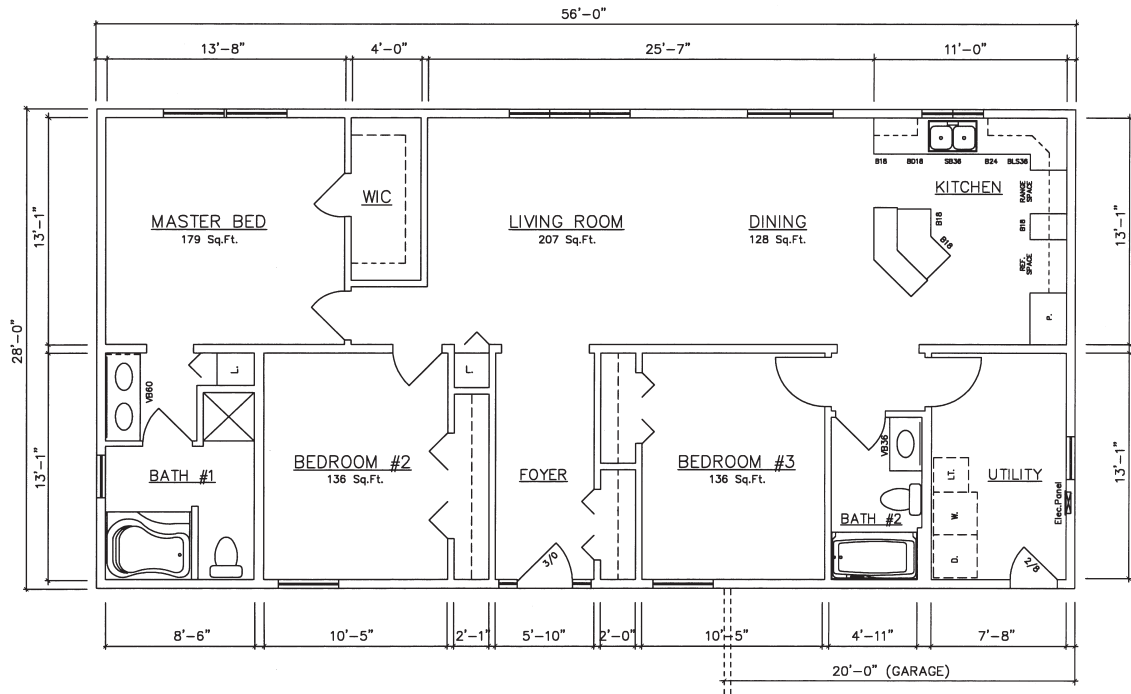


Lakeview 10582 (Crawlspace) 1,456 sq. ft.

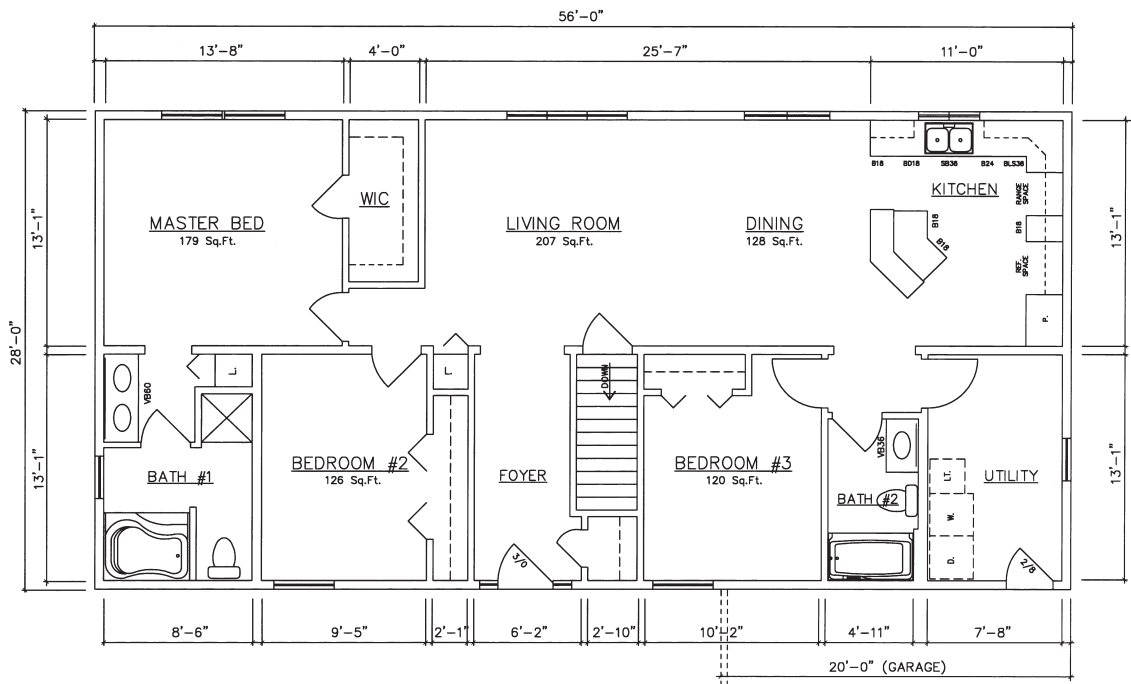


Lakeview 10584 (Basement) 1,456 sq. ft.

Lakeview 56' Model

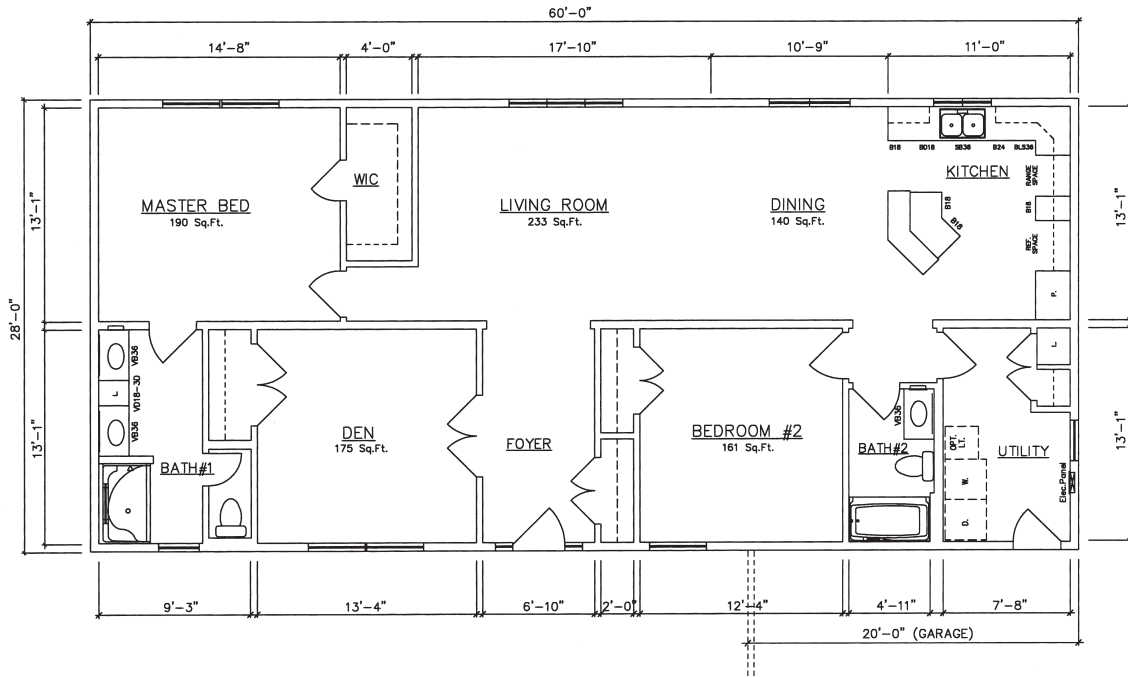


Lakeview 10554 (FLG - Crawlspace) 1,568 sq. ft.

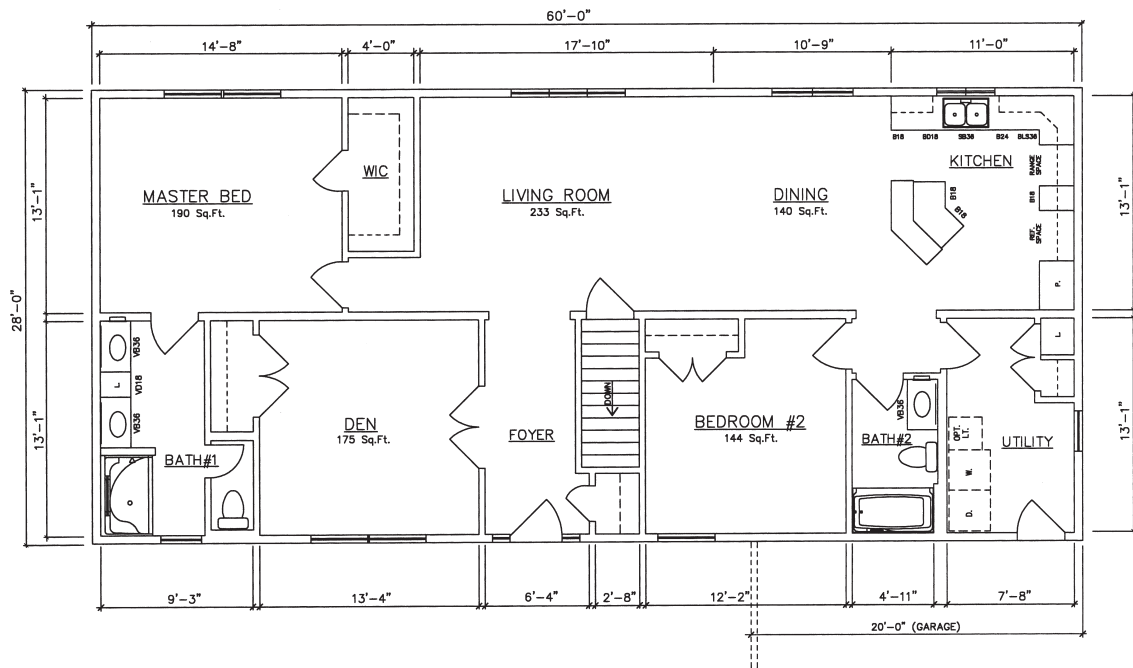


Lakeview 10556 (FLG - Basement) 1,568 sq. ft.

Lakeview II 60' Model

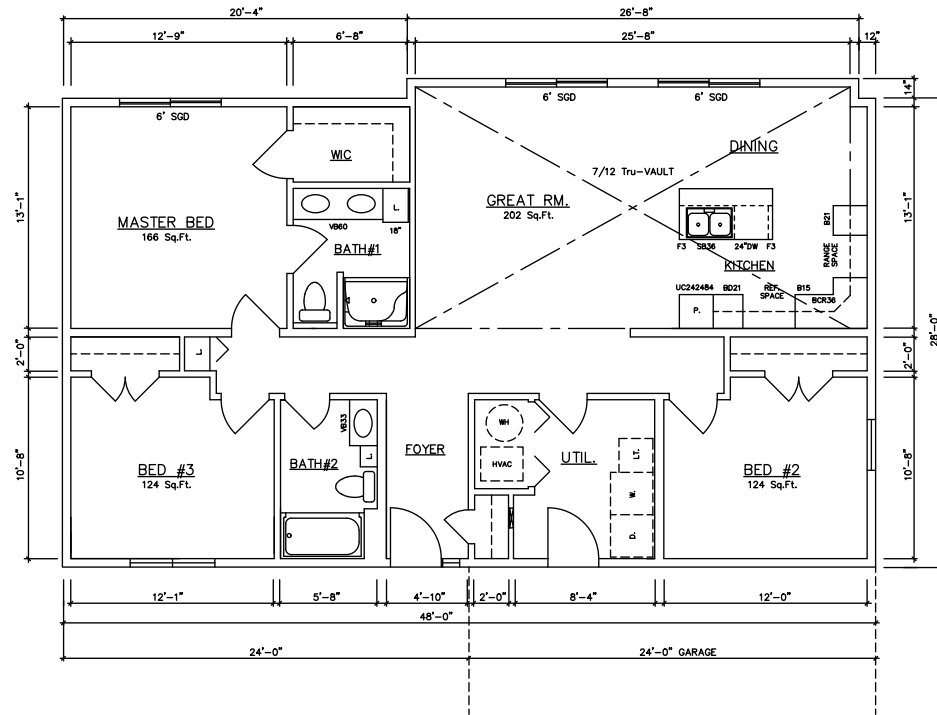


Lakeview II 10562 (FLG - Crawlspace) 1,680 sq. ft.

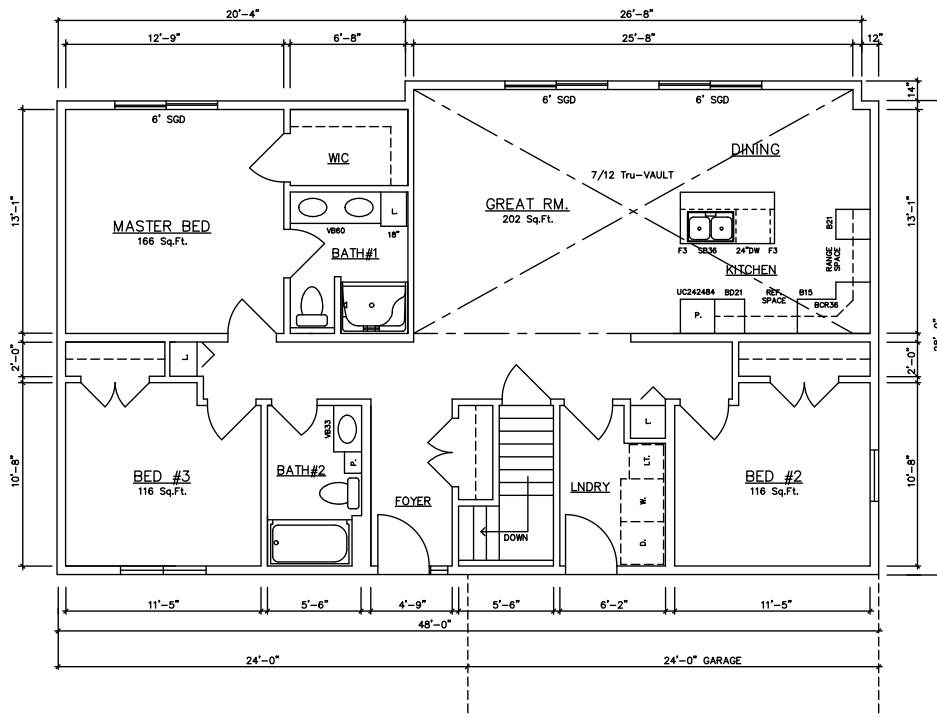


Lakeview II 10564 (FLG - Basement) 1,680 sq. ft.

Indian River 48' Model

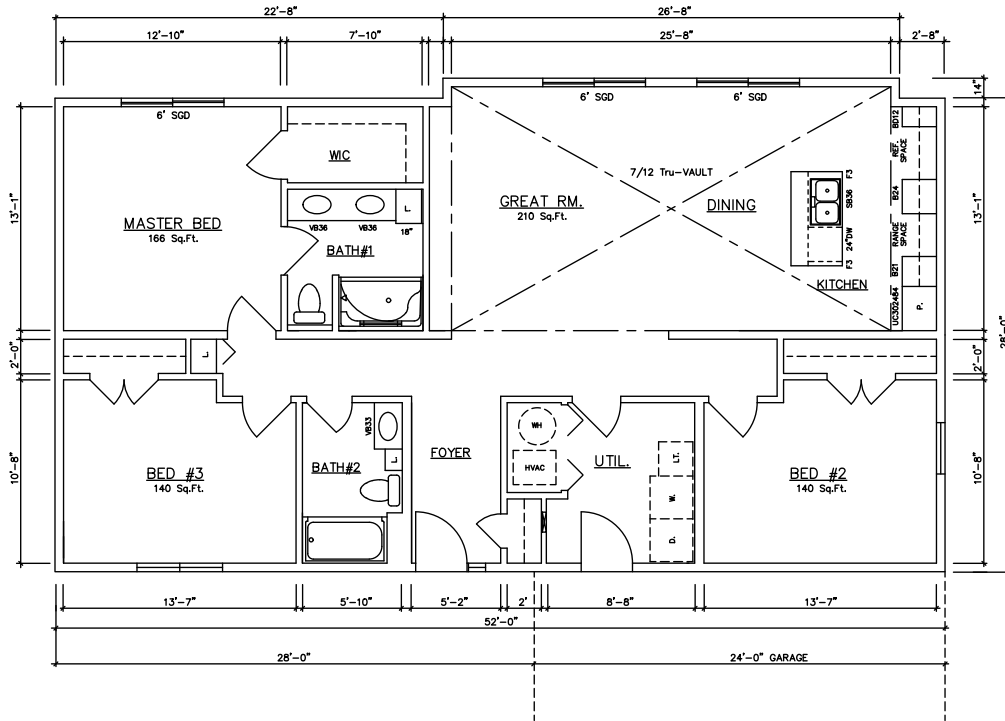


Indian River 10566 (Crawlspace) 1,374 sq. ft.

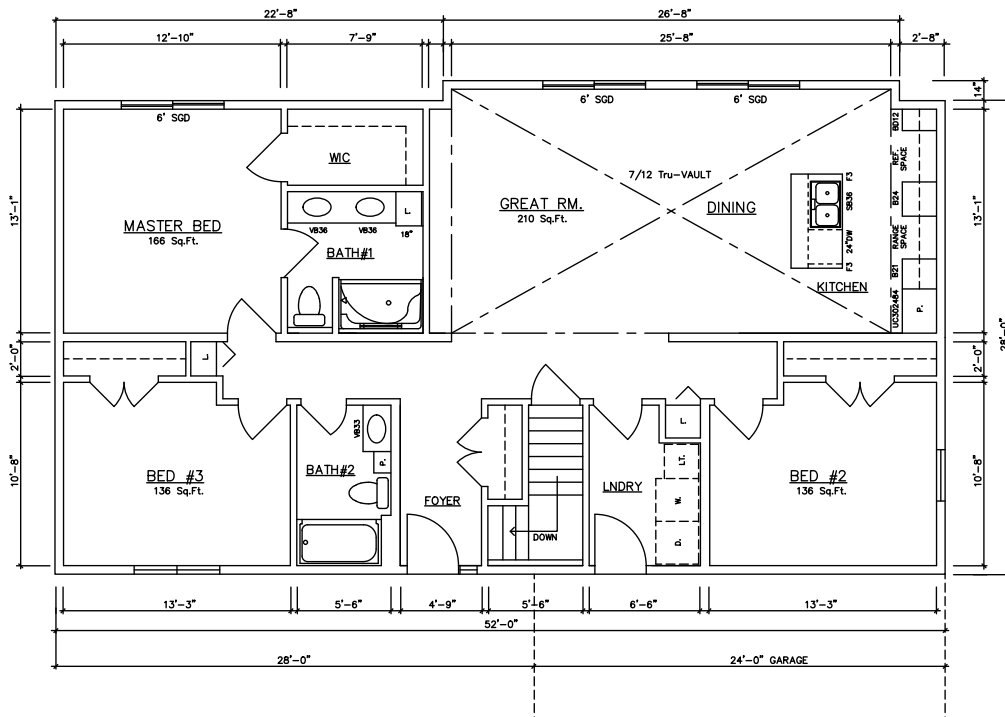


Indian River 10568 (Basement) 1,374 sq. ft.

Indian River 52' Model

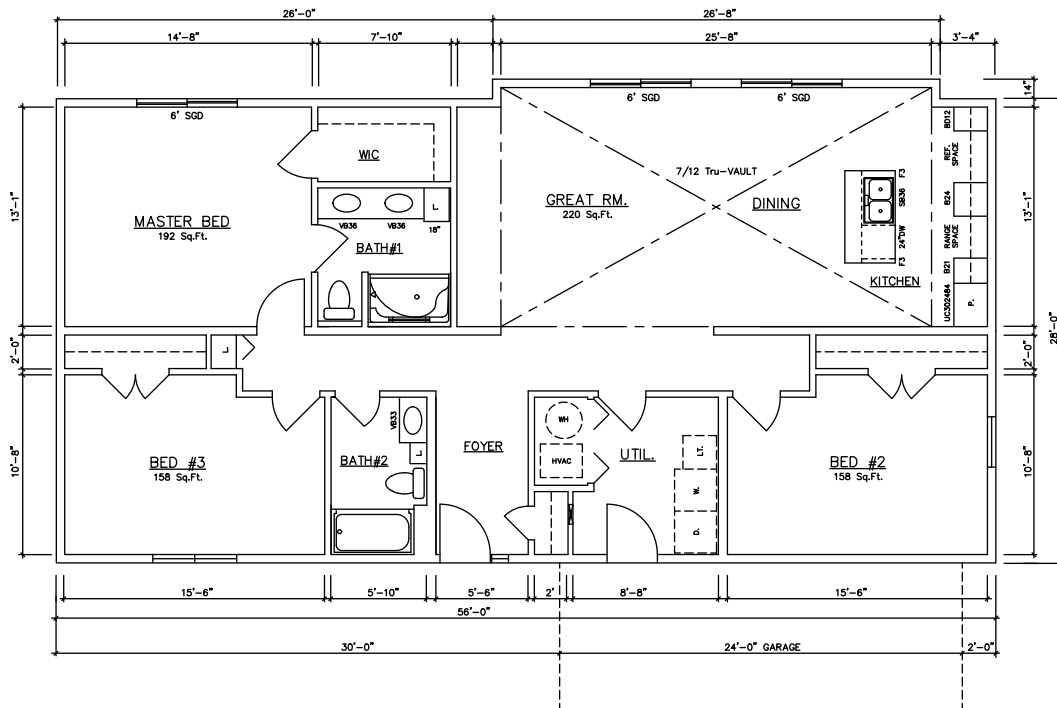


Indian River 10570 (Crawlspace) 1,486 sq. ft.

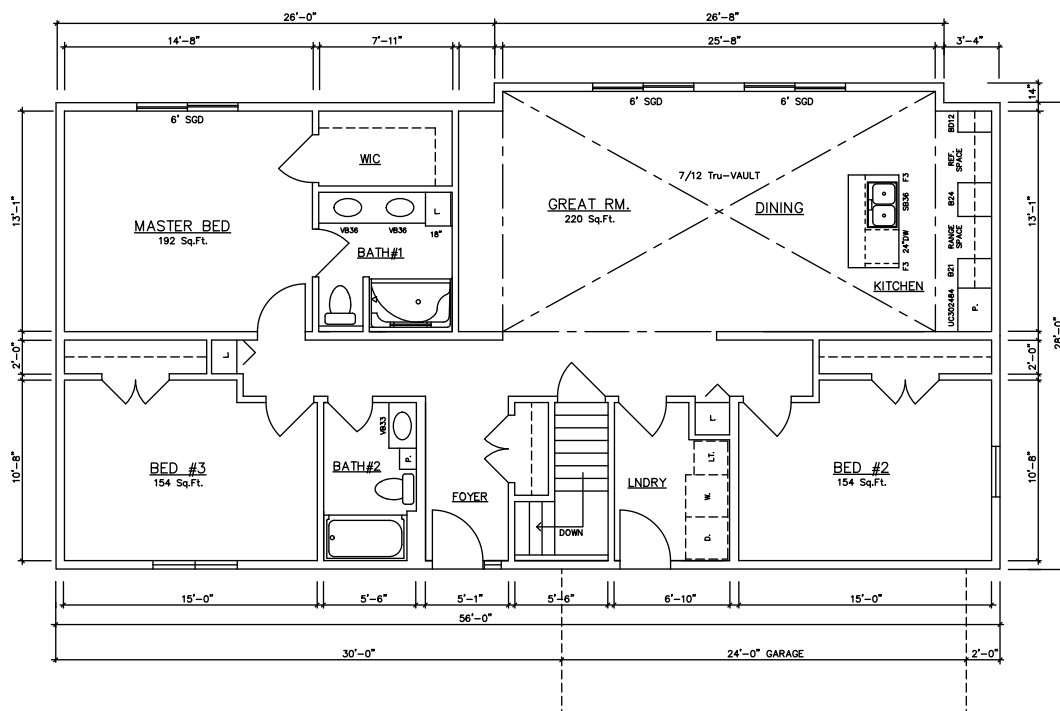


Indian River 10572 (Basement) 1,486 sq. ft.

Indian River 56' Model



Indian River 10574 (Crawlspace) 1,598 sq. ft.



Indian River 10576 (Basement) 1,598 sq. ft.

Indian River Model



Front



Rear



General Housing Corporation
Custom Crafted Construction

General Housing Corporation
4650 E. Wilder Road
Bay City, MI 48706

Phone (800) 351-3664
(989) 684-8078
Fax (989) 684-2914
www.genhouse.com