

**MID**  
**CENTURY**  
**MODERN**

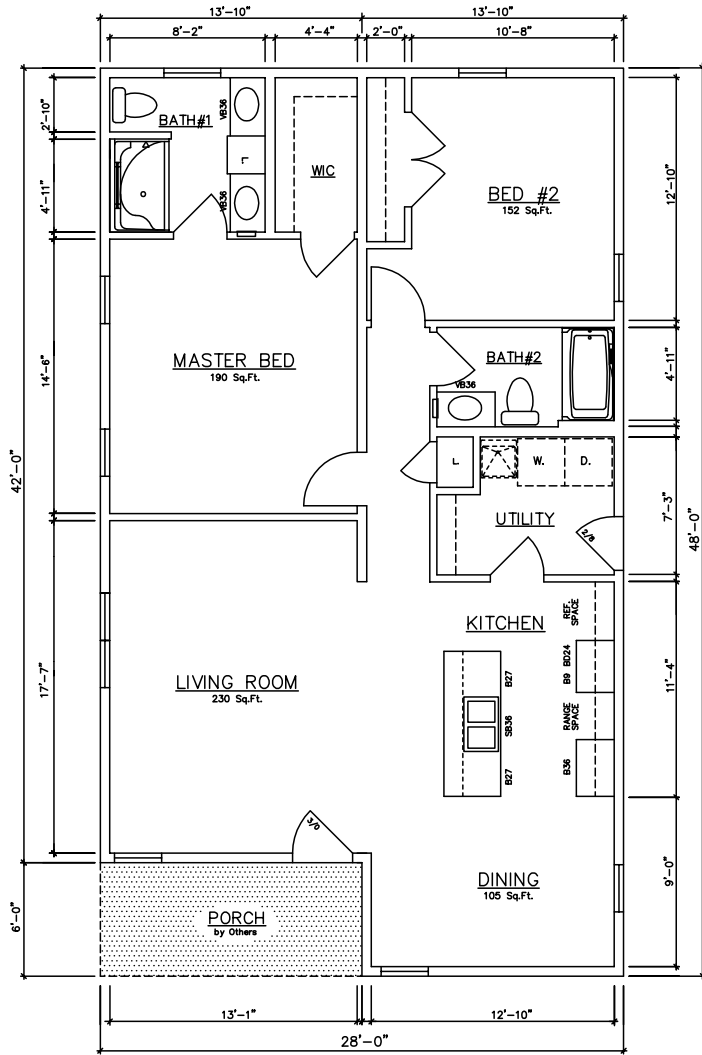
1,260-1,830 sq. ft.

Ann Arbor • Ann Arbor II • Ann Arbor III  
Birch Arbor • Birch Arbor II

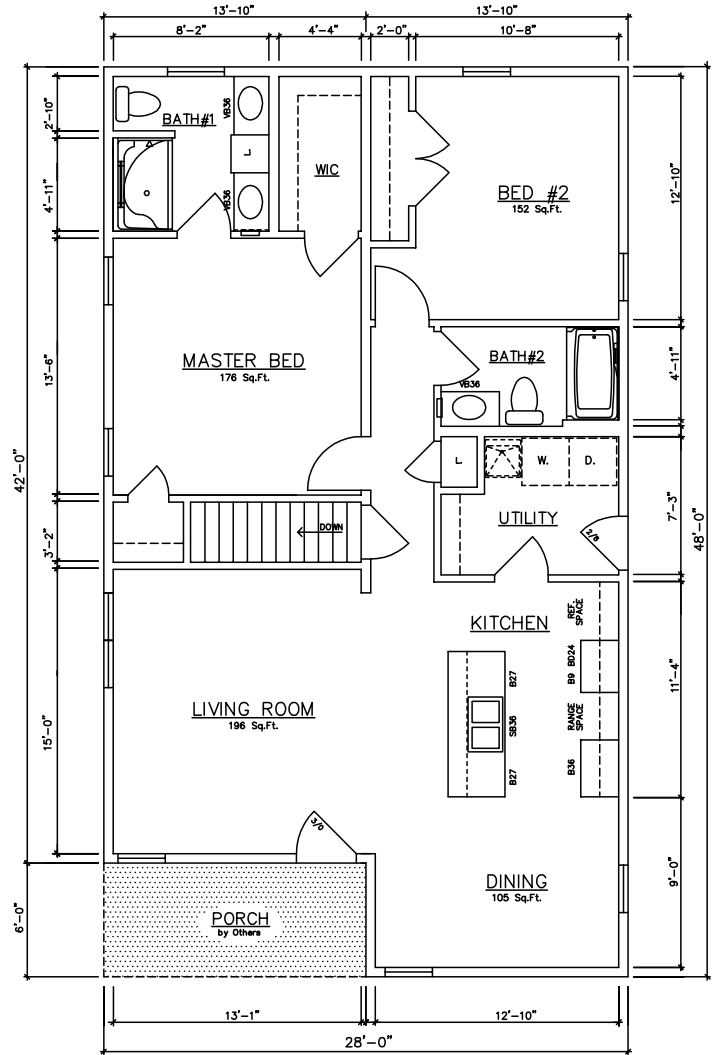


**General Housing Corporation**  
*Custom Crafted Construction*

# Ann Arbor 42' / 48' Model

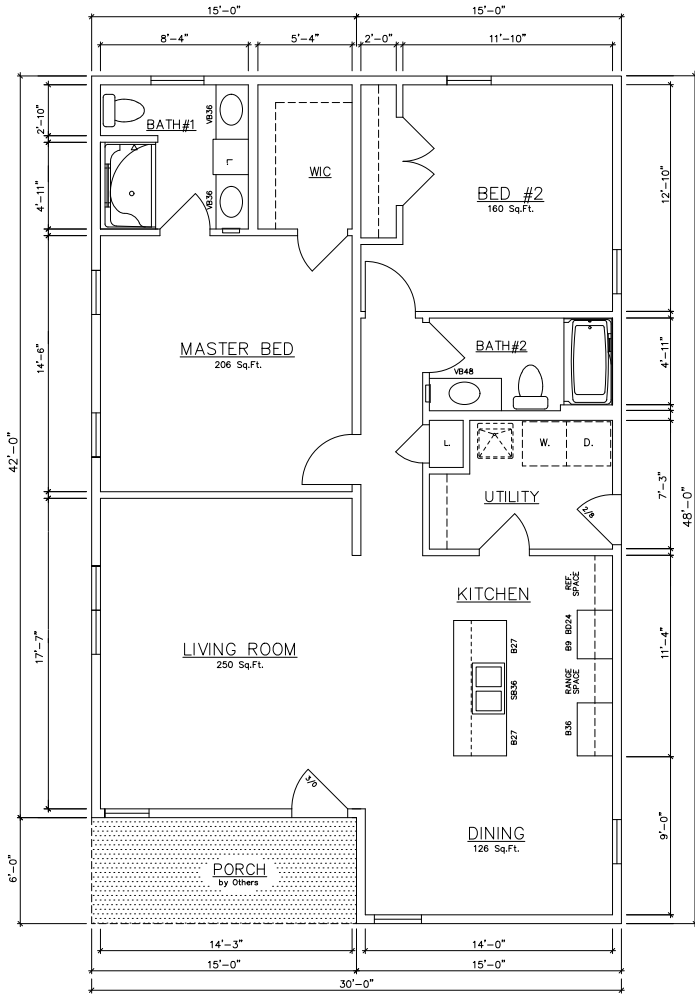


Ann Arbor 10732 (Crawlspace)  
1,260 sq. ft.



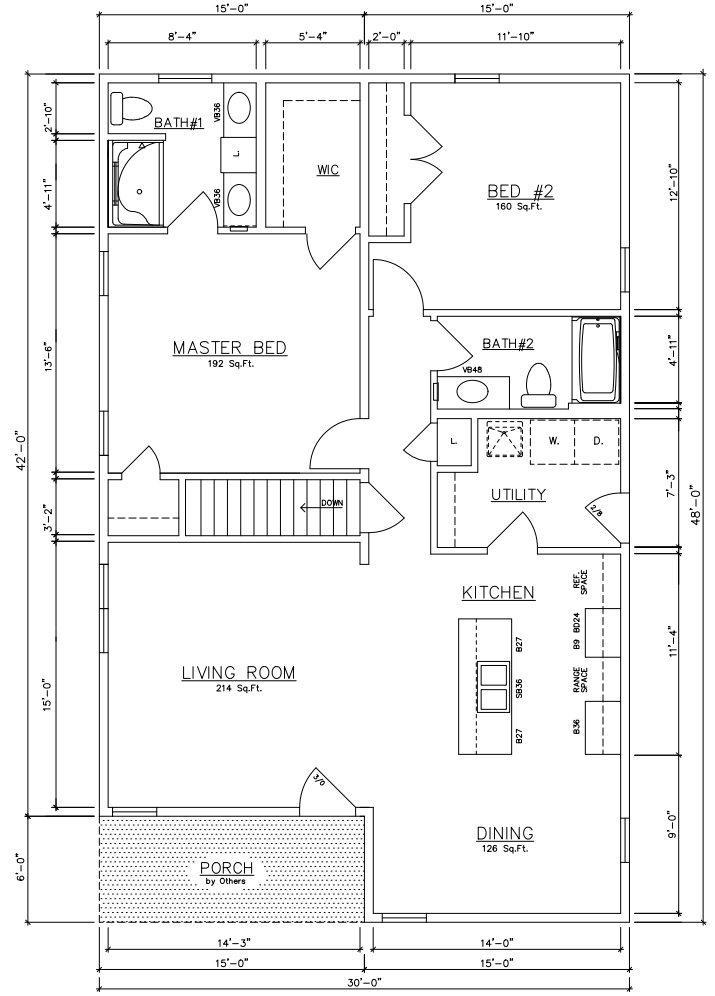
Ann Arbor 10734 (Basement)  
1,260 sq. ft.

# Ann Arbor 42' / 48' Models



**30' WIDE OPTION**

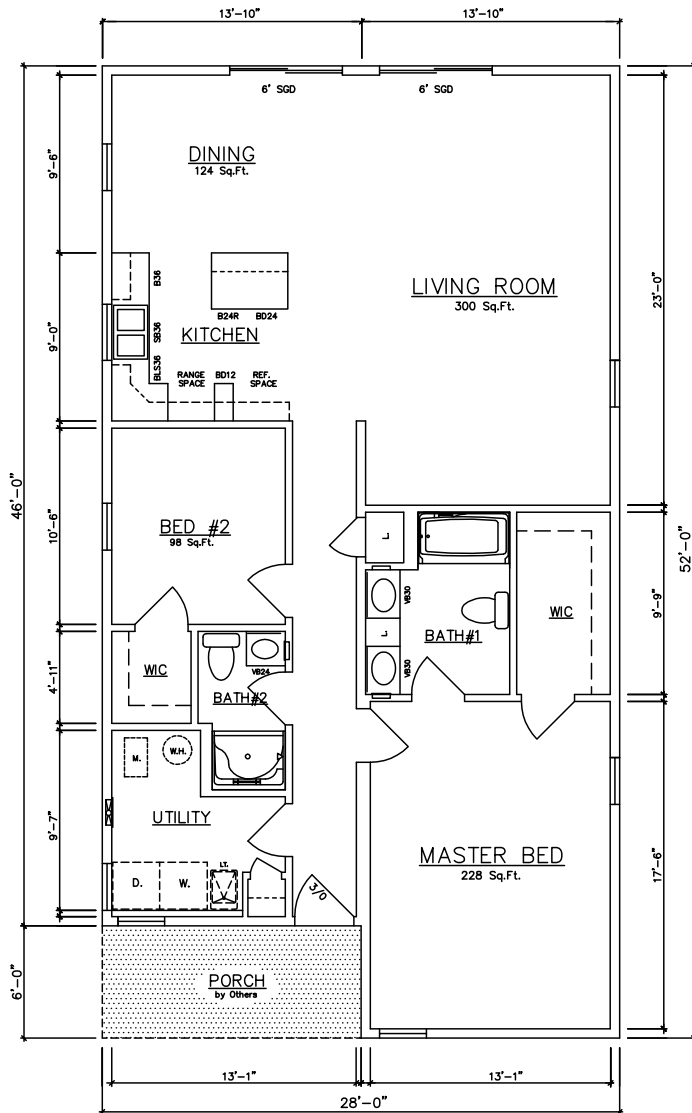
Ann Arbor - 10732 (Crawlspace)  
1,350 sq. ft.



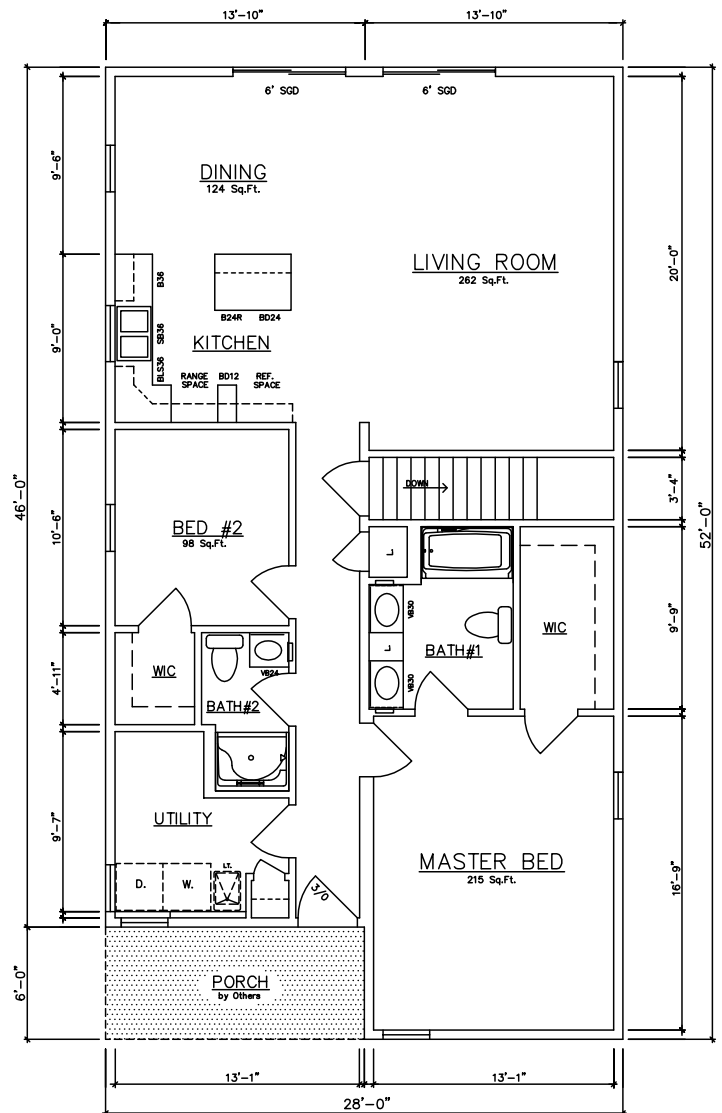
**30' WIDE OPTION**

Ann Arbor - 10734 (Basement)  
1,350 sq. ft.

# Ann Arbor II 46' / 52' Model

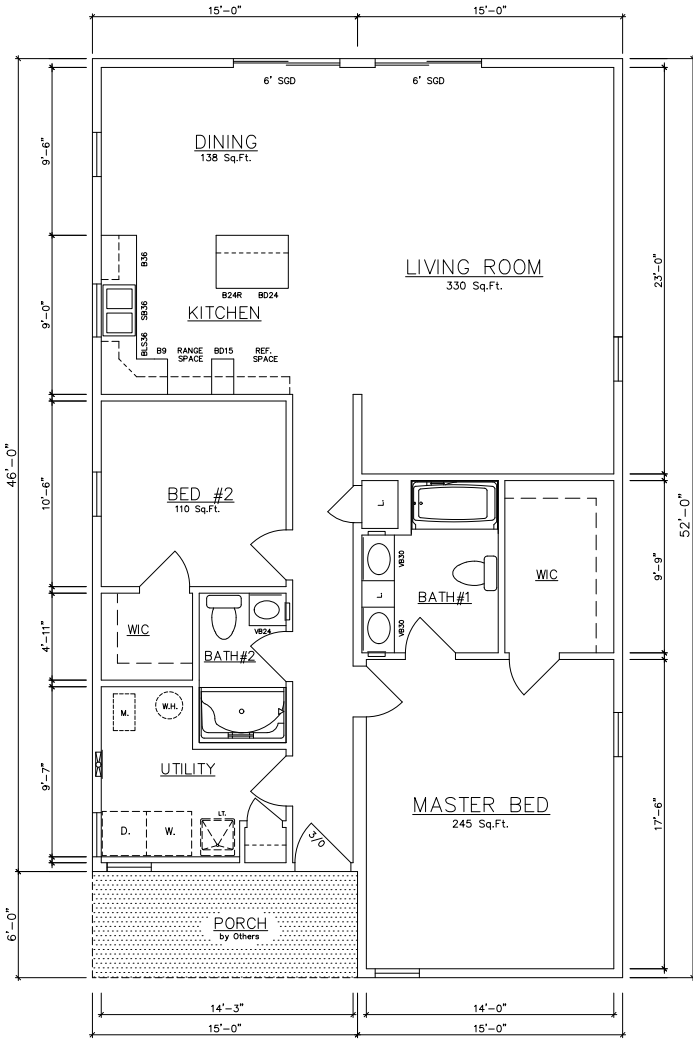


Ann Arbor II - 10728 (Crawlspace)  
1,372 sq. ft.

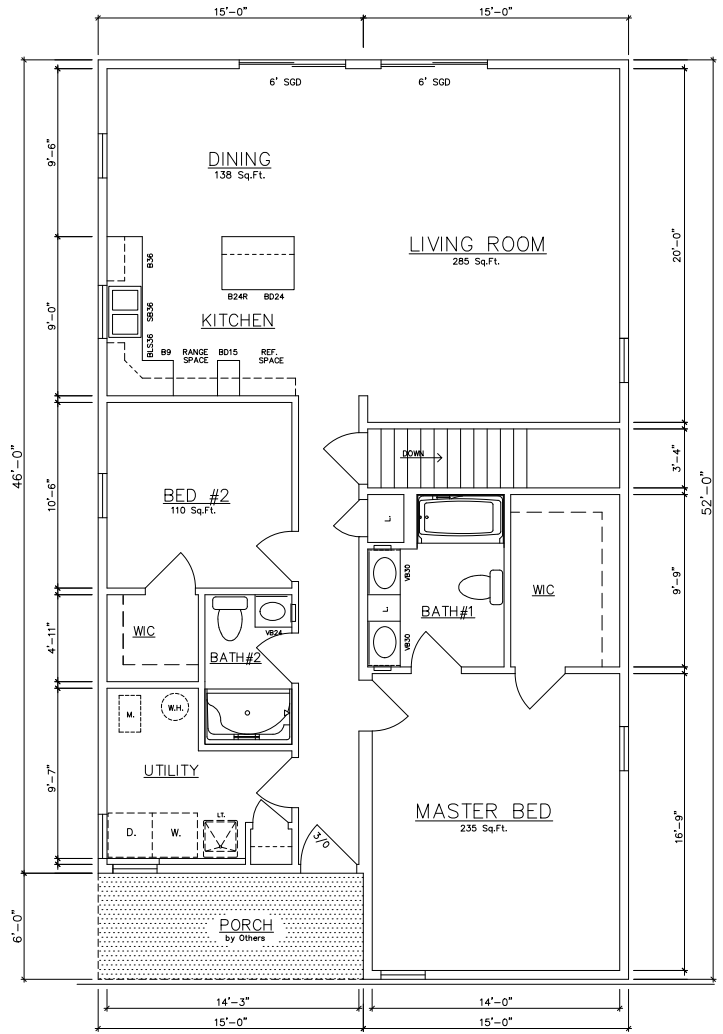


Ann Arbor II - 10730 (Basement)  
1,372 sq. ft.

# Ann Arbor II 46' / 52' Models



**30' WIDE OPTION**

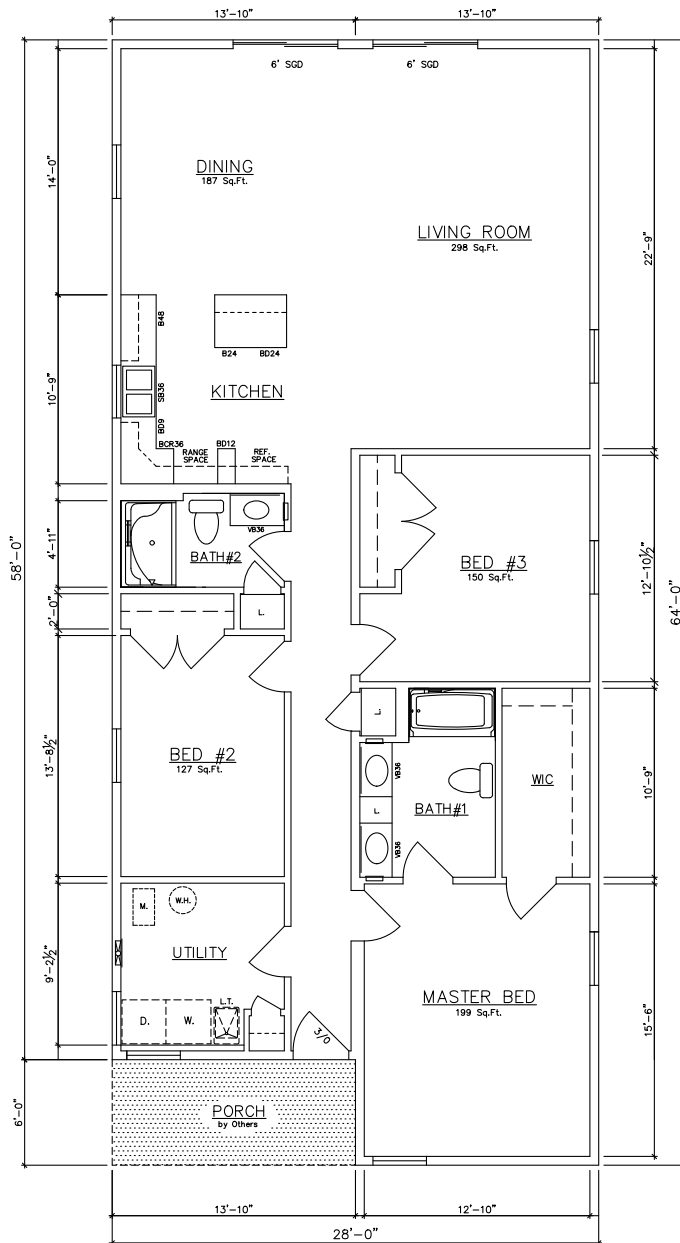


**30' WIDE OPTION**

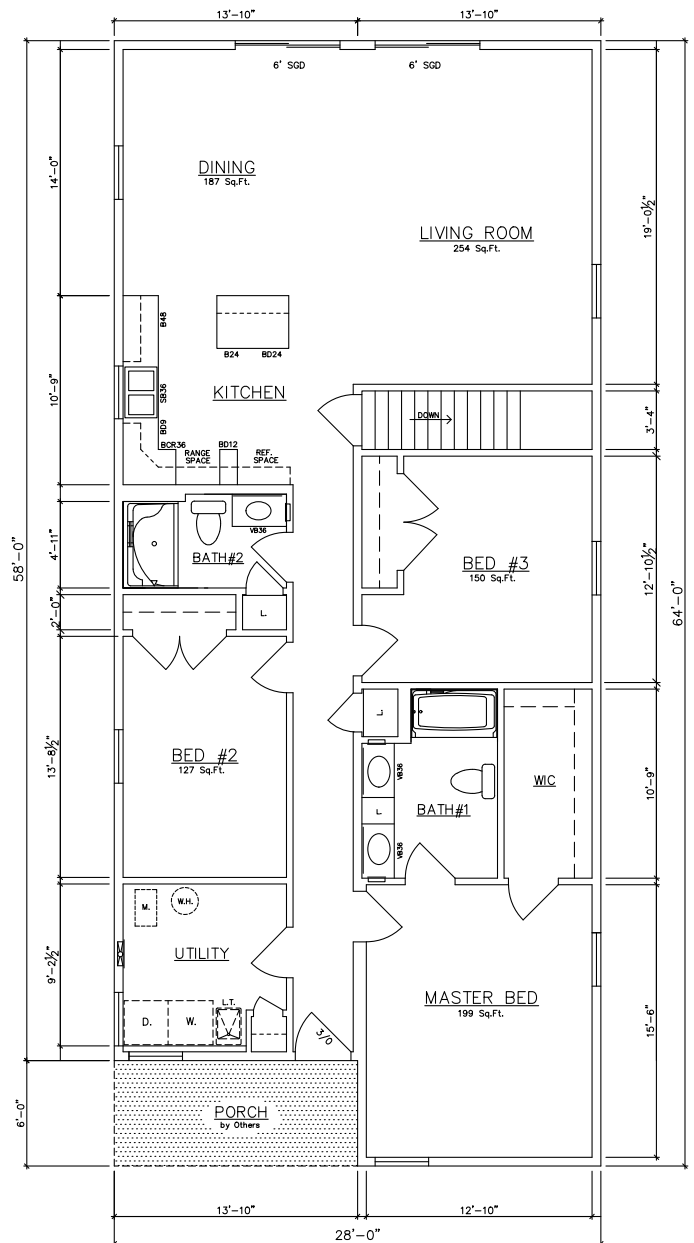
Ann Arbor II - 10728 (Crawlspace)  
1,470 sq. ft.

Ann Arbor II - 10730 (Basement)  
1,470 sq. ft.

# Ann Arbor III 58' / 64' Models

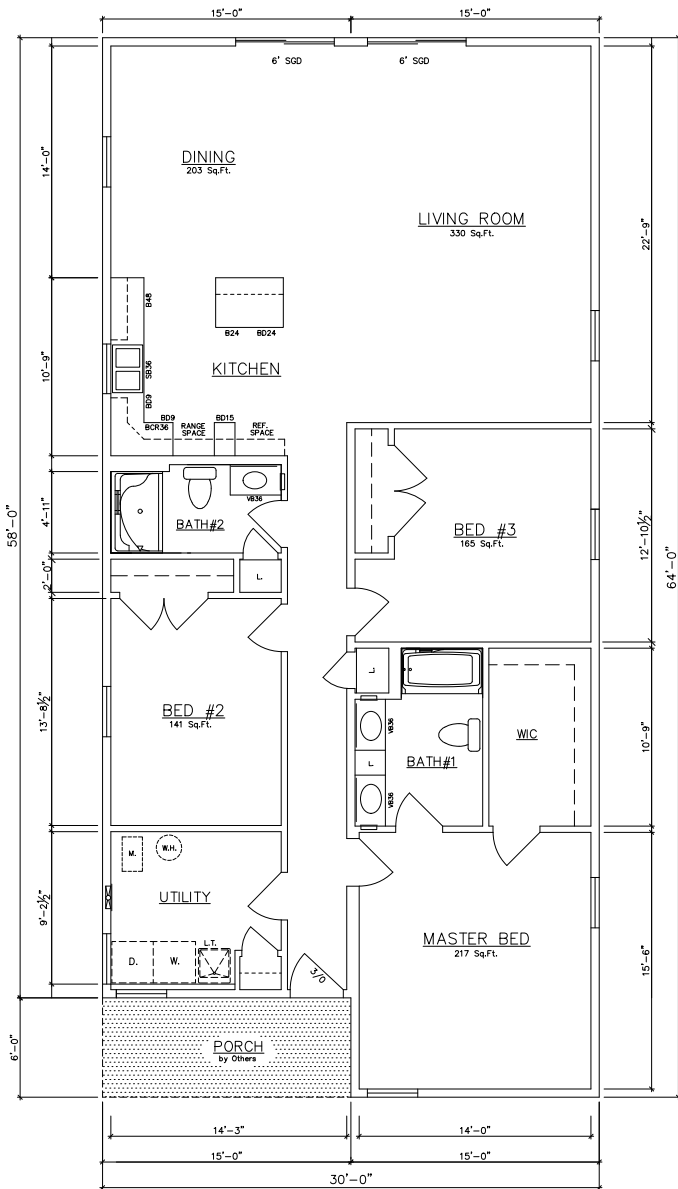


Ann Arbor III - 10736 (Crawlspace)  
1,708 sq. ft.



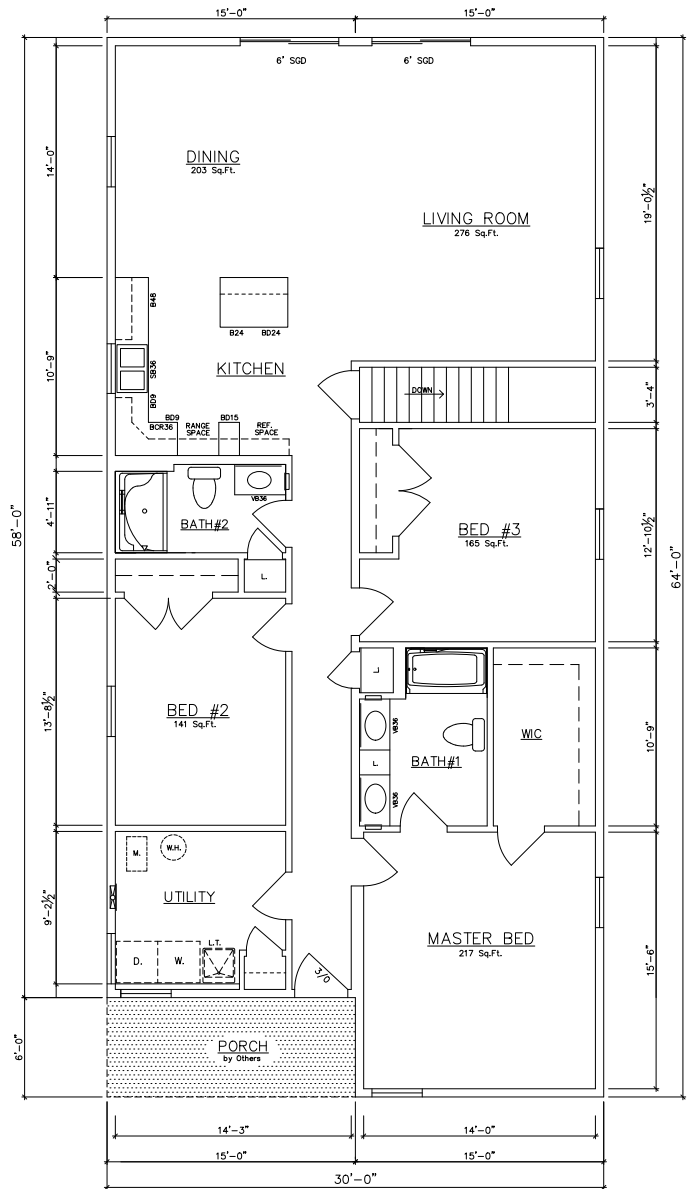
Ann Arbor III - 10738 (Basement)  
1,708 sq. ft.

# Ann Arbor III 58' / 64' Models



**30' WIDE OPTION**

Ann Arbor III - 10736 (Crawlspace)  
1,830 sq. ft.

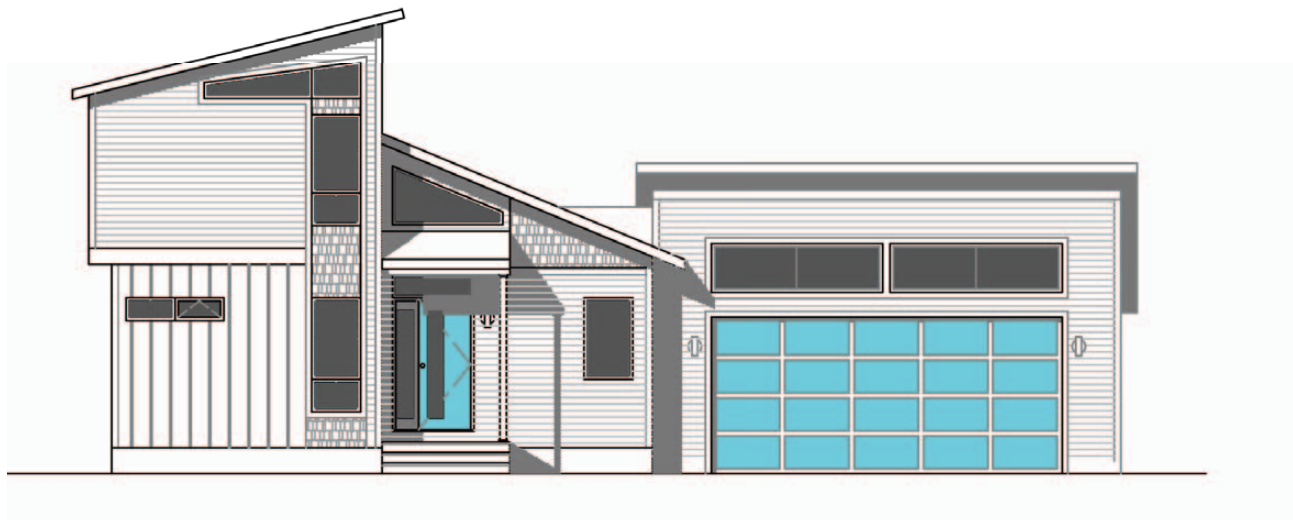
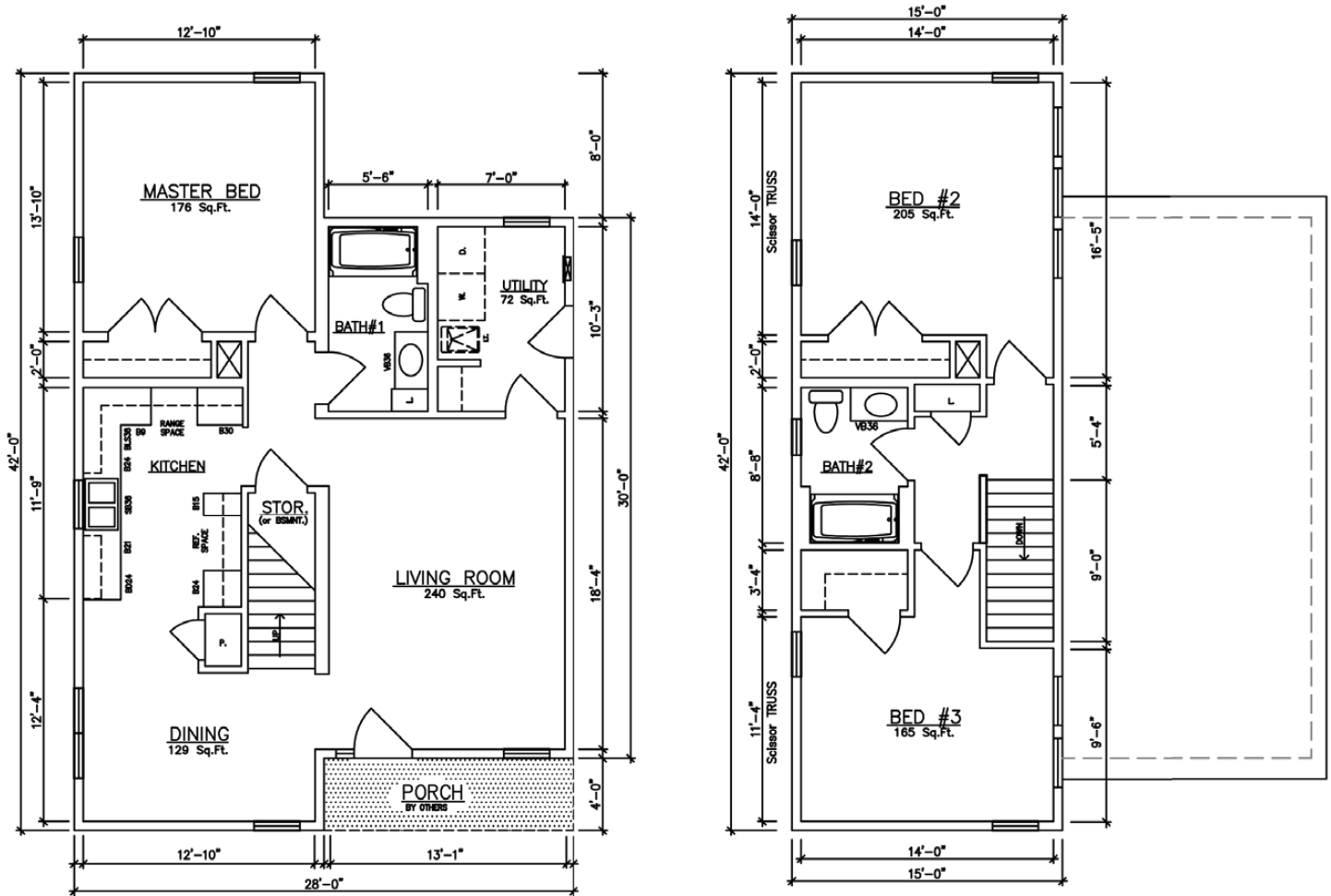


**30' WIDE OPTION**

Ann Arbor III - 10738 (Basement)  
1,830 sq. ft.

# Birch Arbor 42' Model

1,638 sq. ft. Total

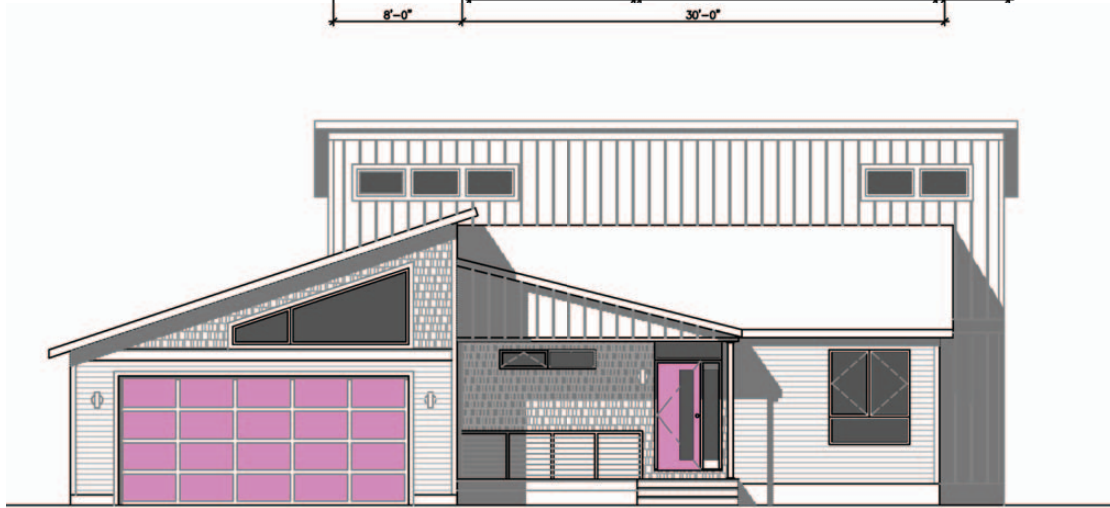
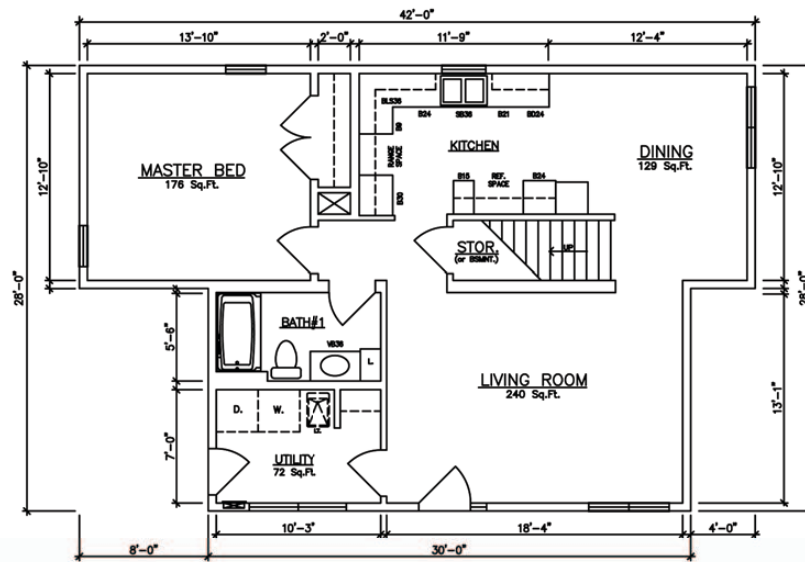
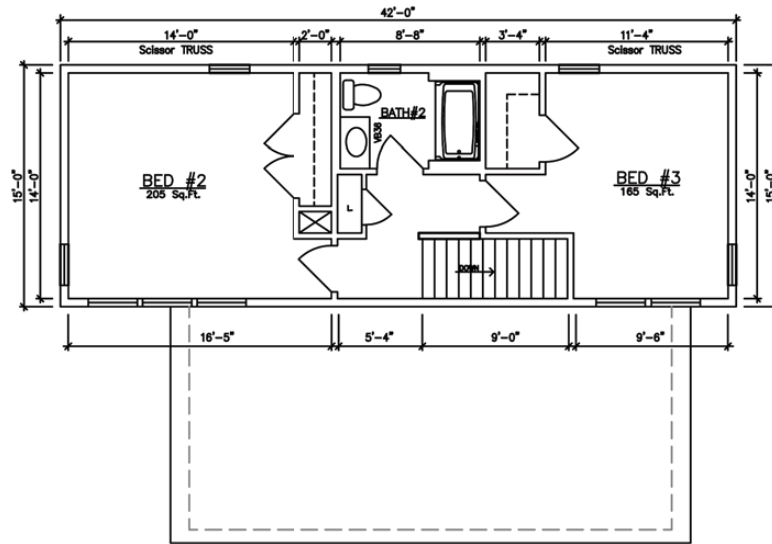


10770 (Crawlspace), 10772 (Basement)



# Birch Arbor II 42' Models

1,638 sq. ft. Total



10782 (Crawlspace), 10784 (Basement)



## General Housing Corporation

*Custom Crafted Construction*

### General Housing Corporation

4650 E. Wilder Road  
Bay City, MI 48706

Phone (800) 351-3664

(989) 684-8078

Fax (989) 684-2914

[www.genhouse.com](http://www.genhouse.com)